

# SURFACE INDUSTRIAL DOME

LL-PRB-SM-1815

18x15

## Finish

<b>Profile Colour</b>	<p>Clear Silver (Anodised) - stocked</p> <p>White (Painted) - indent*</p> <p>Black (Anodised) - indent*</p> <p>Custom Powder Coating - indent*</p>
<b>End Cap Colour</b>	<p>White - indent*</p> <p>Grey - stocked</p> <p>Black - indent*</p> <p>Silver - indent*</p>

## Light Transmission

<b>Lens (Cover)</b>	<p>Clear (100% light transmission) - indent*</p> <p>Opal (40~30% light transmission) - stocked</p> <p>Diffused (80~70% light transmission) - indent*</p> <p>Black - indent*</p>
---------------------	---

## Material

<b>Profile</b>	<p>Aluminium: 6063-T5</p> <p>Anodised Thickness: 10µm</p>
<b>Cover</b>	Polycarbonate (fire rating: V2) UV Resistant
<b>End Caps</b>	Polycarbonate (fire rating: V2) UV Resistant
<b>Pendant Kit</b>	Stainless Steel

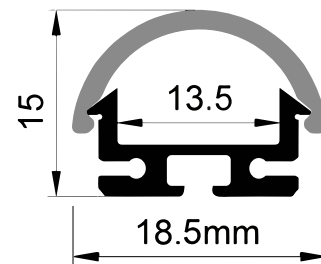
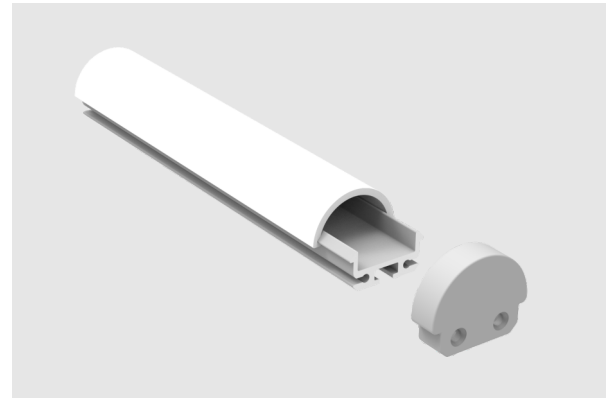
## Dimensions

<b>Width (overall)</b>	18.5 mm
<b>Height (overall)</b>	15.0 mm
<b>Max LED tape width</b>	13.0 mm
<b>Length</b>	3.0 m

## Accessories

<b>Suspension Kit</b>	None
<b>End Caps</b>	Blank & cable entry hole
<b>Mounting Clips</b>	Stainless Steel

\* Indent items are available but may incur minimum order quantities and long lead times. Please contact us.



## ALUMINIUM FINISH



## COVER TYPES

