

SURFACE

MEDIUM / SHALLOW

LL-PR-SM-1709

17x9

Finish

Profile Colour	<u>Clear Silver (Anodised) - stocked</u> <u>White (Painted) - stocked</u> <u>Black (Anodised) - stocked</u> <u>Custom Powder Coating - indent*</u>
End Cap Colour	<u>White - stocked</u> <u>Grey - indent*</u> <u>Black - stocked</u> <u>Silver - stocked</u>

Light Transmission

Lens (Cover)	<u>Clear (100% light transmission) - stocked</u> <u>Opal (40~30% light transmission) - stocked</u> <u>Diffused (80~70% light transmission) - stocked</u> <u>Black - stocked</u>
---------------------	------------------------------------------------------------------------------------------------------------------------------------------------------------------------------------------

Material

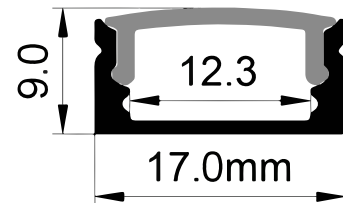
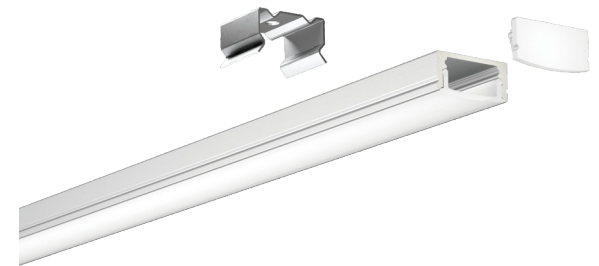
Profile	Aluminium: 6063-T5 Anodised Thickness: 10µm
Cover	Polycarbonate (fire rating: V2) UV Resistant
End Caps	Polycarbonate (fire rating: V2) UV Resistant
Pendant Kit	Stainless Steel

Dimensions

Width (overall)	17.0 mm
Height (overall)	9.0 mm
Max LED tape width	12.0 mm
Length	3.0 m

Accessories

Suspension Kit	None
End Caps	Blank & cable entry hole
Mounting Clips	Stainless Steel



* Indent items +A5:C39 are available but may incur minimum order quantities and long lead times. Please contact us.

ALUMINIUM FINISH



ANODISED CLEAR SILVER

PAINTED WHITE

ANODISED BLACK

COVER TYPES



CLEAR

DIFFUSED

OPAQUE

BLACK

CONTINUOUS