



## Type

<b>Mounting</b>	Hanging
<b>Lens (Cover)</b>	Opal (40~30% light transmission) Diffused (80~70% light transmission) - stocked Black
<b>Profile Colour</b>	Clear Silver (Anodised) - optional* Black (Anodised) - stocked White (Painted) - Stocked Custom Powder Coating - optional*
<b>End Cap Colour</b>	White - stocked Grey - optional* Black - stocked Silver - optional*

## Material

<b>Profile</b>	Aluminium: 6063-T5 Anodised Thickness: 10µm
<b>Cover</b>	Polycarbonate (fire rating: V2) UV Resistant
<b>End Caps</b>	Polycarbonate (fire rating: V2) UV Resistant
<b>Pendant Kit</b>	Stainless Steel

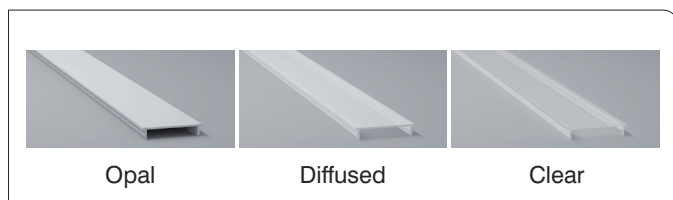
## Dimensions

<b>Width (outer)</b>	54.0 mm
<b>Height (outer)</b>	70.0 mm
<b>Width (inner)</b>	45.0 mm
<b>Length</b>	2 m
<b>Max LED tape width</b>	42.0 mm

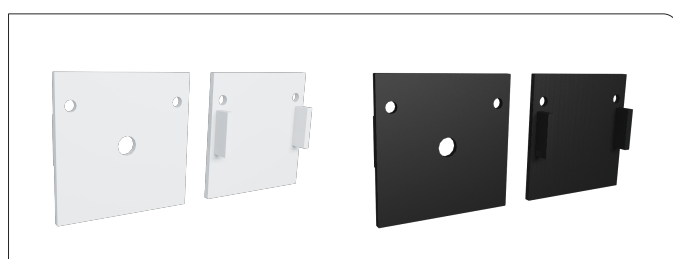
## Accessories

<b>Pendant Kit</b>	Hanging Wire Kit
<b>End Caps</b>	3 pairs (3x with cable entry, 3x blank)

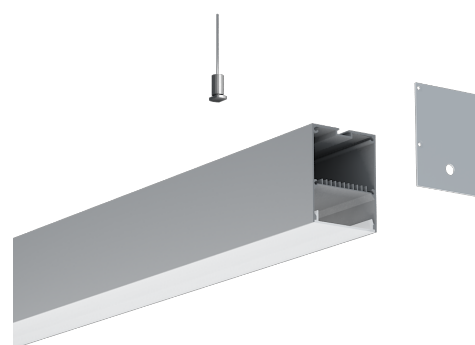
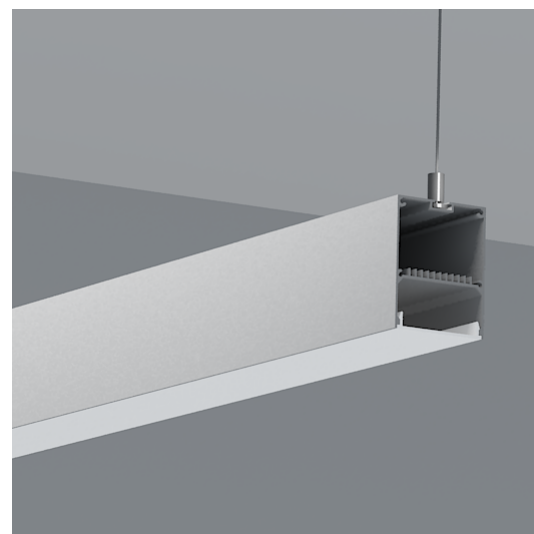
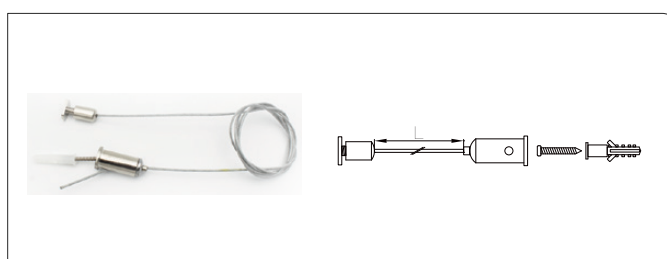
## Lens Types



## End Cap



## Mounting Clip



## Profile Dimensions

