

12-48VDC Input 18A Startup Smoother for LED Strips

■ Features

- Supply Voltage: 12-48Vdc
- 5 Year Warranty
- Smooth Startup Time Selection by Dip Switch
- Short Circuit Protection
- Only Working with Upowertek CV Driver to Insure Protection

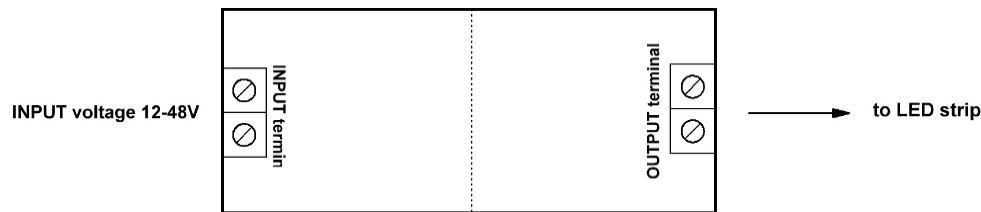


■ Application

- Strips, Light boxes and Signage

■ Model List

Model Number	Input Voltage Range	Max. Output Current/Channel	Output
DSM-18A-NNE	12-48Vdc	18A	1kHz PWM



Dip Switch Status	A	B	Startup Time
1	Off	Off	0.5s
2	Off	On	1s
3	On	Off	2s
4	On	On	3s

■ Technical Data

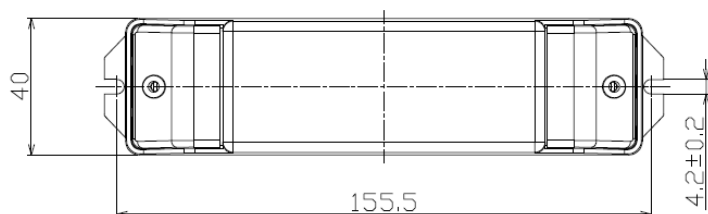
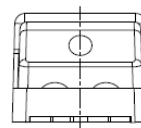
Input Voltage	12-48Vdc
Input Current	18A max.
Output Frequency	1kHz min.
Over Temperature	Shutdown the output when $T_c \geq 90 \pm 5^\circ\text{C}$; Auto recovery when $T_c \leq 40 \pm 5^\circ\text{C}$
Operating Temperature	Case Temperature $T_c = -40^\circ\text{C} \sim +80^\circ\text{C}$; 10%RH \sim 100%RH
Storage Temperature	$-40^\circ\text{C} \sim +85^\circ\text{C}$; 5%RH \sim 100%RH
MTBF	$\geq 990,000$ hours, 75°C case temperature (MIL-HDBK-217F)
Lifetime	$\geq 100,000$ hours
Case Temperature	80°C max, marked in the T_c point of label
Dimensions	6.45x1.57x1.18 inch
	164.0x40.0x30.0 mm
Net Weight	100g
Packing	-

Notes: Unless specified, all the test results are measured in 25°C room temperature.

■ Safety/EMC Compliance

Safety Standard	Description
UL8750	Light emitting diode(LED) equipment for use in lighting products
UL1012/1310	Power units other than class 2 / Class 2 power units
IEC 61347-1	Lamp control gear Part 1: general and safety requirements
IEC 61347-2-13	Lamp control gear Part 2-13: particular requirement for d.c. or a.c. supplied electronic control gear for LED modules
EMI Standards	Description
IEC 55015	Conducted emission test & radiated emission test
IEC 61000-3-2	Harmonic current emissions; Class C
IEC 61000-3-3	Voltage fluctuations & flicker
FCC Part 15	ANSI C63.4:2009 Class B
EMS Standards	Description
IEC 61000-4-2	Electrostatic discharge (ESD): 8 kV air discharge, 4 kV contact discharge
IEC 61000-4-3	Radio frequency electromagnetic field susceptibility test (RS)
IEC 61000-4-4	Electrical fast transient (EFT)
IEC 61000-4-5	Surge immunity test
IEC 61000-4-6	Conducted radio frequency disturbances test (CS)
IEC 61000-4-8	Power frequency magnetic field test
IEC 61000-4-11	Voltage dips
IEC 61547	Electromagnetic immunity requirements applies to lighting equipment

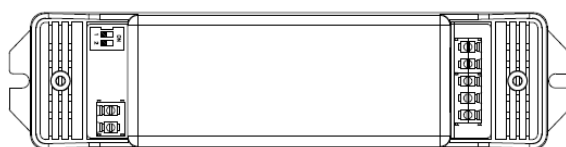
■ Mechanical Design



Unspecified tolerance :±1

INPUT

V+
V-



OUTPUT

V+
V1-/RED
V2-/GREEN