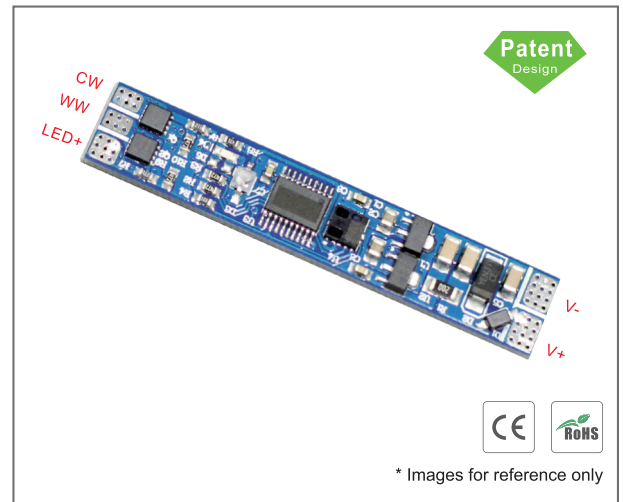


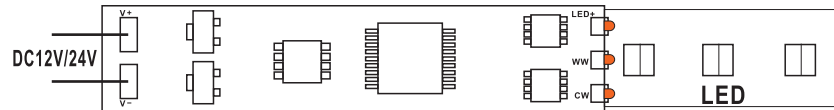
In-Profile Hand Wave Dual Colour Switch & Dimmer

Functions:

- Turn ON/OFF the light when hand pass over the sensor within 18cm.
- Input Voltage 12V-24VDC.
- Current: 4A max each channel.
- Detection Range: $\leq 18\text{cm}$ (when there's no PC cover).
- Hold the hand over the sensor switch within 18cm more than 1 second, adjusting the double color led light brightness of one led color from 0% to 100% and of another led color from 100% to 0%; only the led color temperature is adjustable, the yellow led on the switch is flashing at the same time.
- Hold the hand over the sensor switch within 18cm more than 1 second, adjusting the brightness from 3% to 100% , only the led brightness is adjustable, the blue led on the switch is flashing at the same time.
- Switch dimming mode when hand pass over the sensor Round trip twice in 1.5 seconds.
- With 0V memory function.
- Dimension: 55*10mm.



Connections:

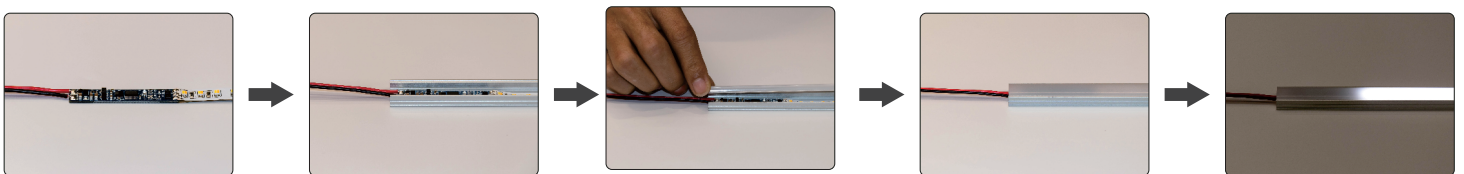


Operations:

The Proximity Switch(motion sensor) is designed to be used in LED Aluminum profile. It is dedicated for switching LED lights "on" and "off" without touching the switch. The Proximity switch operates based on an active reflective photocell. The cyclical device sends a string of infrared impulses and measures the strength of the reflected signal. When a hand is close to the sensor the infrared impulses reflect from the hand and bounce back to the sensor. If the strength of the signal is maintained on the appropriate level, the output of the sensor will reverse its state. The infrared light is emitted on a definite frequency as a result. The sensor is resistant to signals coming from other sources such as infrared remote controls, lamps or sunlight.

***Caution: avoid being exposed to the other lamp or strong light outside the lamp.**

Installation Steps:



Notice: The distance from PC cover to the profile $7\text{mm} \leq D \leq 50\text{mm}$.

