



**Type**

<b>Mounting</b>	Surface
<b>Lens (Cover)</b>	Opal (40~30% light transmission) - stocked Diffused (80~70% light transmission) - optional* Clear (95~85% light transmission) - optional*
<b>Profile Colour</b>	Oxidised Silver - stocked Custom Powder Coating - optional*
<b>End Cap Colour</b>	White - stocked Grey - optional* Black - optional* Silver - optional*

**Material**

<b>Profile</b>	Aluminium: 6063-T5 Anodised Thickness: 10µm
<b>Cover</b>	Polycarbonate (fire rating: V2) UV Resistant
<b>End Caps</b>	Polycarbonate (fire rating: V2) UV Resistant
<b>Mounting Brackets</b>	Stainless Steel

**Dimensions**

<b>Width (outer)</b>	23.0 mm
<b>Height (outer)</b>	23.0 mm
<b>Width (inner)</b>	20.5 mm
<b>Length</b>	3 m
<b>Max LED tape width</b>	20.0 mm

**Accessories**

<b>Mounting Clips</b>	6 each
<b>End Caps</b>	3 pairs (3x with cable entry, 3x blank)

**Lens Types**

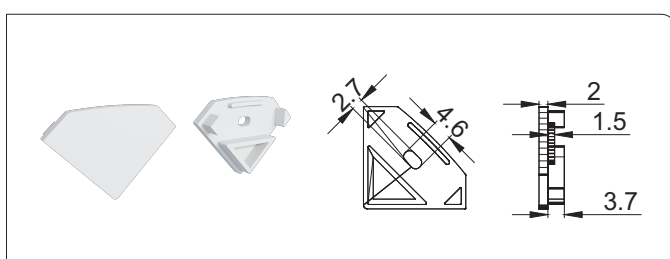


Opal

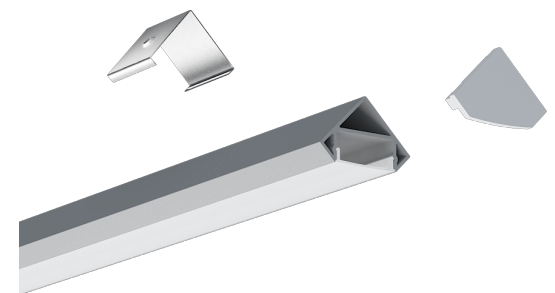
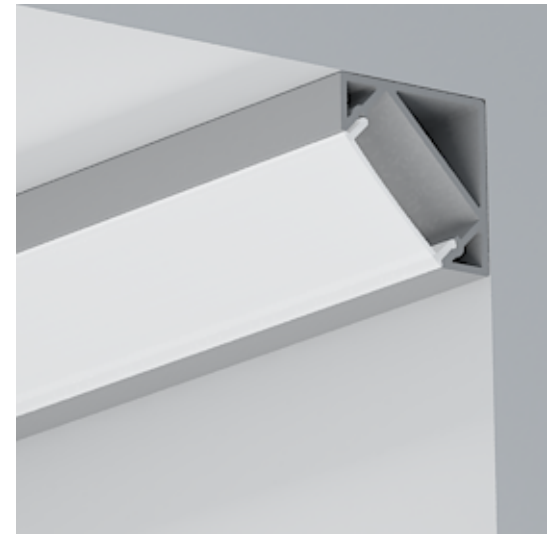
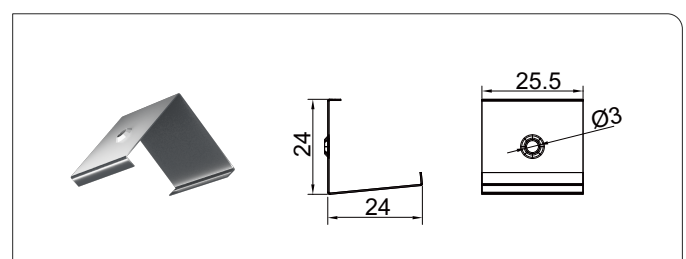
Diffused

Clear

**End Cap**



**Mounting Clip**



**Profile Dimensions**

