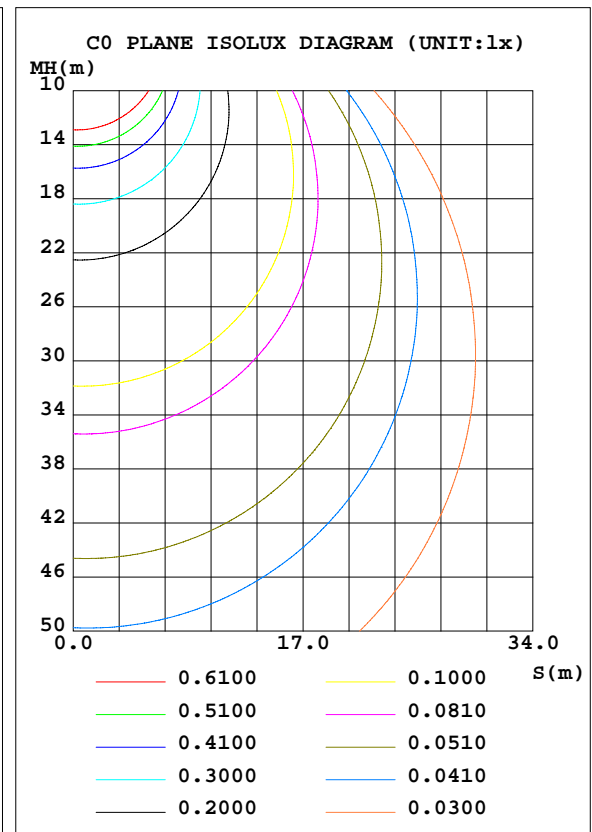
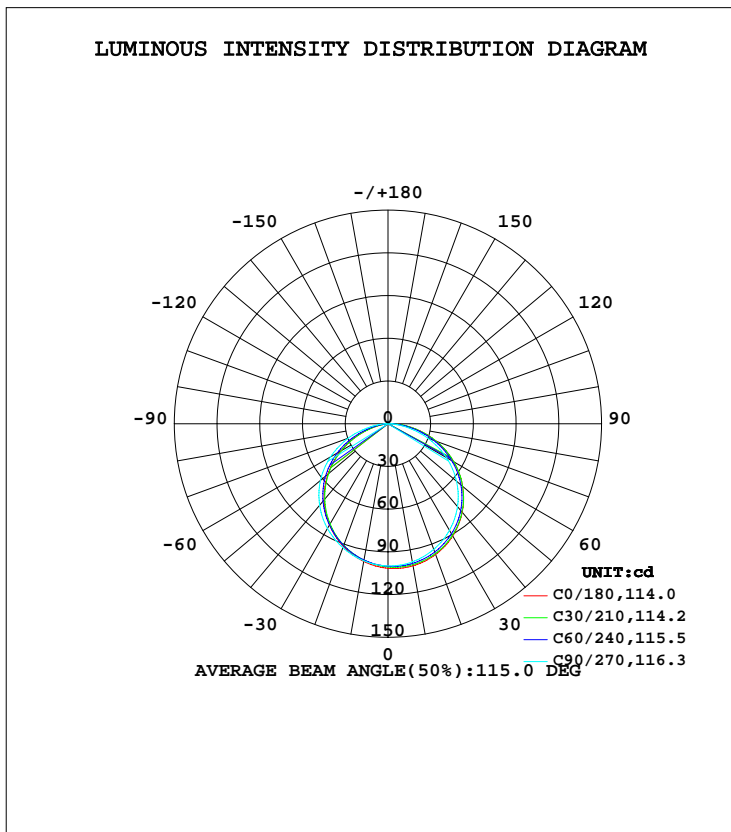


LUMINAIRE PHOTOMETRIC TEST REPORT

Test:U:12.00V I:0.3817A P:4.581W PF:1.0000 Lamp Flux:300.553x1 lm		
NAME: LED Strip	TYPE:Indoor lighting	WEIGHT:35g
SPEC.:3528 60LED WW	DIM.: 1000*10*1MM	SERIAL No.:2015072902
MFR.:	SUR.:1000*10mm	Shielding Angle:

DATA OF LAMP		PHOTOMETRIC DATA Eff: 65.46 lm/W			
MODEL	35WW060B-12(WCP)-10-HR	Imax(cd)	101.8	S/MH(C0/180)	1.21
NOMINAL POWER(W)	4.8	LOR(%)	99.8	S/MH(C90/270)	1.27
RATED VOLTAGE(V)	DC 12	TOTAL FLUX(lm)	299.86	η UP, DN(C0-180)	0.7,49.5
NOMINAL FLUX(lm)	300.553	CIE CLASS	DIRECT	η UP, DN(C180-360)	0.7,48.8
LAMPS INSIDE	1	η up(%)	1.5	CIBSE SHR NOM	1.25
TEST VOLTAGE(V)	12	η down(%)	98.3	CIBSE SHR MAX	1.35



C Range: 0 - 360DEG
 C Interval: 5.0DEG
 Test Speed: HIGH
 Temperature:25.3DEG
 Operators:DAMIN
 Test Date:2015-07-29

γ Range: 0 - 180DEG
 γ Interval: 1.0DEG
 Test System:EVERFINE GO-2000B_V1 SYSTEM V2.0.351
 Humidity:65.0%
 Test Distance:4.950m [K=1.0000]
 Remarks:

ZONAL FLUX DIAGRAM

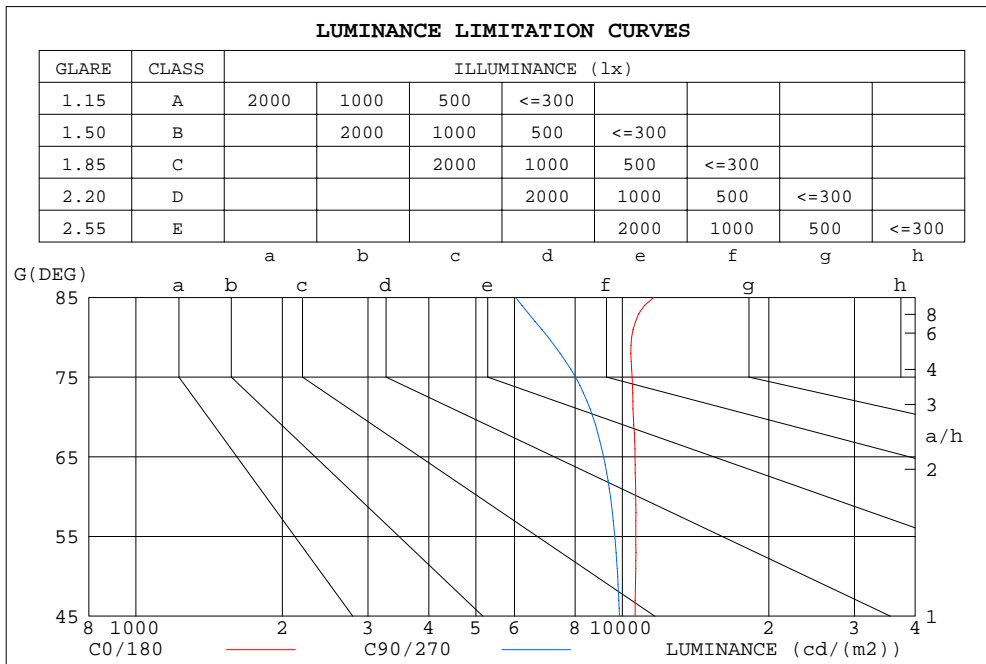
ZONAL FLUX DIAGRAM:

γ	C0	C45	C90	C135	C180	C225	C270	C315	γ	Φ zone	Φ total	Φ lum, lamp
10	101.3	100.2	98.51	98.03	98.21	97.20	97.77	100.1	0- 10	9.507	9.507	3.17,3.16
20	97.76	96.79	93.95	91.95	91.66	90.76	92.61	96.22	10- 20	27.29	36.79	12.3,12.2
30	90.99	90.19	86.39	82.75	82.08	81.28	84.97	89.43	20- 30	41.59	78.38	26.1,26.1
40	81.11	80.56	75.97	70.81	69.77	69.24	74.74	79.88	30- 40	50.61	129.0	43,42.9
50	68.46	68.11	62.87	56.39	55.06	55.06	61.93	67.63	40- 50	53.10	182.1	60.7,60.6
60	53.26	53.03	47.27	39.61	38.25	38.84	46.61	52.73	50- 60	48.50	230.6	76.9,76.7
70	36.03	35.83	29.75	21.67	20.50	21.42	29.76	35.81	60- 70	37.15	267.7	89.3,89.1
80	18.15	17.78	12.23	6.051	5.408	6.089	12.22	17.61	70- 80	21.20	288.9	96.4,96.1
90	3.825	3.538	0.6279	0.4986	0.3762	0.5224	0.6688	3.681	80- 90	6.568	295.5	98.5,98.3
100	0.3133	0.4080	0.3442	0.4103	0.4434	0.4411	0.3539	0.4444	90-100	0.7946	296.3	98.8,98.6
110	0.3697	0.4093	0.4453	0.5052	0.5447	0.5732	0.4765	0.4390	100-110	0.4516	296.7	99,98.7
120	0.4943	0.5169	0.5721	0.6246	0.6491	0.6734	0.6097	0.5572	110-120	0.5280	297.3	99.1,98.9
130	0.6179	0.6321	0.6989	0.7546	0.7663	0.7821	0.7365	0.6649	120-130	0.5805	297.9	99.3,99.1
140	0.7415	0.7610	0.8247	0.8686	0.8772	0.8812	0.8548	0.7811	130-140	0.5914	298.4	99.5,99.3
150	0.8663	0.8835	0.9419	0.9677	0.9763	0.9718	0.9614	0.8962	140-150	0.5507	299.0	99.7,99.5
160	0.9878	0.9997	1.040	1.060	1.067	1.055	1.059	0.9974	150-160	0.4545	299.4	99.9,99.6
170	1.108	1.101	1.119	1.146	1.154	1.133	1.138	1.099	160-170	0.3048	299.8	100,99.7
180	1.187	1.171	1.169	1.179	1.187	1.171	1.170	1.181	170-180	0.1094	299.9	100,99.8
DEG	LUMINOUS INTENSITY:cd									UNIT:lm		

C Range: 0 - 360DEG
C Interval: 5.0DEG
Test Speed: HIGH
Temperature:25.3DEG
Operators:DAMIN
Test Date:2015-07-29

γ Range: 0 - 180DEG
 γ Interval: 1.0DEG
Test System:EVERFINE GO-2000B_V1 SYSTEM V2.0.351
Humidity:65.0%
Test Distance:4.950m [K=1.0000]
Remarks:

LUMINANCE LIMITATION CURVES



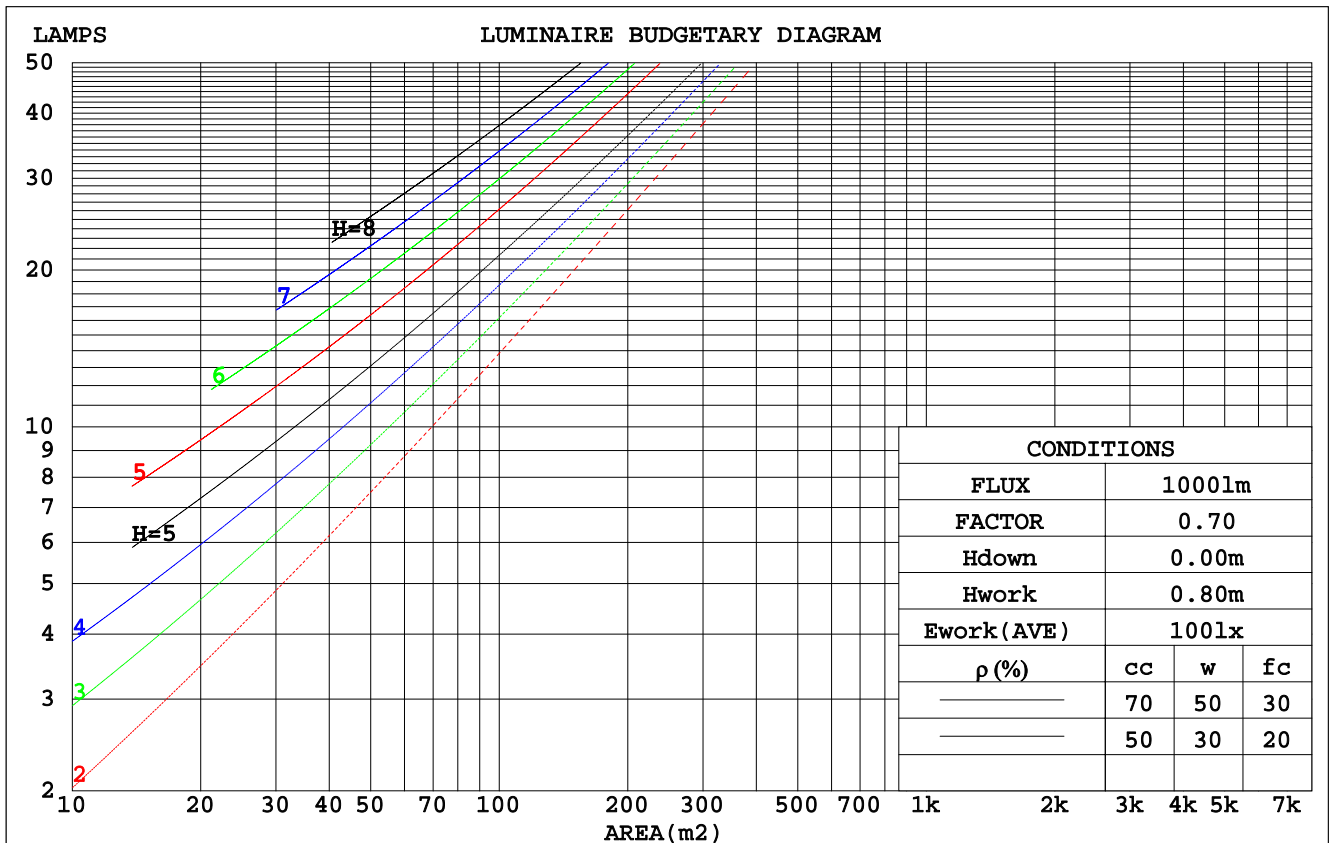
LUMINANCE cd/(m2)		
G (DEG)	C0/180	C90/270
85	11610	6034
80	10453	7044
75	10473	8007
70	10535	8700
65	10622	9150
60	10653	9453
55	10656	9649
50	10650	9781
45	10625	9863

C Range: 0 - 360DEG
 C Interval: 5.0DEG
 Test Speed: HIGH
 Temperature: 25.3DEG
 Operators: DAMIN
 Test Date: 2015-07-29

γ Range: 0 - 180DEG
 γ Interval: 1.0DEG
 Test System: EVERFINE GO-2000B_V1 SYSTEM V2.0.351
 Humidity: 65.0%
 Test Distance: 4.950m [K=1.0000]
 Remarks:

CU AND LUMINAIRE BUDGETARY ESTIMATE DIAGRAM

ρ_{cc}	80%			70%			50%			30%			10%			0
ρ_w	50%	30%	10%	50%	30%	10%	50%	30%	10%	50%	30%	10%	50%	30%	10%	0
ρ_{fc}	20%			20%			20%			20%			20%			0
RCR	RCR:Room Cavity Ratio						Coefficients of Utilization(CU)									
0.0	1.18	1.18	1.18	1.16	1.16	1.16	1.10	1.10	1.10	1.05	1.05	1.05	1.00	1.00	1.00	.98
1.0	1.03	.99	.95	1.01	.97	.93	.96	.93	.90	.92	.89	.87	.88	.86	.84	.82
2.0	.90	.83	.77	.88	.81	.76	.84	.78	.74	.80	.76	.72	.77	.73	.70	.68
3.0	.78	.70	.64	.77	.69	.63	.74	.67	.62	.71	.65	.60	.68	.63	.59	.57
4.0	.69	.61	.54	.68	.60	.53	.65	.58	.52	.63	.57	.51	.60	.55	.51	.48
5.0	.62	.53	.46	.61	.52	.46	.58	.51	.45	.56	.50	.45	.54	.49	.44	.42
6.0	.56	.47	.40	.55	.46	.40	.53	.45	.39	.51	.44	.39	.49	.43	.39	.36
7.0	.50	.42	.35	.50	.41	.35	.48	.40	.35	.46	.40	.34	.45	.39	.34	.32
8.0	.46	.37	.31	.45	.37	.31	.44	.36	.31	.42	.36	.31	.41	.35	.31	.29
9.0	.42	.34	.28	.41	.34	.28	.40	.33	.28	.39	.32	.28	.38	.32	.27	.26
10.0	.39	.31	.26	.38	.31	.26	.37	.30	.25	.36	.30	.25	.35	.29	.25	.23



C Range: 0 - 360DEG
 C Interval: 5.0DEG
 Test Speed: HIGH
 Temperature: 25.3DEG
 Operators: DAMIN
 Test Date: 2015-07-29

γ Range: 0 - 180DEG
 γ Interval: 1.0DEG
 Test System: EVERFINE GO-2000B_V1 SYSTEM V2.0.351
 Humidity: 65.0%
 Test Distance: 4.950m [K=1.0000]
 Remarks:

WEC AND CCEC

ρ_{cc}	80%			70%			50%			30%			10%			0
ρ_w	50%	30%	10%	50%	30%	10%	50%	30%	10%	50%	30%	10%	50%	30%	10%	0
ρ_{fc}	20%			20%			20%			20%			20%			0
RCR	RCR:Room Cavity Ratio						Wall Exitance Coefficients(WEC)									
0.0																
1.0	.314	.178	.057	.306	.175	.056	.292	.168	.054	.279	.161	.052	.267	.155	.050	
2.0	.294	.161	.049	.287	.158	.049	.275	.153	.047	.263	.148	.046	.253	.143	.045	
3.0	.272	.145	.043	.266	.142	.043	.255	.138	.042	.244	.134	.041	.235	.130	.040	
4.0	.250	.130	.038	.245	.128	.038	.235	.125	.037	.226	.121	.037	.218	.118	.036	
5.0	.231	.118	.034	.226	.116	.034	.218	.113	.033	.210	.111	.033	.202	.108	.032	
6.0	.214	.107	.031	.210	.106	.031	.202	.104	.030	.195	.101	.030	.188	.099	.029	
7.0	.199	.098	.028	.196	.097	.028	.188	.095	.027	.182	.093	.027	.176	.091	.027	
8.0	.186	.091	.026	.183	.090	.025	.176	.088	.025	.170	.086	.025	.165	.085	.025	
9.0	.174	.084	.024	.171	.083	.023	.166	.082	.023	.160	.080	.023	.155	.079	.023	
10.0	.164	.078	.022	.161	.078	.022	.156	.076	.022	.151	.075	.021	.146	.074	.021	

ρ_{cc}	80%			70%			50%			30%			10%			0
ρ_w	50%	30%	10%	50%	30%	10%	50%	30%	10%	50%	30%	10%	50%	30%	10%	0
ρ_{fc}	20%			20%			20%			20%			20%			0
RCR	RCR:Room Cavity Ratio						Ceiling Cavity Exitance Coefficients(CCEC)									
0.0	.201	.201	.201	.172	.172	.172	.117	.117	.117	.067	.067	.067	.022	.022	.022	
1.0	.191	.167	.145	.164	.143	.125	.112	.099	.086	.064	.057	.050	.021	.018	.016	
2.0	.183	.143	.109	.157	.123	.094	.108	.085	.066	.062	.049	.038	.020	.016	.013	
3.0	.176	.125	.085	.151	.108	.074	.103	.075	.052	.060	.044	.031	.019	.014	.010	
4.0	.168	.112	.069	.144	.097	.060	.099	.068	.042	.057	.040	.025	.018	.013	.008	
5.0	.161	.102	.058	.138	.088	.051	.095	.062	.036	.055	.036	.021	.018	.012	.007	
6.0	.154	.094	.050	.132	.081	.044	.091	.057	.031	.053	.033	.018	.017	.011	.006	
7.0	.147	.087	.044	.126	.075	.039	.087	.053	.027	.051	.031	.016	.016	.010	.005	
8.0	.140	.081	.040	.121	.070	.035	.084	.049	.025	.049	.029	.015	.016	.010	.005	
9.0	.134	.076	.037	.116	.066	.032	.080	.046	.023	.047	.027	.014	.015	.009	.004	
10.0	.129	.072	.034	.111	.062	.030	.077	.044	.021	.045	.026	.013	.015	.009	.004	

C Range: 0 - 360DEG
 C Interval: 5.0DEG
 Test Speed: HIGH
 Temperature:25.3DEG
 Operators:DAMIN
 Test Date:2015-07-29

γ Range: 0 - 180DEG
 γ Interval: 1.0DEG
 Test System:EVERFINE GO-2000B_V1 SYSTEM V2.0.351
 Humidity:65.0%
 Test Distance:4.950m [K=1.0000]
 Remarks:

UGR(Unified Glare Rating) Table

ceiling/cavity	0.7	0.7	0.5	0.5	0.3	0.7	0.7	0.5	0.5	0.3
walls	0.5	0.3	0.5	0.3	0.3	0.5	0.3	0.5	0.3	0.3
working plane	0.2	0.2	0.2	0.2	0.2	0.2	0.2	0.2	0.2	0.2
Room dimensions	Viewed crosswise					Viewed endwise				
x = 2H y = 2H	21.5	23.1	21.8	23.3	23.5	21.1	22.7	21.4	22.9	23.1
3H	23.3	24.7	23.6	25.0	25.3	22.7	24.1	23.0	24.4	24.7
4H	24.1	25.4	24.4	25.7	26.0	23.3	24.7	23.7	25.0	25.2
6H	24.8	26.0	25.1	26.3	26.6	23.8	25.0	24.1	25.3	25.6
8H	25.0	26.2	25.4	26.5	26.9	23.9	25.1	24.3	25.4	25.7
12H	25.2	26.4	25.6	26.7	27.0	24.0	25.1	24.4	25.5	25.8
4H 2H	22.2	23.5	22.5	23.8	24.1	21.9	23.2	22.2	23.5	23.8
3H	24.2	25.4	24.6	25.7	26.0	23.7	24.9	24.1	25.2	25.5
4H	25.1	26.2	25.5	26.5	26.9	24.5	25.5	24.9	25.9	26.2
6H	25.9	26.9	26.3	27.2	27.6	25.0	26.0	25.5	26.4	26.8
8H	26.2	27.1	26.7	27.5	27.9	25.2	26.1	25.7	26.5	26.9
12H	26.5	27.3	27.0	27.8	28.2	25.3	26.2	25.8	26.6	27.0
8H 4H	25.4	26.3	25.9	26.7	27.1	24.9	25.8	25.3	26.2	26.6
6H	26.4	27.2	26.9	27.6	28.1	25.6	26.4	26.1	26.8	27.3
8H	26.9	27.5	27.4	28.0	28.5	25.9	26.6	26.4	27.0	27.5
12H	27.3	27.9	27.8	28.3	28.8	26.2	26.7	26.7	27.2	27.7
12H 4H	25.5	26.3	25.9	26.7	27.1	24.9	25.7	25.4	26.1	26.6
6H	26.5	27.2	27.0	27.6	28.1	25.8	26.4	26.3	26.9	27.4
8H	27.0	27.6	27.5	28.1	28.6	26.1	26.7	26.6	27.2	27.7
Variations with the observer position at spacings:										
S = 1.0H	+ 0.1 / - 0.2					+ 0.1 / - 0.2				
1.5H	+ 0.2 / - 0.3					+ 0.2 / - 0.4				
2.0H	+ 0.1 / - 0.4					+ 0.2 / - 0.5				

CIE Pub.117 Corrected 300.6 lm Total Lamp Luminous Flux.(8log(F/F0) = -4.2)

C Range: 0 - 360DEG
C Interval: 5.0DEG
Test Speed: HIGH
Temperature:25.3DEG
Operators:DAMIN
Test Date:2015-07-29

γ Range: 0 - 180DEG
 γ Interval: 1.0DEG
Test System:EVERFINE GO-2000B_V1 SYSTEM V2.0.351
Humidity:65.0%
Test Distance:4.950m [K=1.0000]
Remarks:

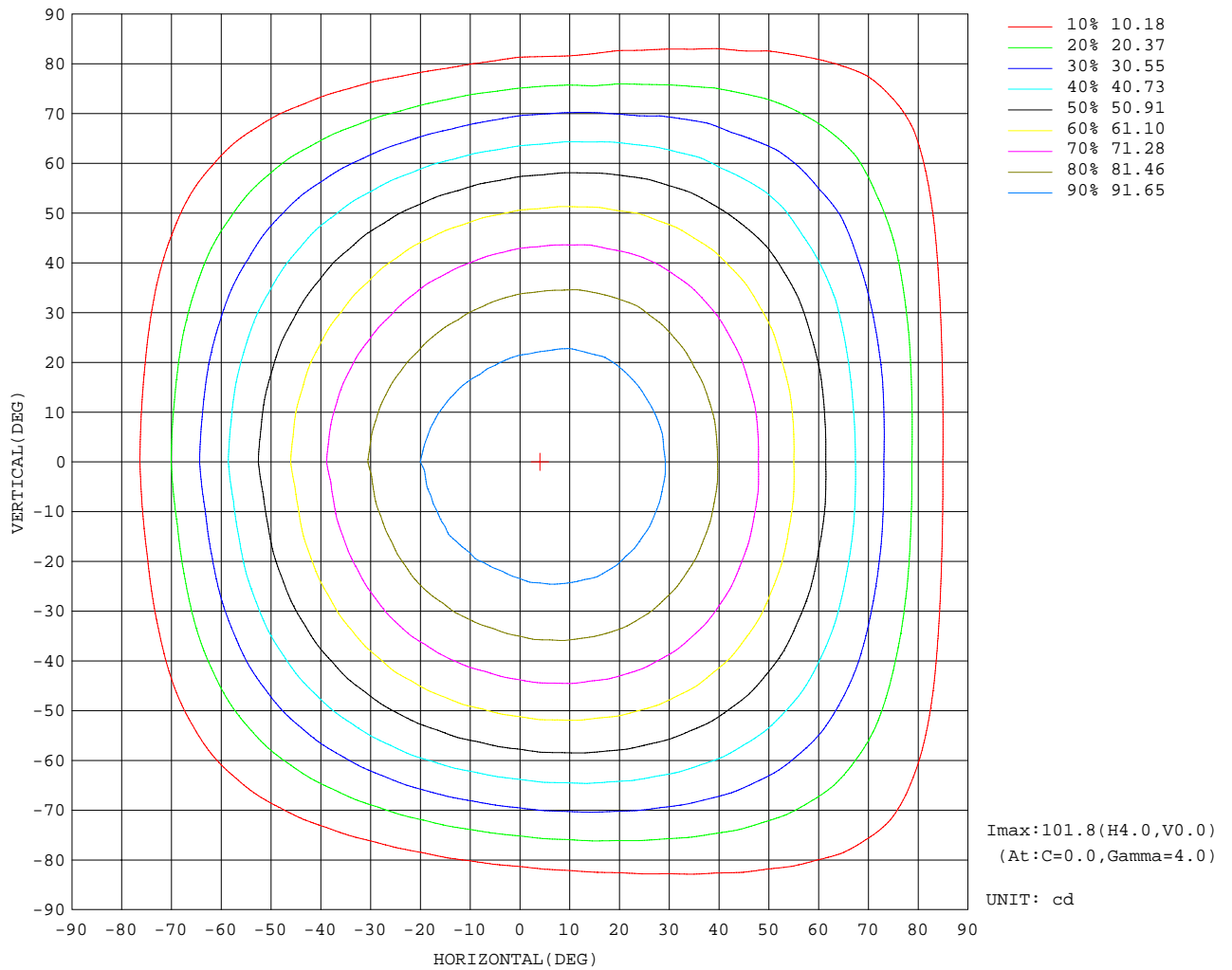
UTILIZATION FACTORS TABLE

REFLECTANCE										
Ceiling	0.8	0.8	0.8	0.7	0.7	0.7	0.5	0.5	0.5	0
Walls	0.7	0.5	0.3	0.7	0.5	0.3	0.7	0.5	0.3	0
Working plane	0.2	0.2	0.2	0.2	0.2	0.2	0.2	0.2	0.2	0
ROOM INDEX	UTILIZATION FACTORS(PERCENT) $k(RI) \times RCR = 5$									
k = 0.60	56	45	38	56	44	38	54	44	37	31
0.80	66	55	47	65	54	47	63	53	47	40
1.00	75	64	56	74	63	56	71	64	55	48
1.25	82	71	64	80	71	64	78	69	63	55
1.50	87	77	70	85	76	69	82	74	68	60
2.00	94	85	79	92	84	78	88	81	76	68
2.50	98	90	84	96	88	83	92	86	81	72
3.00	101	94	89	99	93	87	95	89	85	76
4.00	105	99	95	103	98	93	98	94	90	81
5.00	108	103	99	105	101	97	100	97	94	84
ROOM INDEX	UF(total)									Direct
According to DIN EN 13032-2 2004			Suspended				SHRNOM = 1.25			

C Range: 0 - 360DEG
 C Interval: 5.0DEG
 Test Speed: HIGH
 Temperature: 25.3DEG
 Operators: DAMIN
 Test Date: 2015-07-29

γ Range: 0 - 180DEG
 γ Interval: 1.0DEG
 Test System: EVERFINE GO-2000B_V1 SYSTEM V2.0.351
 Humidity: 65.0%
 Test Distance: 4.950m [K=1.0000]
 Remarks:

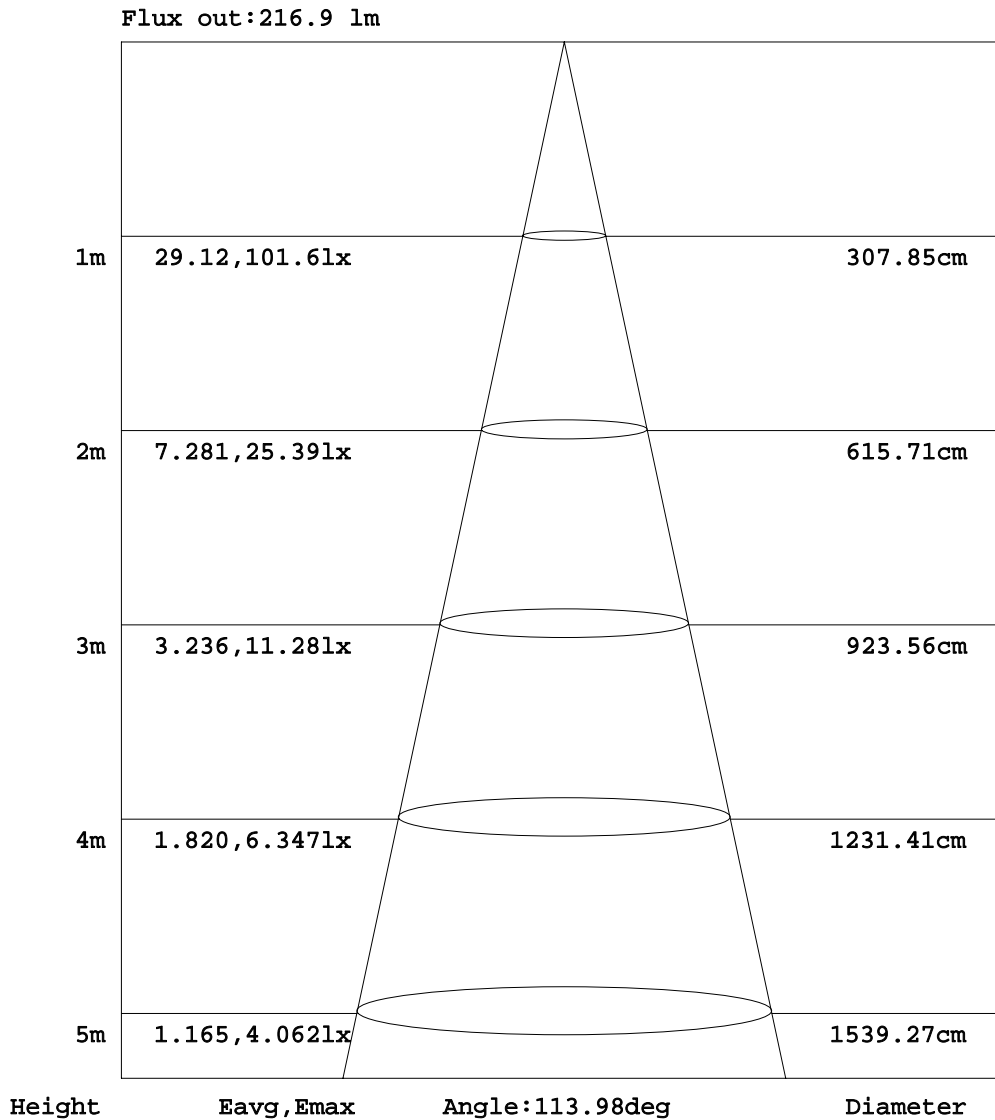
ISOCANDELA DIAGRAM



C Range: 0 - 360DEG
 C Interval: 5.0DEG
 Test Speed: HIGH
 Temperature: 25.3DEG
 Operators: DAMIN
 Test Date: 2015-07-29

γ Range: 0 - 180DEG
 γ Interval: 1.0DEG
 Test System: EVERFINE GO-2000B_V1 SYSTEM V2.0.351
 Humidity: 65.0%
 Test Distance: 4.950m [K=1.0000]
 Remarks:

AAI Figure

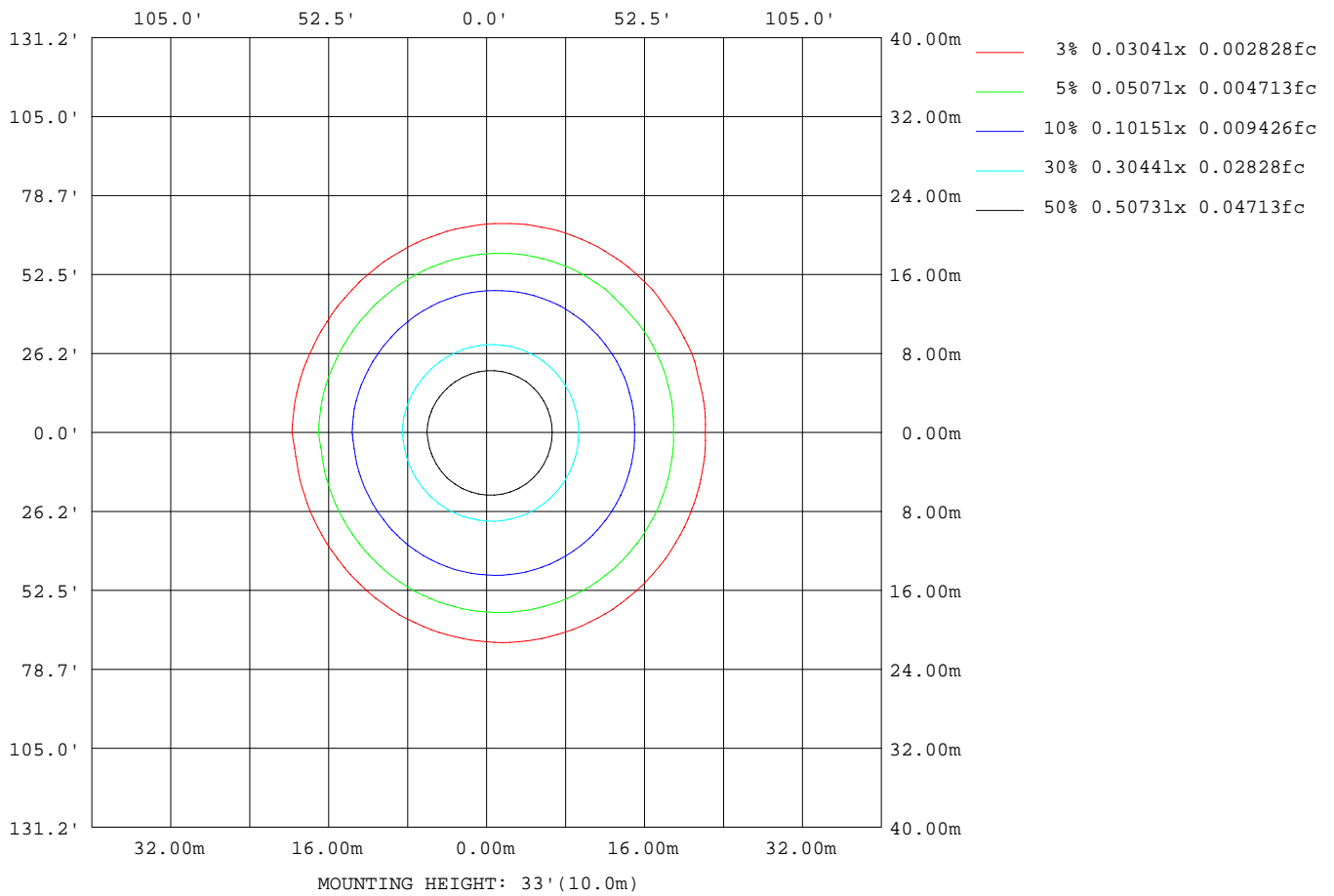


Note: The Curves indicate the illuminated area and the average illumination when the luminaire is at different distance.

C Range: 0 - 360DEG
 C Interval: 5.0DEG
 Test Speed: HIGH
 Temperature: 25.3DEG
 Operators: DAMIN
 Test Date: 2015-07-29

γ Range: 0 - 180DEG
 γ Interval: 1.0DEG
 Test System: EVERFINE GO-2000B_V1 SYSTEM V2.0.351
 Humidity: 65.0%
 Test Distance: 4.950m [K=1.0000]
 Remarks:

ISOLUX DIAGRAM



C Range: 0 - 360DEG
 C Interval: 5.0DEG
 Test Speed: HIGH
 Temperature: 25.3DEG
 Operators: DAMIN
 Test Date: 2015-07-29

γ Range: 0 - 180DEG
 γ Interval: 1.0DEG
 Test System: EVERFINE GO-2000B_V1 SYSTEM V2.0.351
 Humidity: 65.0%
 Test Distance: 4.950m [K=1.0000]
 Remarks:

LED Avg.L Report

Test:U:12.00V I:0.3817A P:4.581W PF:1.0000 Lamp Flux:300.553x1 lm		
NAME: LED Strip	TYPE:Indoor lighting	WEIGHT:35g
SPEC.:3528 60LED WW	DIM.: 1000*10*1MM	SERIAL No.:2015072902
MFR.:	SUR.:1000*10mm	Shielding Angle:

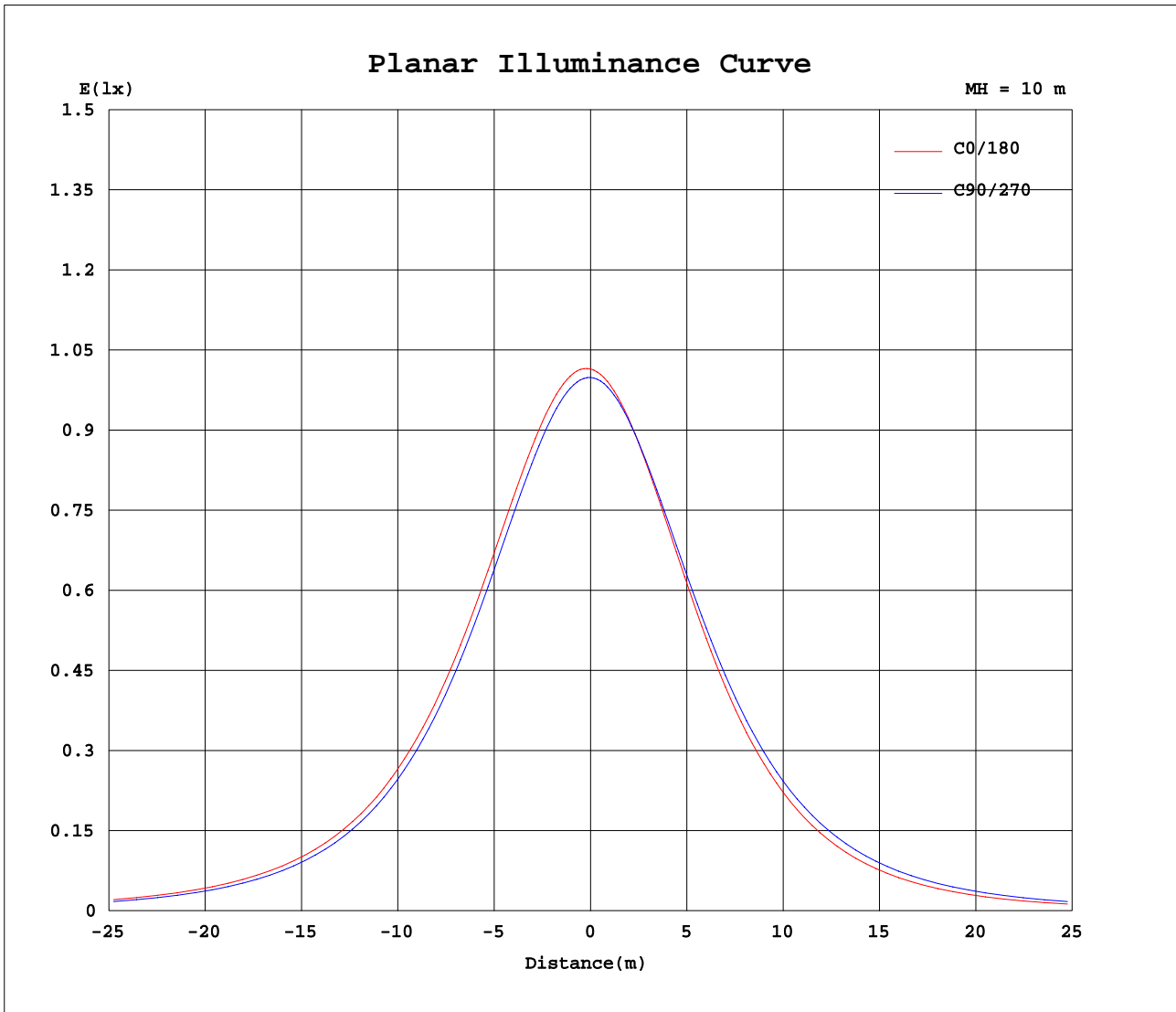
AvgL	cd/m2
L_0~180(65)av	8788
L_0~180(75)av	7595
L_0~180(85)av	6510
L_90~270(65)av	9090
L_90~270(75)av	7977
L_90~270(85)av	5940
L_45(65)av	8859
L_45(75)av	7717
L_45(85)av	6395

Standard: GB/T 29293-2012

C Range: 0 - 360DEG
C Interval: 5.0DEG
Test Speed: HIGH
Temperature:25.3DEG
Operators:DAMIN
Test Date:2015-07-29

γ Range: 0 - 180DEG
 γ Interval: 1.0DEG
Test System:EVERFINE GO-2000B_V1 SYSTEM V2.0.351
Humidity:65.0%
Test Distance:4.950m [K=1.0000]
Remarks:

Planar Illuminance Curve



C Range: 0 - 360DEG
 C Interval: 5.0DEG
 Test Speed: HIGH
 Temperature: 25.3DEG
 Operators: DAMIN
 Test Date: 2015-07-29

γ Range: 0 - 180DEG
 γ Interval: 1.0DEG
 Test System: EVERFINE GO-2000B_V1 SYSTEM V2.0.351
 Humidity: 65.0%
 Test Distance: 4.950m [K=1.0000]
 Remarks:

LUMINOUS DISTRIBUTION INTENSITY DATA

Table--1

UNIT: cd

C(DEG) γ (DEG)	0	5	10	15	20	25	30	35	40	45	50	55	60	65	70	75	80	85	90
0	101	101	101	101	101	101	101	100	100	100	100	100	100	100	100	100.0	99.9	100.0	99.9
5	102	102	101	101	101	101	101	101	101	101	101	101	100	100	100	100.0	99.9	99.8	99.6
10	101	101	101	101	101	101	101	100	100	100	100	99.9	99.6	99.4	99.3	99.1	98.9	98.8	98.5
15	99.9	99.8	99.7	99.6	99.5	99.4	99.2	99.1	98.9	98.9	98.7	98.5	98.1	97.9	97.7	97.4	97.2	97.0	96.6
20	97.8	97.7	97.5	97.5	97.3	97.3	97.1	97.0	96.8	96.8	96.5	96.4	95.9	95.6	95.3	95.1	94.7	94.4	93.9
25	94.8	94.8	94.6	94.6	94.4	94.4	94.2	94.2	93.9	93.9	93.6	93.4	92.9	92.6	92.3	91.9	91.4	91.1	90.5
30	91.0	91.1	90.9	90.9	90.8	90.8	90.5	90.5	90.2	90.2	89.9	89.7	89.2	88.8	88.4	88.0	87.5	87.1	86.4
35	86.4	86.6	86.4	86.5	86.3	86.4	86.1	86.1	85.8	85.8	85.5	85.2	84.7	84.3	83.8	83.4	82.7	82.3	81.5
40	81.1	81.3	81.2	81.2	81.1	81.1	80.9	80.9	80.6	80.6	80.2	80.0	79.5	79.1	78.4	78.0	77.3	76.8	76.0
45	75.1	75.4	75.2	75.4	75.2	75.3	75.0	75.0	74.7	74.7	74.2	74.1	73.5	73.1	72.4	72.0	71.2	70.6	69.7
50	68.5	68.8	68.6	68.8	68.6	68.7	68.4	68.5	68.1	68.1	67.6	67.5	66.9	66.6	65.7	65.3	64.4	63.9	62.9
55	61.1	61.5	61.4	61.5	61.3	61.5	61.2	61.3	60.9	60.9	60.4	60.2	59.6	59.3	58.4	57.9	57.0	56.4	55.3
60	53.3	53.7	53.5	53.7	53.5	53.7	53.4	53.4	53.1	53.0	52.5	52.3	51.6	51.3	50.5	49.9	49.0	48.4	47.3
65	44.9	45.3	45.2	45.4	45.2	45.4	45.0	45.1	44.7	44.7	44.1	43.9	43.2	42.8	41.9	41.4	40.4	39.8	38.7
70	36.0	36.4	36.4	36.6	36.4	36.5	36.2	36.2	35.9	35.8	35.2	34.9	34.2	33.8	33.0	32.4	31.5	30.9	29.8
75	27.1	27.4	27.4	27.6	27.4	27.5	27.2	27.2	26.8	26.7	26.2	25.8	25.1	24.7	23.9	23.3	22.4	21.8	20.7
80	18.2	18.6	18.4	18.7	18.5	18.6	18.3	18.3	17.8	17.8	17.2	16.9	16.2	15.8	15.0	14.6	13.7	13.2	12.2
85	10.1	10.4	10.3	10.5	10.3	10.4	10.2	10.2	9.80	9.72	9.21	8.97	8.37	8.03	7.38	7.02	6.40	5.97	5.26
90	3.83	4.01	3.95	4.08	3.97	4.03	3.85	3.83	3.60	3.54	3.18	2.99	2.62	2.42	2.04	1.85	1.50	1.18	0.63
95	0.62	0.68	0.66	0.71	0.68	0.69	0.66	0.67	0.64	0.65	0.63	0.63	0.62	0.61	0.58	0.48	0.42	0.40	0.40
100	0.31	0.32	0.33	0.34	0.36	0.37	0.39	0.39	0.41	0.41	0.42	0.37	0.34	0.34	0.35	0.35	0.35	0.35	0.34
105	0.33	0.35	0.34	0.36	0.36	0.36	0.36	0.36	0.35	0.35	0.35	0.36	0.35	0.37	0.36	0.37	0.37	0.38	0.38
110	0.37	0.38	0.37	0.38	0.38	0.39	0.39	0.40	0.40	0.41	0.40	0.42	0.41	0.43	0.42	0.43	0.43	0.45	0.45
115	0.43	0.44	0.43	0.45	0.44	0.46	0.45	0.46	0.46	0.47	0.46	0.47	0.47	0.48	0.47	0.49	0.49	0.51	0.51
120	0.49	0.50	0.49	0.51	0.50	0.52	0.51	0.52	0.52	0.52	0.51	0.52	0.52	0.54	0.53	0.55	0.55	0.57	0.57
125	0.56	0.56	0.55	0.57	0.56	0.58	0.57	0.57	0.57	0.58	0.57	0.58	0.58	0.60	0.59	0.61	0.61	0.64	0.64
130	0.62	0.62	0.61	0.63	0.62	0.63	0.63	0.64	0.62	0.63	0.63	0.64	0.64	0.66	0.66	0.67	0.68	0.70	0.70
135	0.68	0.69	0.68	0.69	0.68	0.69	0.68	0.69	0.68	0.70	0.69	0.71	0.71	0.72	0.72	0.74	0.74	0.76	0.76
140	0.74	0.75	0.74	0.75	0.74	0.75	0.74	0.75	0.75	0.76	0.76	0.77	0.77	0.78	0.78	0.80	0.80	0.82	0.82
145	0.80	0.81	0.81	0.82	0.81	0.82	0.81	0.82	0.81	0.82	0.82	0.83	0.83	0.84	0.84	0.86	0.86	0.88	0.88
150	0.87	0.88	0.87	0.88	0.87	0.88	0.87	0.88	0.87	0.88	0.88	0.89	0.88	0.90	0.90	0.92	0.92	0.94	0.94
155	0.93	0.94	0.93	0.94	0.93	0.94	0.93	0.94	0.93	0.94	0.93	0.95	0.95	0.96	0.96	0.98	0.98	1.00	0.99
160	0.99	1.00	1.00	1.00	0.99	1.00	0.99	1.00	0.99	1.00	0.99	1.01	1.00	1.02	1.01	1.03	1.03	1.05	1.04
165	1.05	1.06	1.05	1.06	1.04	1.05	1.04	1.05	1.04	1.05	1.05	1.06	1.05	1.06	1.06	1.08	1.07	1.09	1.08
170	1.11	1.12	1.10	1.11	1.10	1.10	1.09	1.10	1.09	1.10	1.09	1.11	1.10	1.11	1.11	1.12	1.12	1.13	1.12
175	1.15	1.16	1.15	1.16	1.14	1.15	1.13	1.14	1.13	1.14	1.13	1.15	1.14	1.15	1.14	1.16	1.15	1.16	1.15
180	1.19	1.19	1.18	1.18	1.17	1.17	1.17	1.17	1.17	1.17	1.17	1.17	1.17	1.17	1.17	1.17	1.17	1.17	1.17

C Range: 0 - 360DEG
C Interval: 5.0DEG
Test Speed: HIGH
Temperature: 25.3DEG
Operators: DAMIN
Test Date: 2015-07-29

γ Range: 0 - 180DEG
γ Interval: 1.0DEG
Test System: EVERFINE GO-2000B_V1 SYSTEM V2.0.351
Humidity: 65.0%
Test Distance: 4.950m [K=1.0000]
Remarks:

LUMINOUS DISTRIBUTION INTENSITY DATA

Table--2

UNIT: cd

C(DEG) γ (DEG)	95	100	105	110	115	120	125	130	135	140	145	150	155	160	165	170	175	180	185
0	99.8	99.7	99.8	100.0	100	100	100	100	101	101	101	101	101	101	101	101	101	101	101
5	99.5	99.3	99.3	99.4	99.6	99.5	99.5	99.5	99.8	99.6	99.6	99.5	99.6	99.5	99.7	99.8	99.8	100	100
10	98.3	98.0	98.0	98.0	98.1	97.9	97.8	97.8	98.0	97.7	97.7	97.6	97.5	97.5	97.6	97.7	97.6	98.2	97.9
15	96.3	95.9	95.8	95.7	95.7	95.4	95.3	95.2	95.4	95.0	94.9	94.7	94.7	94.6	94.8	94.8	94.7	95.3	95.0
20	93.6	93.1	92.9	92.7	92.7	92.2	92.1	91.9	91.9	91.5	91.4	91.1	91.1	90.9	91.1	91.0	91.0	91.7	91.4
25	90.1	89.6	89.3	89.0	88.8	88.2	88.1	87.8	87.7	87.2	87.0	86.7	86.6	86.5	86.6	86.5	86.5	87.2	86.9
30	85.9	85.3	84.9	84.5	84.2	83.6	83.4	83.1	82.8	82.2	82.0	81.5	81.5	81.3	81.5	81.3	81.4	82.1	81.8
35	81.0	80.3	79.9	79.3	78.9	78.2	78.0	77.6	77.1	76.5	76.3	75.8	75.7	75.4	75.6	75.4	75.5	76.3	76.0
40	75.4	74.6	74.2	73.5	73.0	72.2	71.9	71.3	70.8	70.1	69.8	69.3	69.1	68.9	69.0	68.7	68.9	69.8	69.4
45	69.1	68.2	67.8	67.0	66.4	65.6	65.3	64.3	63.9	63.1	62.8	62.2	62.1	61.7	61.9	61.6	61.7	62.7	62.3
50	62.3	61.2	60.8	59.8	59.2	58.3	57.9	56.8	56.4	55.5	55.2	54.5	54.4	54.0	54.1	53.7	54.0	55.1	54.7
55	54.7	53.6	53.1	52.0	51.4	50.5	49.8	48.7	48.3	47.3	47.0	46.3	46.2	45.8	45.8	45.5	45.7	46.9	46.5
60	46.5	45.5	44.8	43.7	43.1	42.0	41.2	40.2	39.6	38.8	38.4	37.7	37.6	37.1	37.1	36.8	37.0	38.3	37.9
65	37.9	36.8	36.1	35.0	34.3	33.1	32.3	31.3	30.7	29.9	29.5	28.8	28.7	28.2	28.2	27.9	28.1	29.4	29.1
70	28.9	27.9	27.1	26.0	25.1	24.0	23.2	22.2	21.7	20.9	20.5	19.9	19.7	19.3	19.3	19.1	19.2	20.5	20.2
75	19.9	18.9	18.2	17.0	16.2	15.2	14.5	13.6	13.2	12.5	12.2	11.7	11.5	11.2	11.2	11.0	11.2	12.2	12.0
80	11.6	10.7	10.0	9.02	8.40	7.54	7.06	6.38	6.05	5.52	5.32	4.95	4.91	4.67	4.73	4.57	4.75	5.41	5.23
85	4.92	4.26	3.73	3.04	2.64	2.14	1.89	1.55	1.42	1.23	1.17	1.05	1.05	0.98	1.01	0.97	1.03	1.23	1.14
90	0.92	0.87	0.75	0.66	0.59	0.56	0.52	0.52	0.50	0.50	0.47	0.48	0.52	0.46	0.46	0.45	0.45	0.38	0.37
95	0.40	0.39	0.35	0.35	0.34	0.36	0.36	0.39	0.40	0.42	0.42	0.44	0.44	0.46	0.46	0.47	0.48	0.42	0.40
100	0.35	0.35	0.35	0.34	0.36	0.36	0.38	0.39	0.41	0.41	0.43	0.44	0.46	0.46	0.48	0.48	0.50	0.44	0.42
105	0.39	0.39	0.40	0.40	0.41	0.41	0.43	0.43	0.45	0.45	0.47	0.47	0.49	0.50	0.52	0.52	0.53	0.50	0.48
110	0.46	0.45	0.47	0.46	0.48	0.47	0.49	0.49	0.51	0.50	0.52	0.52	0.54	0.53	0.55	0.55	0.56	0.54	0.53
115	0.52	0.52	0.53	0.53	0.54	0.54	0.55	0.55	0.56	0.56	0.57	0.57	0.58	0.57	0.59	0.58	0.59	0.59	0.58
120	0.59	0.58	0.60	0.59	0.61	0.60	0.62	0.61	0.62	0.62	0.63	0.62	0.63	0.62	0.64	0.62	0.63	0.65	0.64
125	0.65	0.64	0.66	0.66	0.67	0.66	0.68	0.68	0.69	0.68	0.69	0.69	0.69	0.69	0.69	0.68	0.69	0.71	0.70
130	0.71	0.71	0.72	0.72	0.73	0.73	0.74	0.74	0.75	0.75	0.76	0.75	0.76	0.75	0.76	0.75	0.76	0.77	0.76
135	0.78	0.77	0.79	0.78	0.79	0.79	0.80	0.80	0.81	0.81	0.82	0.81	0.82	0.81	0.82	0.81	0.82	0.82	0.81
140	0.84	0.83	0.85	0.84	0.85	0.84	0.86	0.86	0.87	0.86	0.87	0.86	0.88	0.87	0.88	0.87	0.88	0.88	0.87
145	0.90	0.89	0.90	0.90	0.91	0.90	0.91	0.91	0.92	0.91	0.92	0.91	0.93	0.92	0.93	0.92	0.93	0.93	0.92
150	0.96	0.95	0.96	0.95	0.96	0.95	0.96	0.96	0.97	0.96	0.97	0.96	0.97	0.96	0.97	0.96	0.98	0.98	0.97
155	1.01	1.00	1.01	1.00	1.01	1.00	1.01	1.00	1.01	1.00	1.02	1.01	1.02	1.01	1.02	1.01	1.02	1.02	1.01
160	1.06	1.05	1.06	1.05	1.06	1.05	1.06	1.05	1.06	1.05	1.06	1.05	1.06	1.05	1.06	1.05	1.07	1.07	1.05
165	1.10	1.09	1.10	1.09	1.10	1.09	1.10	1.10	1.11	1.09	1.10	1.09	1.10	1.09	1.10	1.10	1.11	1.11	1.09
170	1.13	1.13	1.14	1.13	1.14	1.13	1.14	1.13	1.15	1.13	1.14	1.13	1.14	1.13	1.15	1.13	1.15	1.15	1.14
175	1.16	1.15	1.17	1.16	1.17	1.16	1.17	1.17	1.18	1.17	1.18	1.17	1.17	1.16	1.17	1.17	1.18	1.18	1.17
180	1.17	1.17	1.17	1.17	1.17	1.17	1.17	1.18	1.18	1.18	1.18	1.17	1.17	1.18	1.18	1.18	1.19	1.19	1.19

C Range: 0 - 360DEG
 C Interval: 5.0DEG
 Test Speed: HIGH
 Temperature:25.3DEG
 Operators:DAMIN
 Test Date:2015-07-29

γ Range: 0 - 180DEG
 γ Interval: 1.0DEG
 Test System:EVERFINE GO-2000B_V1 SYSTEM V2.0.351
 Humidity:65.0%
 Test Distance:4.950m [K=1.0000]
 Remarks:

LUMINOUS DISTRIBUTION INTENSITY DATA

Table--3

UNIT: cd

C(DEG) γ (DEG)	190	195	200	205	210	215	220	225	230	235	240	245	250	255	260	265	270	275	280
0	101	101	101	101	101	100	100	100	100	100	100	100	100	100.0	99.9	100.0	99.9	99.8	99.7
5	99.8	99.6	99.5	99.4	99.4	99.3	99.2	99.2	99.2	99.2	99.0	99.0	99.1	99.1	99.2	99.3	99.2	99.2	99.3
10	97.7	97.5	97.5	97.3	97.3	97.2	97.2	97.2	97.3	97.2	97.2	97.2	97.3	97.4	97.5	97.7	97.8	97.8	98.0
15	94.8	94.7	94.6	94.5	94.5	94.4	94.4	94.4	94.5	94.5	94.5	94.5	94.8	94.9	95.1	95.3	95.5	95.6	95.9
20	91.2	91.0	91.0	90.9	90.9	90.7	90.8	90.8	90.9	91.0	91.1	91.1	91.5	91.6	92.0	92.3	92.6	92.8	93.2
25	86.8	86.6	86.6	86.4	86.5	86.4	86.4	86.4	86.6	86.8	87.0	87.0	87.5	87.8	88.2	88.7	89.1	89.3	89.8
30	81.7	81.5	81.5	81.3	81.3	81.2	81.3	81.3	81.6	81.9	82.2	82.4	83.0	83.3	83.9	84.5	85.0	85.3	85.9
35	75.9	75.7	75.7	75.5	75.5	75.4	75.5	75.5	76.0	76.3	76.9	77.1	77.8	78.3	79.0	79.5	80.2	80.6	81.3
40	69.5	69.2	69.2	69.0	69.1	68.9	69.2	69.2	69.8	70.2	71.0	71.3	72.0	72.6	73.4	74.0	74.7	75.2	76.0
45	62.4	62.1	62.2	61.9	62.0	61.9	62.3	62.4	63.1	63.6	64.4	64.8	65.6	66.2	67.1	67.8	68.6	69.2	70.0
50	54.8	54.5	54.6	54.2	54.4	54.3	54.9	55.1	55.9	56.3	57.2	57.8	58.7	59.2	60.3	60.9	61.9	62.5	63.5
55	46.6	46.3	46.4	46.0	46.3	46.3	47.0	47.2	48.0	48.4	49.5	50.0	51.1	51.6	52.8	53.4	54.6	55.1	56.2
60	38.0	37.7	37.8	37.5	37.8	38.0	38.6	38.8	39.7	40.2	41.2	41.8	42.9	43.6	44.7	45.5	46.6	47.3	48.4
65	29.2	29.0	29.0	28.8	29.1	29.3	29.9	30.2	31.0	31.5	32.5	33.2	34.3	35.0	36.2	37.0	38.2	38.9	40.1
70	20.3	20.1	20.2	20.0	20.4	20.6	21.1	21.4	22.2	22.7	23.7	24.3	25.4	26.2	27.6	28.5	29.8	30.4	31.3
75	12.0	11.9	12.0	11.9	12.2	12.4	12.9	13.1	13.8	14.3	15.1	15.7	16.8	17.6	18.7	19.5	20.6	21.4	22.0
80	5.25	5.14	5.21	5.19	5.43	5.54	5.91	6.09	6.63	7.00	7.66	8.01	8.76	9.35	10.3	11.0	12.2	12.6	12.9
85	1.15	1.08	1.13	1.12	1.21	1.24	1.39	1.46	1.73	1.91	2.27	2.51	3.01	3.36	4.06	4.52	5.10	4.70	6.14
90	0.36	0.36	0.37	0.40	0.41	0.45	0.47	0.52	0.56	0.61	0.62	0.66	0.71	0.78	0.88	0.83	0.67	1.09	1.51
95	0.39	0.36	0.37	0.38	0.37	0.38	0.38	0.40	0.43	0.43	0.43	0.43	0.44	0.43	0.41	0.38	0.36	0.40	0.38
100	0.41	0.37	0.38	0.37	0.39	0.39	0.42	0.44	0.47	0.48	0.51	0.50	0.49	0.48	0.38	0.36	0.35	0.36	0.38
105	0.47	0.43	0.44	0.44	0.45	0.46	0.49	0.51	0.55	0.57	0.60	0.58	0.61	0.52	0.43	0.40	0.41	0.39	0.41
110	0.53	0.50	0.51	0.51	0.52	0.53	0.55	0.57	0.62	0.64	0.65	0.68	0.64	0.54	0.49	0.47	0.48	0.46	0.46
115	0.59	0.57	0.58	0.57	0.59	0.59	0.62	0.63	0.66	0.70	0.70	0.70	0.64	0.56	0.56	0.54	0.54	0.52	0.52
120	0.65	0.63	0.64	0.64	0.65	0.65	0.67	0.67	0.69	0.73	0.77	0.75	0.66	0.63	0.62	0.61	0.61	0.59	0.59
125	0.71	0.70	0.71	0.70	0.72	0.71	0.72	0.73	0.75	0.77	0.77	0.73	0.71	0.69	0.69	0.67	0.67	0.65	0.65
130	0.77	0.76	0.77	0.76	0.78	0.77	0.79	0.78	0.80	0.78	0.79	0.78	0.77	0.74	0.75	0.74	0.74	0.71	0.71
135	0.82	0.82	0.83	0.82	0.83	0.83	0.84	0.83	0.84	0.83	0.84	0.82	0.82	0.80	0.81	0.80	0.80	0.78	0.77
140	0.88	0.87	0.88	0.88	0.89	0.88	0.89	0.88	0.89	0.88	0.88	0.87	0.87	0.86	0.87	0.85	0.85	0.83	0.83
145	0.93	0.92	0.93	0.93	0.94	0.93	0.94	0.93	0.94	0.92	0.93	0.91	0.92	0.91	0.92	0.91	0.91	0.89	0.89
150	0.98	0.97	0.98	0.97	0.98	0.97	0.98	0.97	0.98	0.97	0.98	0.97	0.98	0.97	0.98	0.96	0.96	0.94	0.94
155	1.02	1.01	1.02	1.01	1.02	1.01	1.02	1.01	1.02	1.01	1.02	1.01	1.03	1.02	1.03	1.01	1.01	1.00	1.00
160	1.06	1.05	1.06	1.05	1.06	1.05	1.06	1.05	1.07	1.06	1.07	1.06	1.07	1.06	1.07	1.05	1.06	1.05	1.04
165	1.10	1.09	1.10	1.09	1.10	1.09	1.10	1.10	1.11	1.10	1.11	1.10	1.11	1.10	1.11	1.10	1.10	1.08	1.09
170	1.14	1.13	1.14	1.13	1.14	1.13	1.14	1.13	1.14	1.13	1.14	1.13	1.14	1.13	1.14	1.13	1.14	1.12	1.13
175	1.17	1.16	1.17	1.16	1.17	1.16	1.17	1.16	1.17	1.16	1.17	1.16	1.17	1.16	1.17	1.16	1.17	1.15	1.16
180	1.19	1.17	1.17	1.17	1.17	1.17	1.17	1.17	1.17	1.17	1.17	1.17	1.17	1.17	1.17	1.17	1.17	1.17	1.17

C Range: 0 - 360DEG
 C Interval: 5.0DEG
 Test Speed: HIGH
 Temperature: 25.3DEG
 Operators: DAMIN
 Test Date: 2015-07-29

γ Range: 0 - 180DEG
 γ Interval: 1.0DEG
 Test System: EVERFINE GO-2000B_V1 SYSTEM V2.0.351
 Humidity: 65.0%
 Test Distance: 4.950m [K=1.0000]
 Remarks:

LUMINOUS DISTRIBUTION INTENSITY DATA

Table--4

UNIT: cd

C(DEG) γ (DEG)	285	290	295	300	305	310	315	320	325	330	335	340	345	350	355				
0	99.8	100.0	100	100	100	100	101	101	101	101	101	101	101	101	101				
5	99.4	99.7	100	100	100	100	101	101	101	101	101	101	101	101	101				
10	98.2	98.6	98.9	99.1	99.3	99.6	100	100	100	100	101	101	101	101	101				
15	96.2	96.7	97.2	97.4	97.6	98.1	98.5	98.6	98.8	99.0	99.1	99.2	99.5	99.7	99.6				
20	93.6	94.1	94.7	94.9	95.3	95.8	96.2	96.3	96.5	96.8	96.9	97.1	97.4	97.6	97.5				
25	90.3	90.9	91.5	91.8	92.2	92.8	93.2	93.3	93.6	93.8	93.9	94.2	94.4	94.6	94.6				
30	86.4	87.2	87.7	88.1	88.6	89.2	89.4	89.7	89.9	90.1	90.2	90.5	90.7	90.9	90.8				
35	81.9	82.7	83.2	83.7	84.2	85.0	85.0	85.3	85.5	85.7	85.8	86.1	86.3	86.5	86.4				
40	76.6	77.5	78.0	78.6	79.2	79.8	79.9	80.3	80.3	80.7	80.6	81.0	81.1	81.3	81.1				
45	70.7	71.7	72.1	72.8	73.5	73.9	74.1	74.5	74.6	74.9	74.9	75.2	75.2	75.4	75.2				
50	64.2	65.2	65.6	66.5	66.9	67.4	67.6	68.1	68.2	68.5	68.5	68.8	68.7	68.9	68.7				
55	57.0	57.9	58.4	59.5	59.7	60.3	60.4	61.0	61.0	61.4	61.4	61.8	61.5	61.7	61.5				
60	49.2	50.1	50.8	51.6	51.9	52.6	52.7	53.3	53.3	53.8	53.7	54.0	53.8	53.9	53.5				
65	40.8	41.8	42.4	43.2	43.6	44.3	44.2	45.1	44.4	45.1	45.6	45.9	44.9	45.6	45.5				
70	32.1	32.9	33.1	33.7	34.2	34.9	35.8	36.4	35.9	37.0	36.9	37.1	36.9	37.1	36.8				
75	22.4	23.4	24.2	25.0	25.3	26.0	26.9	27.5	27.5	28.1	27.7	27.8	28.1	27.7	27.5				
80	13.6	14.8	15.4	16.2	16.9	17.4	17.6	18.6	18.8	19.1	18.9	19.4	19.0	19.3	19.1				
85	6.70	7.53	7.94	8.75	9.10	9.63	9.69	10.5	10.6	10.8	11.0	11.2	11.1	11.2	10.8				
90	1.73	2.17	2.41	2.83	3.04	3.50	3.68	3.89	4.11	4.44	4.40	4.63	4.44	4.61	4.45				
95	0.43	0.57	0.59	0.61	0.61	0.62	0.66	0.72	0.74	0.77	0.80	0.85	0.81	0.85	0.79				
100	0.37	0.37	0.38	0.37	0.40	0.43	0.44	0.43	0.43	0.42	0.40	0.39	0.37	0.36	0.36				
105	0.37	0.38	0.39	0.40	0.39	0.40	0.39	0.39	0.40	0.40	0.40	0.40	0.39	0.39	0.38				
110	0.44	0.45	0.46	0.46	0.44	0.45	0.44	0.44	0.43	0.43	0.42	0.43	0.42	0.42	0.41				
115	0.51	0.54	0.52	0.52	0.51	0.51	0.50	0.50	0.49	0.49	0.48	0.49	0.48	0.49	0.48				
120	0.58	0.60	0.58	0.56	0.56	0.57	0.56	0.56	0.55	0.56	0.54	0.55	0.54	0.55	0.54				
125	0.64	0.65	0.61	0.62	0.61	0.62	0.61	0.62	0.61	0.61	0.60	0.61	0.60	0.61	0.60				
130	0.69	0.69	0.67	0.68	0.66	0.68	0.66	0.67	0.66	0.67	0.66	0.67	0.66	0.67	0.66				
135	0.75	0.75	0.74	0.74	0.73	0.74	0.72	0.73	0.71	0.72	0.71	0.72	0.71	0.72	0.71				
140	0.81	0.81	0.79	0.80	0.79	0.79	0.78	0.79	0.78	0.78	0.77	0.78	0.78	0.78	0.77				
145	0.87	0.87	0.85	0.86	0.84	0.85	0.84	0.85	0.83	0.84	0.83	0.84	0.83	0.84	0.83				
150	0.93	0.93	0.91	0.91	0.90	0.91	0.90	0.90	0.89	0.90	0.89	0.90	0.90	0.91	0.89				
155	0.98	0.98	0.96	0.97	0.95	0.96	0.95	0.96	0.95	0.96	0.95	0.96	0.96	0.97	0.95				
160	1.03	1.03	1.02	1.02	1.01	1.01	1.00	1.01	1.00	1.02	1.01	1.02	1.01	1.03	1.01				
165	1.07	1.08	1.06	1.07	1.06	1.06	1.05	1.06	1.05	1.06	1.06	1.07	1.07	1.08	1.07				
170	1.12	1.12	1.11	1.12	1.10	1.11	1.10	1.11	1.09	1.10	1.10	1.11	1.12	1.13	1.12				
175	1.15	1.16	1.15	1.16	1.14	1.15	1.15	1.16	1.14	1.15	1.14	1.15	1.15	1.17	1.16				
180	1.17	1.17	1.17	1.17	1.17	1.17	1.18	1.18	1.17	1.17	1.17	1.17	1.17	1.18	1.19				

C Range: 0 - 360DEG
 C Interval: 5.0DEG
 Test Speed: HIGH
 Temperature: 25.3DEG
 Operators: DAMIN
 Test Date: 2015-07-29

γ Range: 0 - 180DEG
 γ Interval: 1.0DEG
 Test System: EVERFINE GO-2000B_V1 SYSTEM V2.0.351
 Humidity: 65.0%
 Test Distance: 4.950m [K=1.0000]
 Remarks: