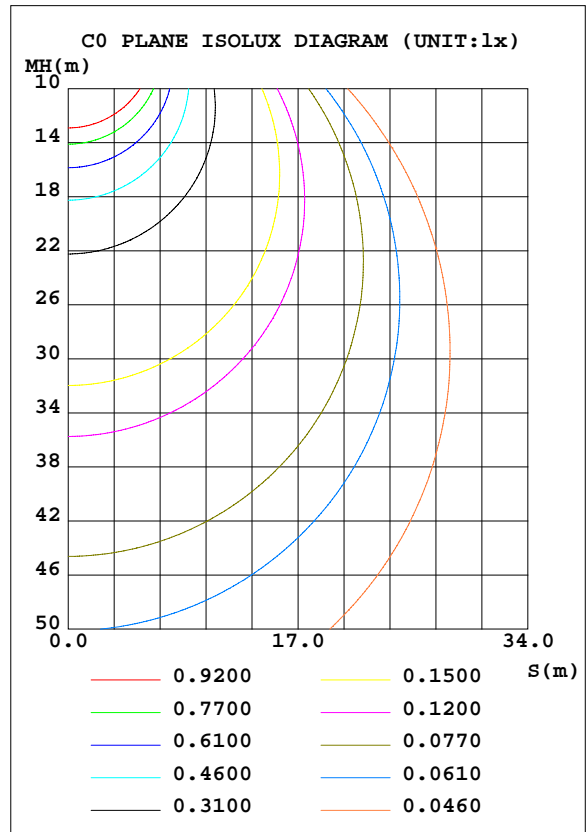
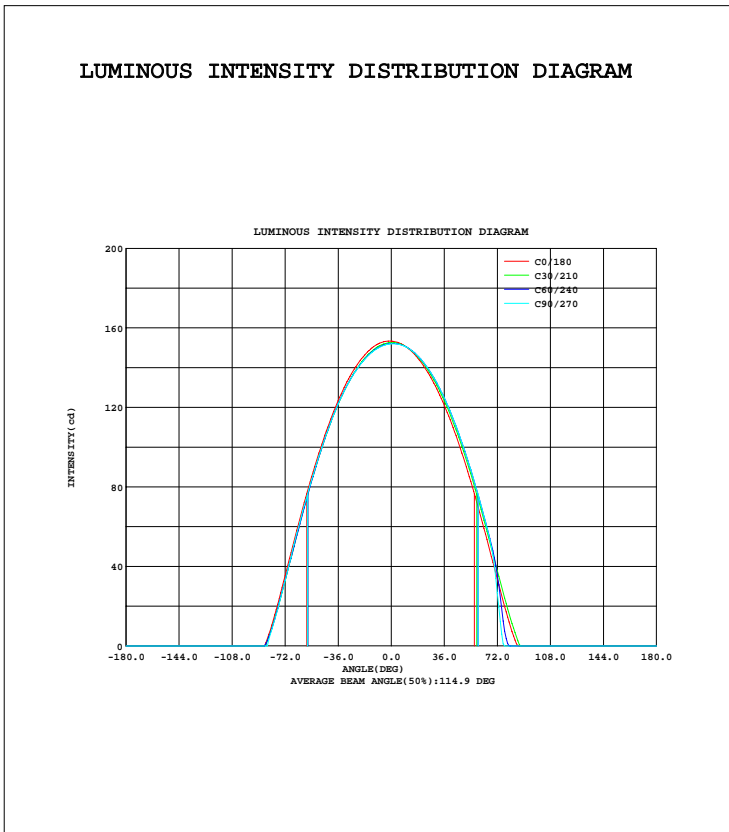


LUMINAIRE PHOTOMETRIC TEST REPORT

Test:U:24.00V I:0.2402A P:5.765W PF:1.000 Lamp Flux:436.313x1 lm		
NAME: LED Strip	TYPE:Indoor lighting	WEIGHT:25g
SPEC.:2016+5050 180LED	DIM.: 1000*14*1MM	SERIAL No.:201601025006
MFR.: Dilux	SUR.:1000*14mm	Shielding Angle:

DATA OF LAMP		PHOTOMETRIC DATA Eff: 75.68 lm/W			
MODEL	FLS103T58FD180B-24(WCP)-UR	Imax(cd)	153.3	S/MH(C0/180)	1.29
NOMINAL POWER(W)	5.78	LOR(%)	100.0	S/MH(C90/270)	1.28
RATED VOLTAGE(V)	24	TOTAL FLUX(lm)	436.31	$\eta$ UP, DN(C0-180)	0.0,50.3
NOMINAL FLUX(lm)	436.313	CIE CLASS	DIRECT	$\eta$ UP, DN(C180-360)	0.0,49.7
LAMPS INSIDE	1	$\eta$ up(%)	0.0	CIBSE SHR NOM	1.25
TEST VOLTAGE(V)	24	$\eta$ down(%)	100.0	CIBSE SHR MAX	1.35



C Range: 0 - 360DEG  
 C Interval: 10.0DEG  
 Test Speed: HIGH  
 Temperature:25.3DEG  
 Operators:DAMIN  
 Test Date:2016-10-25

$\gamma$  Range: 0 - 180DEG  
 $\gamma$  Interval: 1.0DEG  
 Test System:EVERFINE GO-2000B\_V1 SYSTEM V2.0.351  
 Humidity:65.0%  
 Test Distance:4.950m [K=1.0000]  
 Remarks:

ZONAL FLUX DIAGRAM

ZONAL FLUX DIAGRAM:

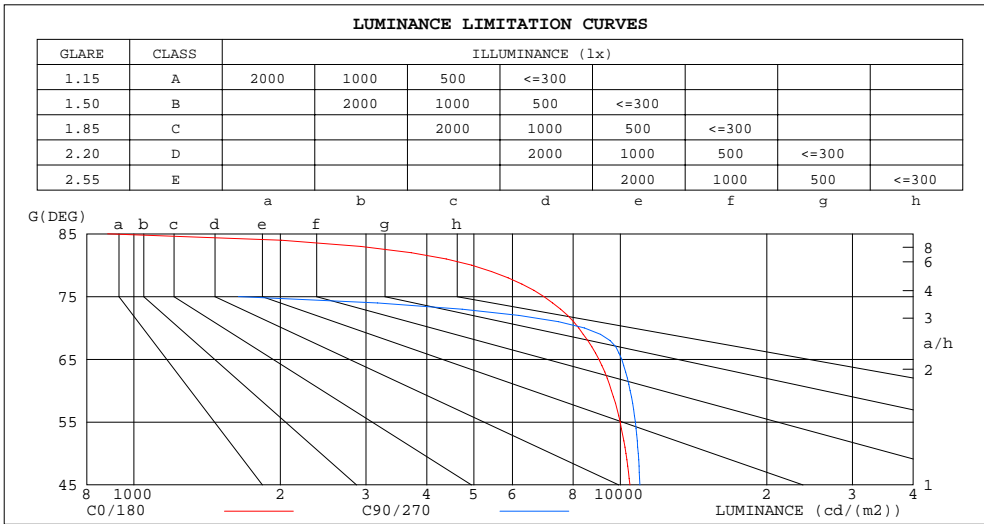
γ	C0	C45	C90	C135	C180	C225	C270	C315	γ	Φ zone	Φ total	Φlum, lamp
10	150.5	150.6	150.4	150.9	151.5	149.8	149.4	150.2	0- 10	14.46	14.46	3.31,3.31
20	142.9	144.2	144.3	144.4	144.6	142.6	142.4	143.2	10- 20	41.65	56.11	12.9,12.9
30	130.7	133.1	133.6	133.1	132.9	130.8	131.0	131.6	20- 30	63.78	119.9	27.5,27.5
40	113.8	117.3	118.1	116.8	116.0	114.3	114.4	115.3	30- 40	77.85	197.7	45.3,45.3
50	92.43	97.06	97.96	95.51	94.70	92.64	93.11	94.23	40- 50	81.53	279.3	64,64
60	67.12	72.58	73.34	70.08	69.40	66.64	67.88	69.06	50- 60	73.74	353.0	80.9,80.9
70	39.32	44.65	40.40	41.45	41.10	38.09	38.68	40.39	60- 70	54.85	407.9	93.5,93.5
80	12.04	14.73	0	11.61	12.99	11.31	10.86	13.36	70- 80	25.32	433.2	99.3,99.3
90	0	0	0	0	0	0	0	0	80- 90	3.133	436.3	100,100
100	0	0	0	0	0	0	0	0	90-100	0	436.3	100,100
110	0	0	0	0	0	0	0	0	100-110	0	436.3	100,100
120	0	0	0	0	0	0	0	0	110-120	0	436.3	100,100
130	0	0	0	0	0	0	0	0	120-130	0	436.3	100,100
140	0	0	0	0	0	0	0	0	130-140	0	436.3	100,100
150	0	0	0	0	0	0	0	0	140-150	0	436.3	100,100
160	0	0	0	0	0	0	0	0	150-160	0	436.3	100,100
170	0	0	0	0	0	0	0	0	160-170	0	436.3	100,100
180	0	0	0	0	0	0	0	0	170-180	0	436.3	100,100
DEG	LUMINOUS INTENSITY:cd									UNIT:lm		

C Range: 0 - 360DEG  
 C Interval: 10.0DEG  
 Test Speed: HIGH  
 Temperature:25.3DEG  
 Operators:DAMIN  
 Test Date:2016-10-25

γ Range: 0 - 180DEG  
 γ Interval: 1.0DEG  
 Test System:EVERFINE GO-2000B\_V1 SYSTEM V2.0.351  
 Humidity:65.0%  
 Test Distance:4.950m [K=1.0000]  
 Remarks:

LUMINANCE LIMITATION CURVES

Test:U:24.00V I:0.2402A P:5.765W PF:1.000 Lamp Flux:436.313x1 lm		
NAME: LED Strip	TYPE:Indoor lighting	WEIGHT:25g
SPEC.:2016+5050 180LED	DIM.: 1000*14*1MM	SERIAL No.:201601025006
MFR.: Dilux	SUR.:1000*14mm	Shielding Angle:



LUMINANCE cd/(m2)		
G(DEG)	C0/180	C90/270
85	883	0
80	4952	0
75	6962	1640
70	8212	8436
65	9037	10071
60	9588	10477
55	9992	10737
50	10271	10885
45	10465	10968

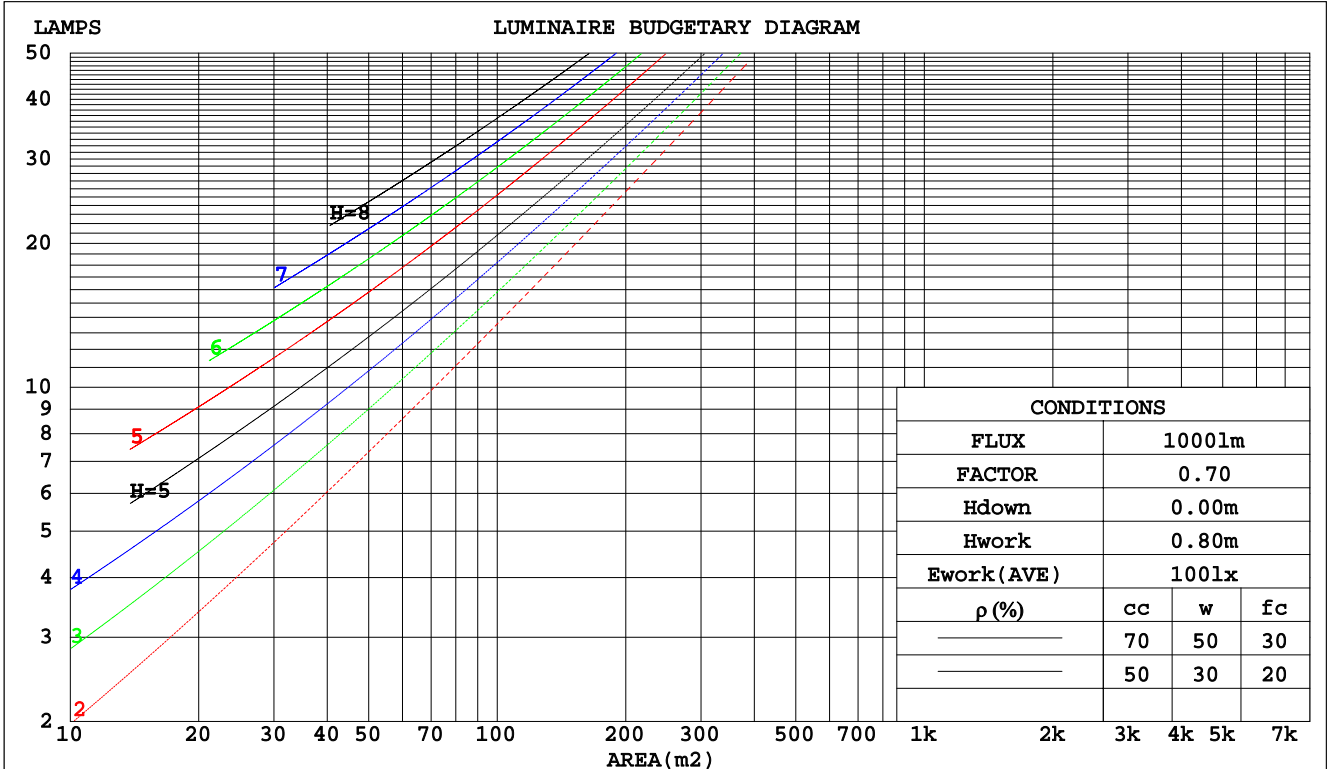
C Range: 0 - 360DEG  
 C Interval: 10.0DEG  
 Test Speed: HIGH  
 Temperature:25.3DEG  
 Operators:DAMIN  
 Test Date:2016-10-25

γ Range: 0 - 180DEG  
 γ Interval: 1.0DEG  
 Test System:EVERFINE GO-2000B\_V1 SYSTEM V2.0.351  
 Humidity:65.0%  
 Test Distance:4.950m [K=1.0000]  
 Remarks:

CU AND LUMINAIRE BUDGETARY ESTIMATE DIAGRAM

Test:U:24.00V I:0.2402A P:5.765W PF:1.000 Lamp Flux:436.313x1 lm		
NAME: LED Strip	TYPE:Indoor lighting	WEIGHT:25g
SPEC.:2016+5050 180LED	DIM.: 1000*14*1MM	SERIAL No.:201601025006
MFR.: Dilux	SUR.:1000*14mm	Shielding Angle:

pcc	80%			70%			50%			30%			10%			0
	50%	30%	10%	50%	30%	10%	50%	30%	10%	50%	30%	10%	50%	30%	10%	0
pw																0
pfc	20%			20%			20%			20%			20%			0
RCR	RCR:Room Cavity Ratio      Coefficients of Utilization(CU)															
0.0	1.19	1.19	1.19	1.16	1.16	1.16	1.11	1.11	1.11	1.06	1.06	1.06	1.02	1.02	1.02	1.00
1.0	1.05	1.01	.97	1.02	.99	.95	.98	.95	.92	.94	.92	.90	.91	.89	.87	.85
2.0	.91	.85	.79	.90	.83	.78	.86	.81	.76	.83	.78	.75	.80	.76	.73	.71
3.0	.80	.72	.66	.79	.71	.65	.76	.69	.64	.73	.68	.63	.70	.66	.62	.60
4.0	.71	.62	.56	.70	.62	.55	.67	.60	.55	.65	.59	.54	.63	.57	.53	.51
5.0	.63	.54	.48	.62	.54	.48	.60	.53	.47	.58	.52	.47	.56	.51	.46	.44
6.0	.57	.48	.42	.56	.48	.42	.54	.47	.41	.53	.46	.41	.51	.45	.40	.38
7.0	.52	.43	.37	.51	.43	.37	.49	.42	.36	.48	.41	.36	.46	.40	.36	.34
8.0	.47	.39	.33	.46	.38	.33	.45	.38	.32	.44	.37	.32	.43	.37	.32	.30
9.0	.43	.35	.29	.43	.35	.29	.41	.34	.29	.40	.34	.29	.39	.33	.29	.27
10.0	.40	.32	.27	.39	.32	.27	.38	.31	.26	.37	.31	.26	.36	.30	.26	.24



C Range: 0 - 360DEG  
 C Interval: 10.0DEG  
 Test Speed: HIGH  
 Temperature:25.3DEG  
 Operators:DAMIN  
 Test Date:2016-10-25

γ Range: 0 - 180DEG  
 γ Interval: 1.0DEG  
 Test System:EVERFINE GO-2000B\_V1 SYSTEM V2.0.351  
 Humidity:65.0%  
 Test Distance:4.950m [K=1.0000]  
 Remarks:

WEC AND CCEC

Test:U:24.00V I:0.2402A P:5.765W PF:1.000 Lamp Flux:436.313x1 lm		
NAME: LED Strip	TYPE:Indoor lighting	WEIGHT:25g
SPEC.:2016+5050 180LED	DIM.: 1000*14*1MM	SERIAL No.:201601025006
MFR.: Dilux	SUR.:1000*14mm	Shielding Angle:

ρcc	80%			70%			50%			30%			10%			0
ρw	50%	30%	10%	50%	30%	10%	50%	30%	10%	50%	30%	10%	50%	30%	10%	0
ρfc	20%			20%			20%			20%			20%			0
RCR	RCR:Room Cavity Ratio						Wall Exitance Coefficients(WEC)									
0.0																
1.0	.293	.167	.053	.286	.163	.052	.273	.157	.050	.261	.150	.048	.250	.145	.047	
2.0	.282	.155	.047	.276	.152	.047	.264	.147	.046	.254	.142	.045	.244	.138	.043	
3.0	.264	.141	.042	.259	.138	.042	.248	.135	.041	.239	.131	.040	.230	.127	.039	
4.0	.245	.127	.037	.240	.126	.037	.231	.123	.037	.223	.120	.036	.215	.117	.036	
5.0	.228	.116	.034	.223	.115	.033	.215	.112	.033	.208	.110	.033	.201	.107	.032	
6.0	.212	.106	.030	.208	.105	.030	.201	.103	.030	.194	.101	.030	.188	.099	.029	
7.0	.197	.098	.028	.194	.097	.028	.188	.095	.027	.182	.093	.027	.176	.091	.027	
8.0	.185	.090	.025	.182	.089	.025	.176	.088	.025	.170	.086	.025	.165	.085	.025	
9.0	.173	.084	.023	.171	.083	.023	.165	.082	.023	.160	.080	.023	.156	.079	.023	
10.0	.163	.078	.022	.161	.078	.022	.156	.076	.022	.152	.075	.021	.147	.074	.021	

ρcc	80%			70%			50%			30%			10%			0
ρw	50%	30%	10%	50%	30%	10%	50%	30%	10%	50%	30%	10%	50%	30%	10%	0
ρfc	20%			20%			20%			20%			20%			0
RCR	RCR:Room Cavity Ratio						Ceiling Cavity Exitance Coefficients(CCEC)									
0.0	.190	.190	.190	.163	.163	.163	.111	.111	.111	.064	.064	.064	.020	.020	.020	
1.0	.179	.156	.136	.153	.134	.117	.105	.092	.081	.060	.053	.047	.019	.017	.015	
2.0	.171	.132	.099	.146	.114	.086	.100	.079	.060	.058	.046	.035	.019	.015	.011	
3.0	.163	.114	.075	.140	.099	.065	.096	.068	.046	.056	.040	.027	.018	.013	.009	
4.0	.156	.101	.059	.134	.087	.051	.092	.061	.036	.053	.036	.021	.017	.012	.007	
5.0	.149	.090	.048	.128	.078	.041	.088	.055	.029	.051	.032	.017	.016	.010	.006	
6.0	.142	.082	.039	.122	.071	.034	.084	.050	.024	.049	.029	.014	.016	.010	.005	
7.0	.135	.075	.033	.116	.065	.029	.080	.046	.021	.047	.027	.012	.015	.009	.004	
8.0	.129	.069	.029	.111	.060	.025	.077	.042	.018	.045	.025	.011	.014	.008	.004	
9.0	.123	.064	.025	.106	.056	.022	.073	.039	.016	.043	.023	.009	.014	.008	.003	
10.0	.117	.060	.022	.101	.052	.020	.070	.037	.014	.041	.022	.008	.013	.007	.003	

C Range: 0 - 360DEG  
 C Interval: 10.0DEG  
 Test Speed: HIGH  
 Temperature:25.3DEG  
 Operators:DAMIN  
 Test Date:2016-10-25

γ Range: 0 - 180DEG  
 γ Interval: 1.0DEG  
 Test System:EVERFINE GO-2000B\_V1 SYSTEM V2.0.351  
 Humidity:65.0%  
 Test Distance:4.950m [K=1.0000]  
 Remarks:

UGR(Unified Glare Rating) Table

Test:U:24.00V I:0.2402A P:5.765W PF:1.000 Lamp Flux:436.313x1 lm		
NAME: LED Strip	TYPE:Indoor lighting	WEIGHT:25g
SPEC.:2016+5050 180LED	DIM.: 1000*14*1MM	SERIAL No.:201601025006
MFR.: Dilux	SUR.:1000*14mm	Shielding Angle:

ceiling/cavity	0.7	0.7	0.5	0.5	0.3	0.7	0.7	0.5	0.5	0.3
walls	0.5	0.3	0.5	0.3	0.3	0.5	0.3	0.5	0.3	0.3
working plane	0.2	0.2	0.2	0.2	0.2	0.2	0.2	0.2	0.2	0.2
Room dimensions	Viewed crosswise					Viewed endwise				
x = 2H y = 2H	21.1	22.6	21.4	22.8	23.0	21.4	22.9	21.7	23.1	23.3
3H	22.5	23.9	22.8	24.1	24.4	22.8	24.2	23.1	24.4	24.7
4H	23.0	24.3	23.3	24.5	24.8	22.9	24.2	23.2	24.4	24.7
6H	23.2	24.5	23.6	24.7	25.0	22.8	24.0	23.1	24.3	24.5
8H	23.2	24.4	23.6	24.7	25.0	22.7	23.9	23.0	24.2	24.5
12H	23.2	24.4	23.6	24.7	25.0	22.7	23.8	23.0	24.1	24.4
4H 2H	21.8	23.1	22.1	23.3	23.6	22.0	23.3	22.3	23.6	23.8
3H	23.4	24.5	23.7	24.8	25.1	23.6	24.7	23.9	25.0	25.3
4H	24.0	25.0	24.3	25.3	25.7	23.7	24.7	24.0	25.0	25.4
6H	24.3	25.2	24.7	25.6	26.0	23.6	24.5	24.0	24.9	25.2
8H	24.4	25.2	24.8	25.6	26.0	23.5	24.4	23.9	24.8	25.1
12H	24.4	25.2	24.8	25.5	25.9	23.5	24.3	23.9	24.7	25.1
8H 4H	24.2	25.1	24.6	25.4	25.8	23.9	24.7	24.3	25.1	25.5
6H	24.7	25.4	25.1	25.8	26.2	23.8	24.5	24.3	24.9	25.4
8H	24.8	25.4	25.3	25.9	26.3	23.8	24.4	24.2	24.8	25.3
12H	24.8	25.4	25.3	25.8	26.3	23.7	24.3	24.2	24.7	25.2
12H 4H	24.2	24.9	24.6	25.3	25.7	23.9	24.7	24.3	25.1	25.5
6H	24.7	25.3	25.2	25.7	26.2	23.9	24.5	24.3	24.9	25.4
8H	24.8	25.4	25.3	25.8	26.3	23.8	24.4	24.3	24.8	25.3
Variations with the observer position at spacings:										
S = 1.0H	+ 0.2 / - 0.2					+ 0.2 / - 0.3				
1.5H	+ 0.2 / - 0.4					+ 0.3 / - 0.5				
2.0H	+ 0.2 / - 0.4					+ 0.3 / - 0.3				

CIE Pub.117 Corrected 436.3 lm Total Lamp Luminous Flux. (8log(F/F0) = -2.9)

C Range: 0 - 360DEG  
 C Interval: 10.0DEG  
 Test Speed: HIGH  
 Temperature:25.3DEG  
 Operators:DAMIN  
 Test Date:2016-10-25

γ Range: 0 - 180DEG  
 γ Interval: 1.0DEG  
 Test System:EVERFINE GO-2000B\_V1 SYSTEM V2.0.351  
 Humidity:65.0%  
 Test Distance:4.950m [K=1.0000]  
 Remarks:

UTILIZATION FACTORS TABLE

Test:U:24.00V I:0.2402A P:5.765W PF:1.000 Lamp Flux:436.313x1 lm		
NAME: LED Strip	TYPE:Indoor lighting	WEIGHT:25g
SPEC.:2016+5050 180LED	DIM.: 1000*14*1MM	SERIAL No.:201601025006
MFR.: Dilux	SUR.:1000*14mm	Shielding Angle:

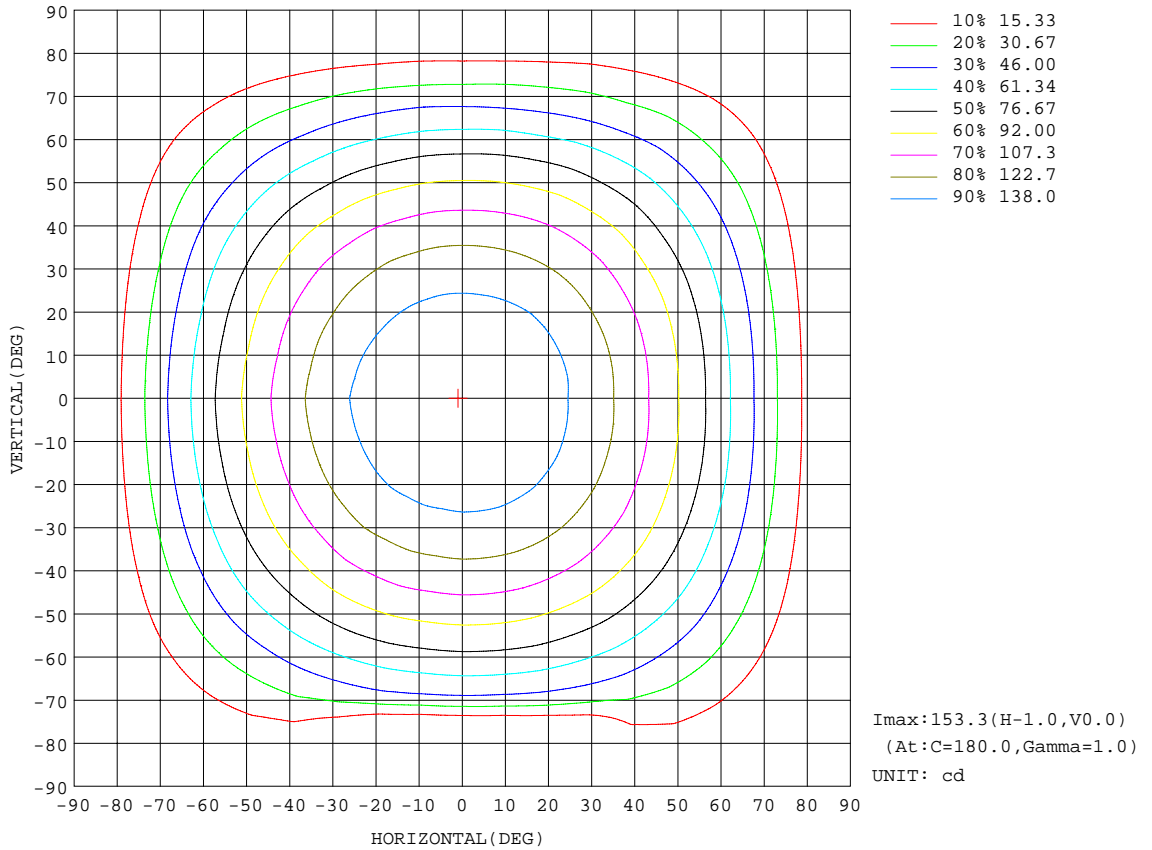
REFLECTANCE										
Ceiling	0.8	0.8	0.8	0.7	0.7	0.7	0.5	0.5	0.5	0
Walls	0.7	0.5	0.3	0.7	0.5	0.3	0.7	0.5	0.3	0
Working plane	0.2	0.2	0.2	0.2	0.2	0.2	0.2	0.2	0.2	0
ROOM INDEX	UTILIZATION FACTORS(PERCENT) $k(RI) \times RCR = 5$									
k = 0.60	58	46	39	57	46	39	56	45	39	33
0.80	68	56	49	67	56	49	65	55	49	42
1.00	77	66	58	75	65	58	73	66	58	51
1.25	84	74	66	82	73	66	80	71	65	58
1.50	89	79	72	87	78	72	84	77	71	63
2.00	96	87	81	94	86	80	91	84	79	71
2.50	100	92	86	98	91	85	94	88	84	75
3.00	103	96	91	101	95	90	97	92	88	80
4.00	107	102	97	105	100	96	100	96	93	84
5.00	109	105	101	107	103	99	102	99	96	87
ROOM INDEX	UF(total)									Direct
According to DIN EN 13032-2 2004			Suspended				SHRNOM = 1.25			

C Range: 0 - 360DEG  
 C Interval: 10.0DEG  
 Test Speed: HIGH  
 Temperature:25.3DEG  
 Operators:DAMIN  
 Test Date:2016-10-25

$\gamma$  Range: 0 - 180DEG  
 $\gamma$  Interval: 1.0DEG  
 Test System:EVERFINE GO-2000B\_V1 SYSTEM V2.0.351  
 Humidity:65.0%  
 Test Distance:4.950m [K=1.0000]  
 Remarks:

ISOCANDELA DIAGRAM

Test:U:24.00V I:0.2402A P:5.765W PF:1.000 Lamp Flux:436.313x1 lm		
NAME: LED Strip	TYPE:Indoor lighting	WEIGHT:25g
SPEC.:2016+5050 180LED	DIM.: 1000*14*1MM	SERIAL No.:201601025006
MFR.: Dilux	SUR.:1000*14mm	Shielding Angle:



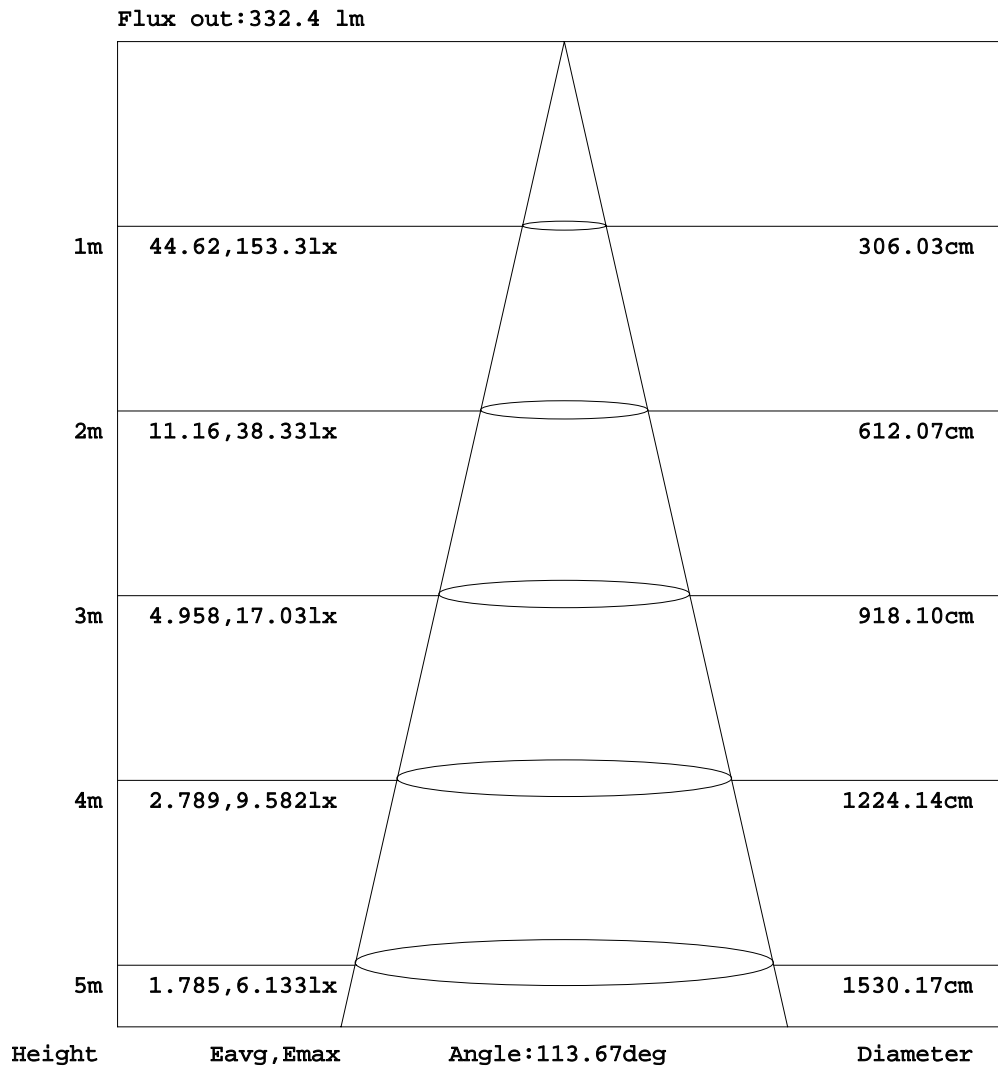
C Range: 0 - 360DEG  
 C Interval: 10.0DEG  
 Test Speed: HIGH  
 Temperature:25.3DEG  
 Operators:DAMIN  
 Test Date:2016-10-25

γ Range: 0 - 180DEG  
 γ Interval: 1.0DEG  
 Test System:EVERFINE GO-2000B\_V1 SYSTEM V2.0.351  
 Humidity:65.0%  
 Test Distance:4.950m [K=1.0000]  
 Remarks:



AAI Figure

Test:U:24.00V I:0.2402A P:5.765W PF:1.000 Lamp Flux:436.313x1 lm		
NAME: LED Strip	TYPE:Indoor lighting	WEIGHT:25g
SPEC.:2016+5050 180LED	DIM.: 1000*14*1MM	SERIAL No.:201601025006
MFR.: Dilux	SUR.:1000*14mm	Shielding Angle:



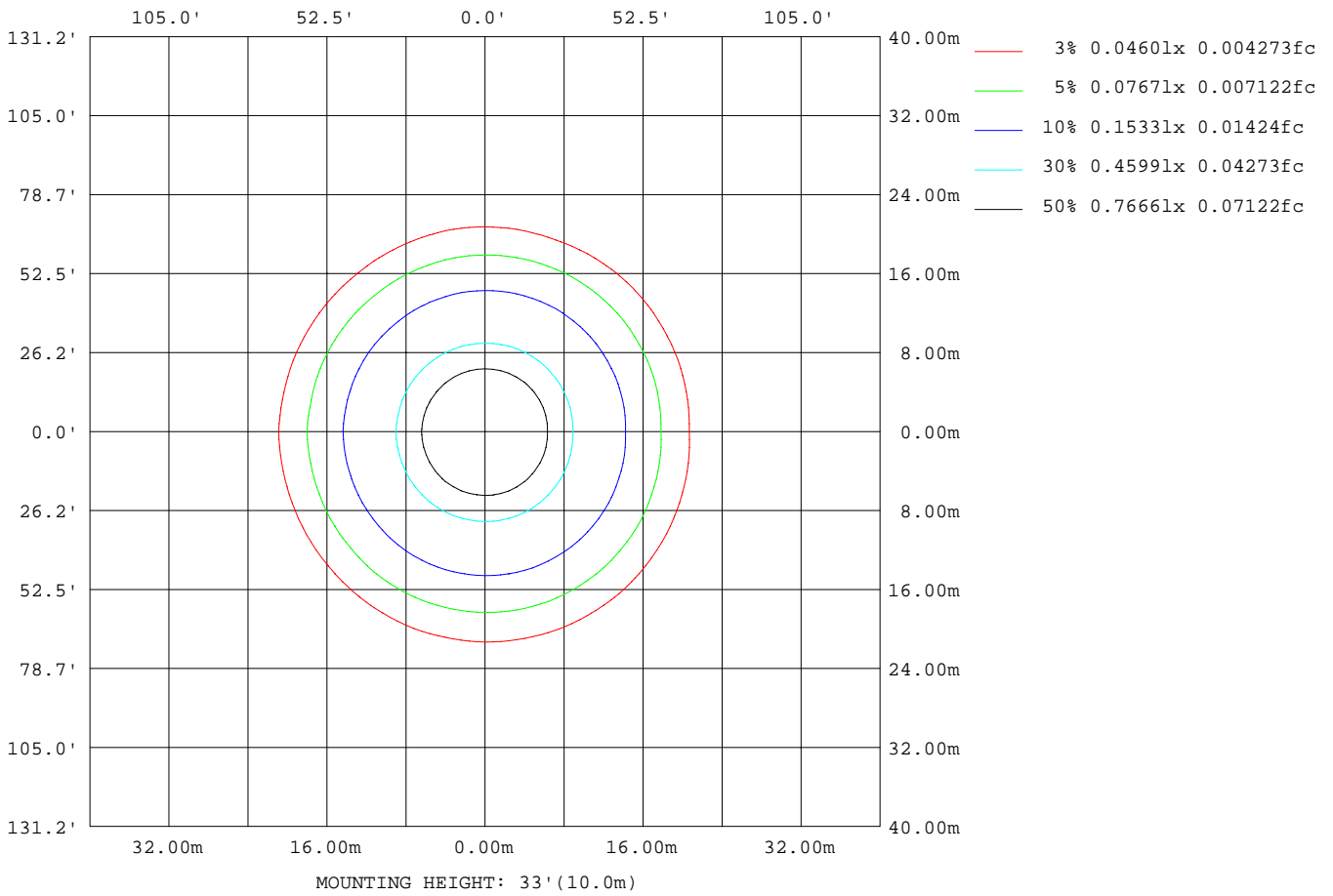
Note:The Curves indicate the illuminated area and the average illumination when the luminaire is at different distance.

C Range: 0 - 360DEG  
 C Interval: 10.0DEG  
 Test Speed: HIGH  
 Temperature:25.3DEG  
 Operators:DAMIN  
 Test Date:2016-10-25

γ Range: 0 - 180DEG  
 γ Interval: 1.0DEG  
 Test System:EVERFINE GO-2000B\_V1 SYSTEM V2.0.351  
 Humidity:65.0%  
 Test Distance:4.950m [K=1.0000]  
 Remarks:

ISOLUX DIAGRAM

Test:U:24.00V I:0.2402A P:5.765W PF:1.000 Lamp Flux:436.313x1 lm		
NAME: LED Strip	TYPE:Indoor lighting	WEIGHT:25g
SPEC.:2016+5050 180LED	DIM.: 1000*14*1MM	SERIAL No.:201601025006
MFR.: Dilux	SUR.:1000*14mm	Shielding Angle:



C Range: 0 - 360DEG  
 C Interval: 10.0DEG  
 Test Speed: HIGH  
 Temperature:25.3DEG  
 Operators:DAMIN  
 Test Date:2016-10-25

γ Range: 0 - 180DEG  
 γ Interval: 1.0DEG  
 Test System:EVERFINE GO-2000B\_V1 SYSTEM V2.0.351  
 Humidity:65.0%  
 Test Distance:4.950m [K=1.0000]  
 Remarks:

LED Avg.L Report

Test:U:24.00V I:0.2402A P:5.765W PF:1.000 Lamp Flux:436.313x1 lm		
NAME: LED Strip	TYPE:Indoor lighting	WEIGHT:25g
SPEC.:2016+5050 180LED	DIM.: 1000*14*1MM	SERIAL No.:201601025006
MFR.: Dilux	SUR.:1000*14mm	Shielding Angle:

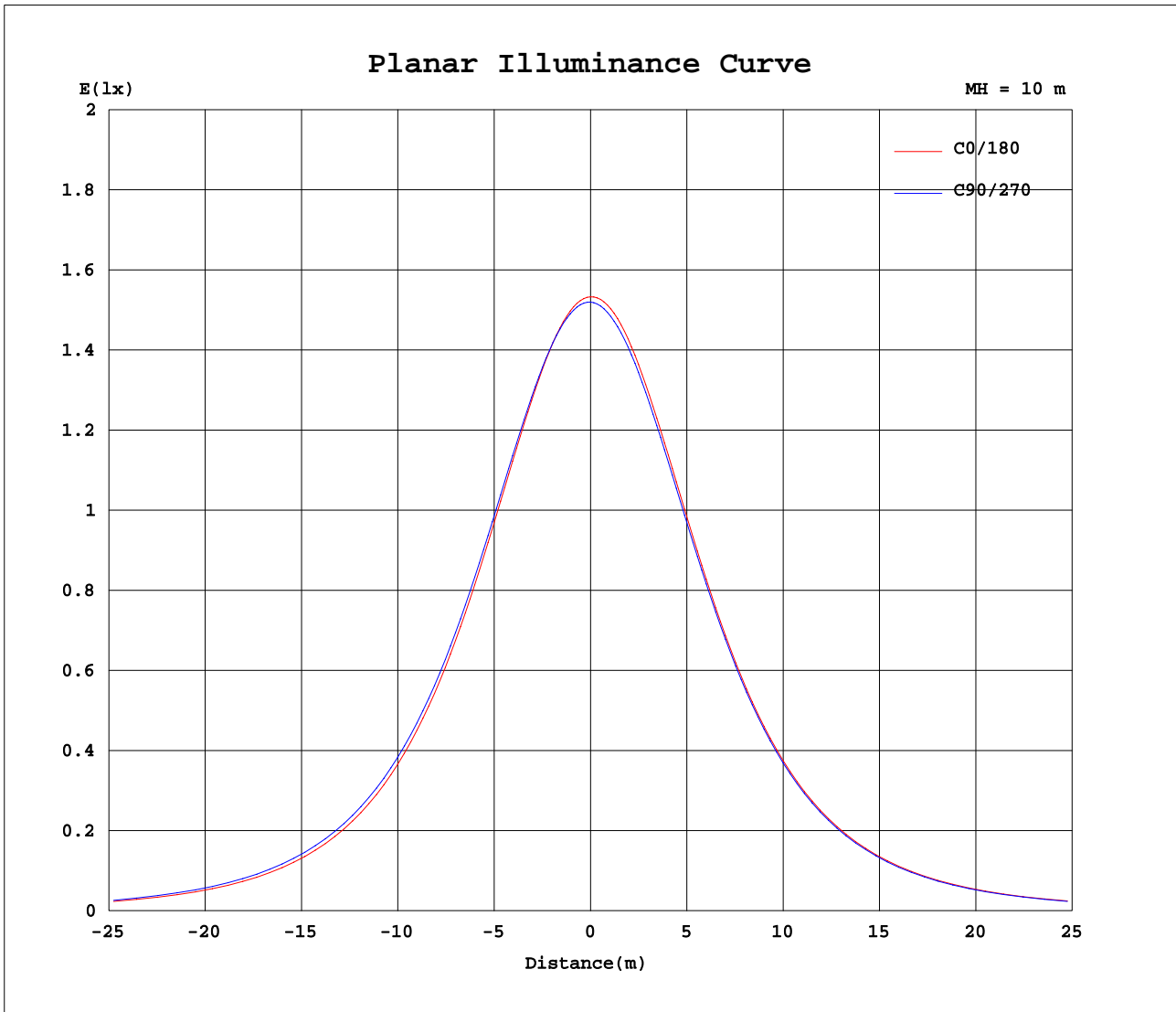
AvgL	cd/m2
L_0~180(65)av	9202
L_0~180(75)av	7160
L_0~180(85)av	1112
L_90~270(65)av	9591
L_90~270(75)av	4172
L_90~270(85)av	0
L_45(65)av	9411
L_45(75)av	7418
L_45(85)av	1794

Standard: GB/T 29293-2012

C Range: 0 - 360DEG  
 C Interval: 10.0DEG  
 Test Speed: HIGH  
 Temperature:25.3DEG  
 Operators:DAMIN  
 Test Date:2016-10-25

γ Range: 0 - 180DEG  
 γ Interval: 1.0DEG  
 Test System:EVERFINE GO-2000B\_V1 SYSTEM V2.0.351  
 Humidity:65.0%  
 Test Distance:4.950m [K=1.0000]  
 Remarks:

Planar Illuminance Curve



C Range: 0 - 360DEG  
 C Interval: 10.0DEG  
 Test Speed: HIGH  
 Temperature: 25.3DEG  
 Operators: DAMIN  
 Test Date: 2016-10-25

$\gamma$  Range: 0 - 180DEG  
 $\gamma$  Interval: 1.0DEG  
 Test System: EVERFINE GO-2000B\_V1 SYSTEM V2.0.351  
 Humidity: 65.0%  
 Test Distance: 4.950m [K=1.0000]  
 Remarks:

LUMINOUS DISTRIBUTION INTENSITY DATA

Test:U:24.00V I:0.2402A P:5.765W PF:1.000 Lamp Flux:436.313x1 lm		
NAME: LED Strip	TYPE:Indoor lighting	WEIGHT:25g
SPEC.:2016+5050 180LED	DIM.: 1000*14*1MM	SERIAL No.:201601025006
MFR.: Dilux	SUR.:1000*14mm	Shielding Angle:

Table--1

UNIT: cd

C(DEG) γ (DEG)	0	10	20	30	40	50	60	70	80	90	100	110	120	130	140	150	160	170	180
0	153	153	153	153	152	152	152	152	152	152	152	152	152	153	153	153	153	153	153
5	153	152	152	152	152	152	152	152	152	152	152	152	152	152	153	152	153	153	153
10	151	150	150	151	150	151	150	151	150	150	150	150	151	151	151	151	151	151	151
15	147	147	148	148	148	148	148	148	148	148	148	148	148	148	148	148	148	148	149
20	143	143	143	144	144	144	144	145	144	144	144	144	144	144	144	144	144	144	145
25	137	138	138	139	139	139	140	140	140	140	139	139	139	139	139	139	139	139	139
30	131	131	132	132	133	133	134	134	134	134	133	133	133	133	133	132	132	132	133
35	123	124	124	125	125	126	126	127	126	126	126	126	126	126	125	125	124	125	125
40	114	115	115	116	117	118	118	118	118	118	117	118	117	117	116	116	115	116	116
45	104	105	105	107	107	108	108	109	109	109	108	108	107	107	106	106	105	105	106
50	92.4	93.6	94.6	95.8	96.6	97.5	97.8	98.3	98.1	98.0	97.3	97.4	96.7	96.1	95.0	94.5	94.0	94.0	94.7
55	80.2	81.6	82.6	84.0	84.7	85.8	86.1	86.7	86.5	86.2	85.5	85.4	84.8	84.0	82.7	82.4	81.8	81.9	82.5
60	67.1	68.6	69.7	71.2	72.1	73.1	73.3	73.8	73.6	73.3	72.7	72.4	71.7	70.8	69.4	69.1	68.5	68.6	69.4
65	53.5	55.0	56.2	57.6	58.5	59.5	59.6	60.1	59.7	59.6	58.8	58.5	57.4	56.5	55.5	55.1	54.6	54.6	55.4
70	39.3	41.0	42.1	43.6	44.3	45.0	44.3	43.2	41.1	40.4	40.3	42.1	42.3	41.9	41.0	40.7	40.2	40.2	41.1
75	25.2	26.9	28.1	29.6	30.2	28.2	18.6	11.7	7.19	5.94	5.94	10.1	20.3	27.0	26.7	26.4	25.8	25.8	26.7
80	12.0	13.6	14.8	16.1	16.7	12.8	0.01	0.00	0.00	0.00	0.00	0.00	0.02	9.90	13.3	13.2	12.5	12.4	13.0
85	1.08	2.36	3.30	4.60	4.94	3.20	0.00	0.00	0.00	0.00	0.00	0.00	0.00	0.20	1.95	2.03	1.46	1.36	1.64
90	0.00	0.00	0.00	0.00	0.00	0.00	0.00	0.00	0.00	0.00	0.00	0.00	0.00	0.00	0.00	0.00	0.00	0.00	0.00
95	0.00	0.00	0.00	0.00	0.00	0.00	0.00	0.00	0.00	0.00	0.00	0.00	0.00	0.00	0.00	0.00	0.00	0.00	0.00
100	0.00	0.00	0.00	0.00	0.00	0.00	0.00	0.00	0.00	0.00	0.00	0.00	0.00	0.00	0.00	0.00	0.00	0.00	0.00
105	0.00	0.00	0.00	0.00	0.00	0.00	0.00	0.00	0.00	0.00	0.00	0.00	0.00	0.00	0.00	0.00	0.00	0.00	0.00
110	0.00	0.00	0.00	0.00	0.00	0.00	0.00	0.00	0.00	0.00	0.00	0.00	0.00	0.00	0.00	0.00	0.00	0.00	0.00
115	0.00	0.00	0.00	0.00	0.00	0.00	0.00	0.00	0.00	0.00	0.00	0.00	0.00	0.00	0.00	0.00	0.00	0.00	0.00
120	0.00	0.00	0.00	0.00	0.00	0.00	0.00	0.00	0.00	0.00	0.00	0.00	0.00	0.00	0.00	0.00	0.00	0.00	0.00
125	0.00	0.00	0.00	0.00	0.00	0.00	0.00	0.00	0.00	0.00	0.00	0.00	0.00	0.00	0.00	0.00	0.00	0.00	0.00
130	0.00	0.00	0.00	0.00	0.00	0.00	0.00	0.00	0.00	0.00	0.00	0.00	0.00	0.00	0.00	0.00	0.00	0.00	0.00
135	0.00	0.00	0.00	0.00	0.00	0.00	0.00	0.00	0.00	0.00	0.00	0.00	0.00	0.00	0.00	0.00	0.00	0.00	0.00
140	0.00	0.00	0.00	0.00	0.00	0.00	0.00	0.00	0.00	0.00	0.00	0.00	0.00	0.00	0.00	0.00	0.00	0.00	0.00
145	0.00	0.00	0.00	0.00	0.00	0.00	0.00	0.00	0.00	0.00	0.00	0.00	0.00	0.00	0.00	0.00	0.00	0.00	0.00
150	0.00	0.00	0.00	0.00	0.00	0.00	0.00	0.00	0.00	0.00	0.00	0.00	0.00	0.00	0.00	0.00	0.00	0.00	0.00
155	0.00	0.00	0.00	0.00	0.00	0.00	0.00	0.00	0.00	0.00	0.00	0.00	0.00	0.00	0.00	0.00	0.00	0.00	0.00
160	0.00	0.00	0.00	0.00	0.00	0.00	0.00	0.00	0.00	0.00	0.00	0.00	0.00	0.00	0.00	0.00	0.00	0.00	0.00
165	0.00	0.00	0.00	0.00	0.00	0.00	0.00	0.00	0.00	0.00	0.00	0.00	0.00	0.00	0.00	0.00	0.00	0.00	0.00
170	0.00	0.00	0.00	0.00	0.00	0.00	0.00	0.00	0.00	0.00	0.00	0.00	0.00	0.00	0.00	0.00	0.00	0.00	0.00
175	0.00	0.00	0.00	0.00	0.00	0.00	0.00	0.00	0.00	0.00	0.00	0.00	0.00	0.00	0.00	0.00	0.00	0.00	0.00
180	0.00	0.00	0.00	0.00	0.00	0.00	0.00	0.00	0.00	0.00	0.00	0.00	0.00	0.00	0.00	0.00	0.00	0.00	0.00

C Range: 0 - 360DEG  
 C Interval: 10.0DEG  
 Test Speed: HIGH  
 Temperature:25.3DEG  
 Operators:DAMIN  
 Test Date:2016-10-25

γ Range: 0 - 180DEG  
 γ Interval: 1.0DEG  
 Test System:EVERFINE GO-2000B\_V1 SYSTEM V2.0.351  
 Humidity:65.0%  
 Test Distance:4.950m [K=1.0000]  
 Remarks:

LUMINOUS DISTRIBUTION INTENSITY DATA

Test:U:24.00V I:0.2402A P:5.765W PF:1.000 Lamp Flux:436.313x1 lm		
NAME: LED Strip	TYPE:Indoor lighting	WEIGHT:25g
SPEC.:2016+5050 180LED	DIM.: 1000*14*1MM	SERIAL No.:201601025006
MFR.: Dilux	SUR.:1000*14mm	Shielding Angle:

Table--2

UNIT: cd

C( DEG) γ (DEG)	190	200	210	220	230	240	250	260	270	280	290	300	310	320	330	340	350		
0	153	153	153	152	152	152	152	152	152	152	152	152	153	153	153	153	153		
5	152	152	152	152	152	151	151	151	151	151	151	152	152	152	152	152	153		
10	151	150	150	150	150	150	149	149	149	149	150	150	150	150	150	150	151		
15	148	148	147	147	147	147	146	147	146	146	147	147	147	147	147	147	148		
20	144	143	143	143	143	142	142	142	142	142	143	143	143	143	143	143	143		
25	138	138	138	137	137	137	137	137	137	137	137	138	138	138	138	138	138		
30	132	131	131	131	131	131	131	131	131	131	131	131	132	132	131	131	131		
35	124	124	123	123	123	123	123	123	123	123	124	124	124	124	124	124	123		
40	115	115	114	114	114	115	114	114	114	115	115	115	115	115	115	115	114		
45	105	104	104	104	104	104	104	104	104	105	105	106	105	105	105	105	104		
50	93.3	93.2	92.8	92.9	92.4	92.8	92.6	93.1	93.1	93.6	93.9	94.5	94.2	94.3	93.6	93.6	93.0		
55	81.1	80.8	80.6	80.4	79.8	80.3	80.2	80.9	80.9	81.5	81.6	82.4	82.1	82.2	81.6	81.6	81.0		
60	67.9	67.7	67.1	66.9	66.4	66.8	67.0	67.9	67.9	68.2	68.4	69.0	68.9	69.2	68.7	68.6	68.0		
65	53.9	53.7	52.9	52.7	52.3	52.8	53.2	53.8	53.9	53.2	53.4	53.9	54.9	55.3	54.9	54.9	54.2		
70	39.6	39.3	38.5	38.2	37.9	38.6	39.0	39.6	38.7	39.3	39.5	39.9	39.8	41.0	40.8	40.7	40.2		
75	25.3	25.1	24.3	24.2	24.1	24.6	23.9	24.3	24.3	25.1	25.1	26.2	26.2	26.4	26.7	26.7	26.1		
80	11.9	12.0	11.4	11.4	11.2	11.1	11.0	11.2	10.9	11.2	12.1	13.2	13.2	13.5	13.6	13.5	12.8		
85	1.01	1.06	0.79	0.78	0.65	0.99	0.75	0.00	0.00	0.00	1.57	2.59	2.65	2.70	2.48	2.41	1.83		
90	0.00	0.00	0.00	0.00	0.00	0.00	0.00	0.00	0.00	0.00	0.00	0.00	0.00	0.00	0.00	0.00	0.00		
95	0.00	0.00	0.00	0.00	0.00	0.00	0.00	0.00	0.00	0.00	0.00	0.00	0.00	0.00	0.00	0.00	0.00		
100	0.00	0.00	0.00	0.00	0.00	0.00	0.00	0.00	0.00	0.00	0.00	0.00	0.00	0.00	0.00	0.00	0.00		
105	0.00	0.00	0.00	0.00	0.00	0.00	0.00	0.00	0.00	0.00	0.00	0.00	0.00	0.00	0.00	0.00	0.00		
110	0.00	0.00	0.00	0.00	0.00	0.00	0.00	0.00	0.00	0.00	0.00	0.00	0.00	0.00	0.00	0.00	0.00		
115	0.00	0.00	0.00	0.00	0.00	0.00	0.00	0.00	0.00	0.00	0.00	0.00	0.00	0.00	0.00	0.00	0.00		
120	0.00	0.00	0.00	0.00	0.00	0.00	0.00	0.00	0.00	0.00	0.00	0.00	0.00	0.00	0.00	0.00	0.00		
125	0.00	0.00	0.00	0.00	0.00	0.00	0.00	0.00	0.00	0.00	0.00	0.00	0.00	0.00	0.00	0.00	0.00		
130	0.00	0.00	0.00	0.00	0.00	0.00	0.00	0.00	0.00	0.00	0.00	0.00	0.00	0.00	0.00	0.00	0.00		
135	0.00	0.00	0.00	0.00	0.00	0.00	0.00	0.00	0.00	0.00	0.00	0.00	0.00	0.00	0.00	0.00	0.00		
140	0.00	0.00	0.00	0.00	0.00	0.00	0.00	0.00	0.00	0.00	0.00	0.00	0.00	0.00	0.00	0.00	0.00		
145	0.00	0.00	0.00	0.00	0.00	0.00	0.00	0.00	0.00	0.00	0.00	0.00	0.00	0.00	0.00	0.00	0.00		
150	0.00	0.00	0.00	0.00	0.00	0.00	0.00	0.00	0.00	0.00	0.00	0.00	0.00	0.00	0.00	0.00	0.00		
155	0.00	0.00	0.00	0.00	0.00	0.00	0.00	0.00	0.00	0.00	0.00	0.00	0.00	0.00	0.00	0.00	0.00		
160	0.00	0.00	0.00	0.00	0.00	0.00	0.00	0.00	0.00	0.00	0.00	0.00	0.00	0.00	0.00	0.00	0.00		
165	0.00	0.00	0.00	0.00	0.00	0.00	0.00	0.00	0.00	0.00	0.00	0.00	0.00	0.00	0.00	0.00	0.00		
170	0.00	0.00	0.00	0.00	0.00	0.00	0.00	0.00	0.00	0.00	0.00	0.00	0.00	0.00	0.00	0.00	0.00		
175	0.00	0.00	0.00	0.00	0.00	0.00	0.00	0.00	0.00	0.00	0.00	0.00	0.00	0.00	0.00	0.00	0.00		
180	0.00	0.00	0.00	0.00	0.00	0.00	0.00	0.00	0.00	0.00	0.00	0.00	0.00	0.00	0.00	0.00	0.00		

C Range: 0 - 360DEG  
 C Interval: 10.0DEG  
 Test Speed: HIGH  
 Temperature:25.3DEG  
 Operators:DAMIN  
 Test Date:2016-10-25

γ Range: 0 - 180DEG  
 γ Interval: 1.0DEG  
 Test System:EVERFINE GO-2000B\_V1 SYSTEM V2.0.351  
 Humidity:65.0%  
 Test Distance:4.950m [K=1.0000]  
 Remarks: