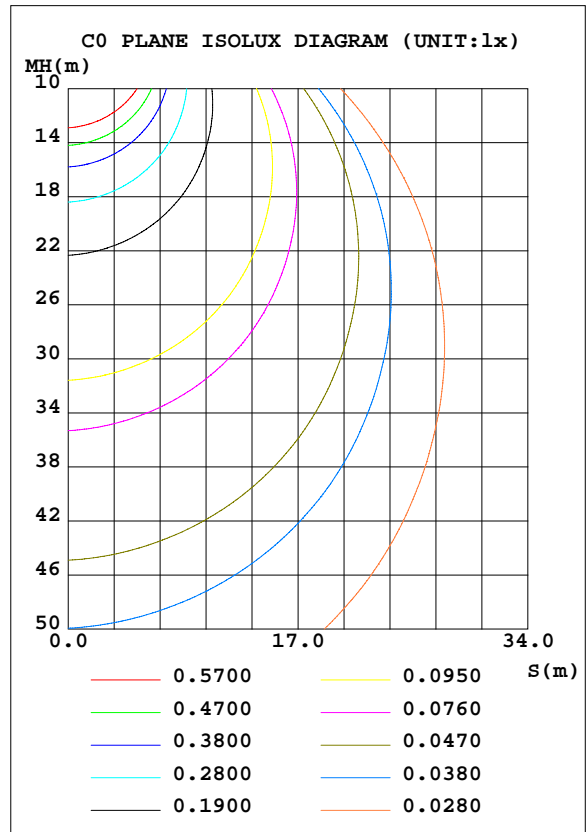
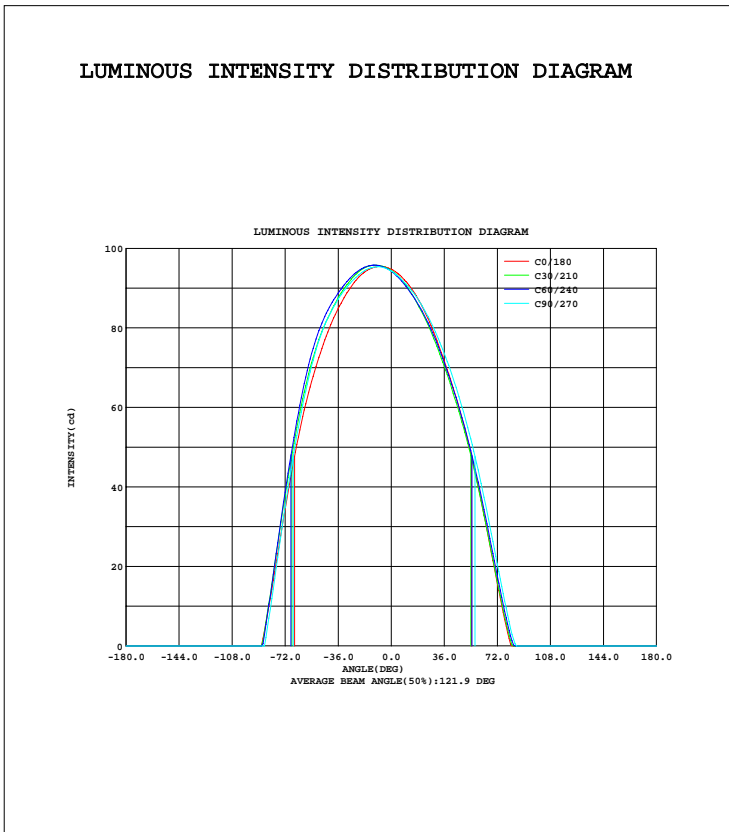


LUMINAIRE PHOTOMETRIC TEST REPORT

Test:U:24.00V I:0.1909A P:4.583W PF:1.000 Lamp Flux:297.72x1 lm		
NAME: LED Strip	TYPE:Indoor lighting	WEIGHT:25g
SPEC.:2016+5050 180LED	DIM.: 1000*14*1MM	SERIAL No.:201601025003
MFR.: Dilux	SUR.:1000*14mm	Shielding Angle:

DATA OF LAMP		PHOTOMETRIC DATA Eff: 64.96 lm/W			
MODEL	FLS103T58FD180B-24(WCP)-UR	Imax(cd)	95.96	S/MH(C0/180)	1.40
NOMINAL POWER(W)	4.58	LOR(%)	100.0	S/MH(C90/270)	1.43
RATED VOLTAGE(V)	24	TOTAL FLUX(lm)	297.72	$\eta$ UP, DN(C0-180)	0.0,45.2
NOMINAL FLUX(lm)	297.72	CIE CLASS	DIRECT	$\eta$ UP, DN(C180-360)	0.0,54.8
LAMPS INSIDE	1	$\eta$ up(%)	0.0	CIBSE SHR NOM	1.50
TEST VOLTAGE(V)	24	$\eta$ down(%)	100.0	CIBSE SHR MAX	1.50



C Range: 0 - 360DEG  
 C Interval: 10.0DEG  
 Test Speed: HIGH  
 Temperature:25.3DEG  
 Operators:DAMIN  
 Test Date:2016-10-25

$\gamma$  Range: 0 - 180DEG  
 $\gamma$  Interval: 1.0DEG  
 Test System:EVERFINE GO-2000B\_V1 SYSTEM V2.0.351  
 Humidity:65.0%  
 Test Distance:4.950m [K=1.0000]  
 Remarks:

ZONAL FLUX DIAGRAM

ZONAL FLUX DIAGRAM:

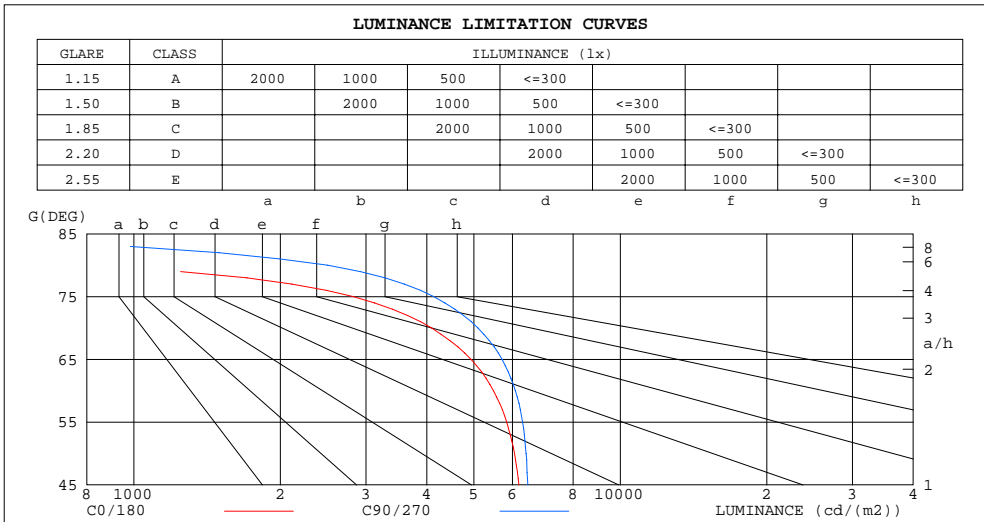
γ	C0	C45	C90	C135	C180	C225	C270	C315	γ	Φ zone	Φ total	Φlum,lamp
10	91.65	90.51	91.05	93.14	95.36	95.85	95.36	94.11	0- 10	8.968	8.968	3.01,3.01
20	86.11	84.55	86.14	89.37	93.47	94.95	93.92	90.96	10- 20	25.98	34.95	11.7,11.7
30	77.82	76.61	78.97	83.58	88.82	91.45	90.31	85.34	20- 30	40.28	75.22	25.3,25.3
40	67.29	66.41	69.56	75.43	81.68	85.79	84.61	77.59	30- 40	50.30	125.5	42.2,42.2
50	54.53	54.25	57.59	64.62	71.44	77.71	75.71	67.17	40- 50	54.84	180.4	60.6,60.6
60	38.38	38.92	42.59	49.68	57.70	63.79	60.64	51.76	50- 60	52.21	232.6	78.1,78.1
70	19.59	20.54	24.40	30.33	38.61	43.53	39.73	31.05	60- 70	40.60	273.2	91.8,91.8
80	1.839	3.299	6.084	9.502	16.47	18.39	14.37	8.527	70- 80	21.42	294.6	98.9,98.9
90	0	0	0	0	0	0	0	0	80- 90	3.131	297.7	100,100
100	0	0	0	0	0	0	0	0	90-100	0	297.7	100,100
110	0	0	0	0	0	0	0	0	100-110	0	297.7	100,100
120	0	0	0	0	0	0	0	0	110-120	0	297.7	100,100
130	0	0	0	0	0	0	0	0	120-130	0	297.7	100,100
140	0	0	0	0	0	0	0	0	130-140	0	297.7	100,100
150	0	0	0	0	0	0	0	0	140-150	0	297.7	100,100
160	0	0	0	0	0	0	0	0	150-160	0	297.7	100,100
170	0	0	0	0	0	0	0	0	160-170	0	297.7	100,100
180	0	0	0	0	0	0	0	0	170-180	0	297.7	100,100
DEG	LUMINOUS INTENSITY:cd									UNIT:lm		

C Range: 0 - 360DEG  
 C Interval: 10.0DEG  
 Test Speed: HIGH  
 Temperature:25.3DEG  
 Operators:DAMIN  
 Test Date:2016-10-25

γ Range: 0 - 180DEG  
 γ Interval: 1.0DEG  
 Test System:EVERFINE GO-2000B\_V1 SYSTEM V2.0.351  
 Humidity:65.0%  
 Test Distance:4.950m [K=1.0000]  
 Remarks:

LUMINANCE LIMITATION CURVES

Test:U:24.00V I:0.1909A P:4.583W PF:1.000 Lamp Flux:297.72x1 lm		
NAME: LED Strip	TYPE:Indoor lighting	WEIGHT:25g
SPEC.:2016+5050 180LED	DIM.: 1000*14*1MM	SERIAL No.:201601025003
MFR.: Dilux	SUR.:1000*14mm	Shielding Angle:



LUMINANCE cd/(m2)		
G( DEG)	C0/180	C90/270
85	0	0
80	757	2503
75	2824	4134
70	4092	5095
65	4931	5711
60	5482	6084
55	5838	6297
50	6059	6400
45	6187	6453

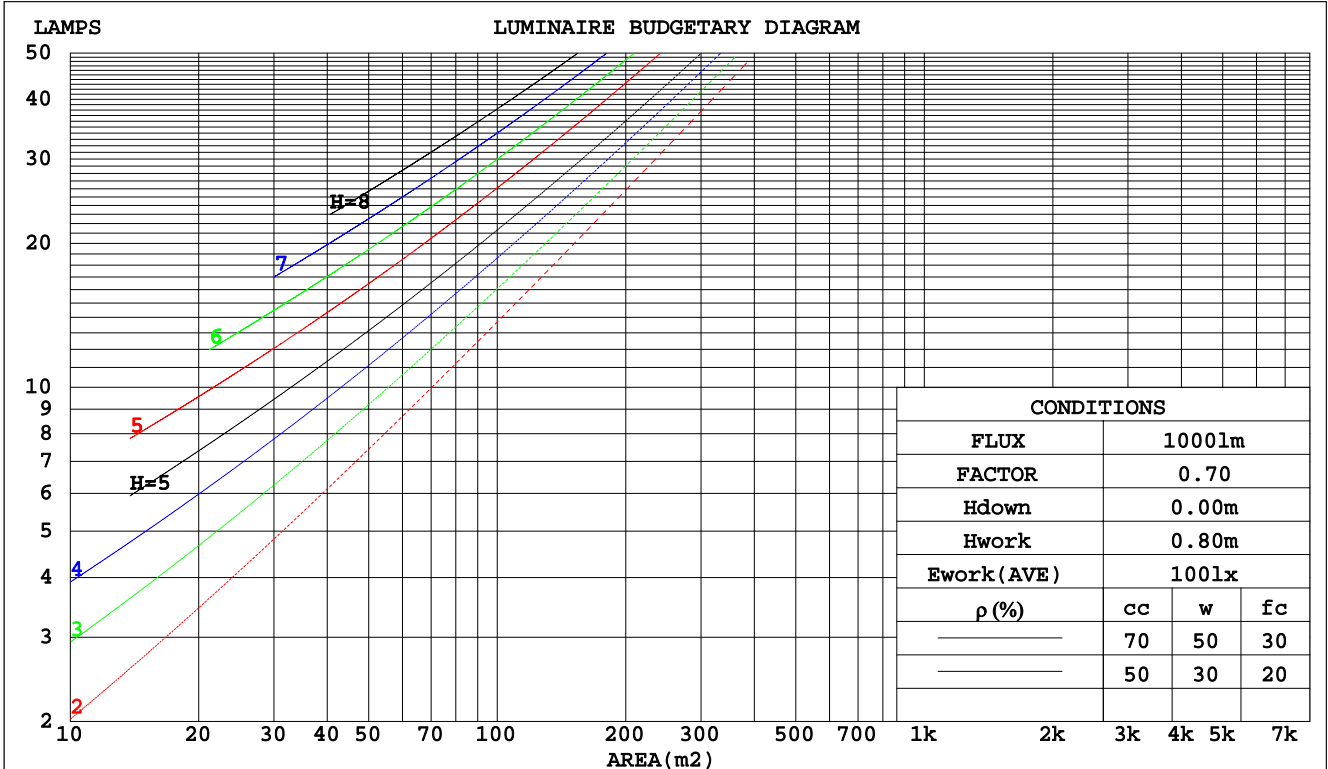
C Range: 0 - 360DEG  
 C Interval: 10.0DEG  
 Test Speed: HIGH  
 Temperature:25.3DEG  
 Operators:DAMIN  
 Test Date:2016-10-25

γ Range: 0 - 180DEG  
 γ Interval: 1.0DEG  
 Test System:EVERFINE GO-2000B\_V1 SYSTEM V2.0.351  
 Humidity:65.0%  
 Test Distance:4.950m [K=1.0000]  
 Remarks:

CU AND LUMINAIRE BUDGETARY ESTIMATE DIAGRAM

Test:U:24.00V I:0.1909A P:4.583W PF:1.000 Lamp Flux:297.72x1 lm		
NAME: LED Strip	TYPE:Indoor lighting	WEIGHT:25g
SPEC.:2016+5050 180LED	DIM.: 1000*14*1MM	SERIAL No.:201601025003
MFR.: Dilux	SUR.:1000*14mm	Shielding Angle:

pcc	80%			70%			50%			30%			10%			0
pw	50%	30%	10%	50%	30%	10%	50%	30%	10%	50%	30%	10%	50%	30%	10%	0
pfc	20%			20%			20%			20%			20%			0
RCR	RCR:Room Cavity Ratio															
	Coefficients of Utilization(CU)															
0.0	1.19	1.19	1.19	1.16	1.16	1.16	1.11	1.11	1.11	1.06	1.06	1.06	1.02	1.02	1.02	1.00
1.0	1.04	.00	.96	1.02	.98	.94	.97	.94	.91	.94	.91	.88	.90	.88	.86	.84
2.0	.90	.83	.77	.88	.82	.76	.85	.79	.75	.81	.77	.73	.78	.75	.71	.69
3.0	.79	.70	.64	.77	.69	.63	.74	.68	.62	.71	.66	.61	.69	.64	.60	.58
4.0	.69	.60	.54	.68	.60	.53	.66	.58	.52	.63	.57	.52	.61	.56	.51	.49
5.0	.62	.53	.46	.61	.52	.46	.59	.51	.45	.57	.50	.45	.55	.49	.44	.42
6.0	.55	.46	.40	.54	.46	.40	.53	.45	.39	.51	.44	.39	.49	.43	.38	.36
7.0	.50	.41	.35	.49	.41	.35	.48	.40	.34	.46	.39	.34	.45	.39	.34	.32
8.0	.46	.37	.31	.45	.37	.31	.44	.36	.31	.42	.35	.30	.41	.35	.30	.28
9.0	.42	.33	.28	.41	.33	.28	.40	.33	.27	.39	.32	.27	.38	.32	.27	.25
10.0	.38	.30	.25	.38	.30	.25	.37	.30	.25	.36	.29	.25	.35	.29	.25	.23



C Range: 0 - 360DEG  
 C Interval: 10.0DEG  
 Test Speed: HIGH  
 Temperature:25.3DEG  
 Operators:DAMIN  
 Test Date:2016-10-25

γ Range: 0 - 180DEG  
 γ Interval: 1.0DEG  
 Test System:EVERFINE GO-2000B\_V1 SYSTEM V2.0.351  
 Humidity:65.0%  
 Test Distance:4.950m [K=1.0000]  
 Remarks:

WEC AND CCEC

Test:U:24.00V I:0.1909A P:4.583W PF:1.000 Lamp Flux:297.72x1 lm		
NAME: LED Strip	TYPE:Indoor lighting	WEIGHT:25g
SPEC.:2016+5050 180LED	DIM.: 1000*14*1MM	SERIAL No.:201601025003
MFR.: Dilux	SUR.:1000*14mm	Shielding Angle:

ρcc	80%			70%			50%			30%			10%			0
ρw	50%	30%	10%	50%	30%	10%	50%	30%	10%	50%	30%	10%	50%	30%	10%	0
ρfc	20%			20%			20%			20%			20%			0
RCR	RCR:Room Cavity Ratio						Wall Exitance Coefficients(WEC)									
0.0																
1.0	.308	.175	.055	.301	.172	.055	.288	.165	.053	.275	.159	.051	.264	.153	.049	
2.0	.294	.161	.049	.288	.159	.049	.276	.154	.048	.265	.149	.047	.255	.144	.046	
3.0	.274	.146	.044	.268	.144	.043	.258	.140	.042	.248	.136	.042	.239	.132	.041	
4.0	.253	.131	.039	.248	.130	.038	.239	.127	.038	.230	.124	.037	.222	.121	.037	
5.0	.234	.119	.035	.230	.118	.034	.221	.115	.034	.214	.113	.034	.207	.110	.033	
6.0	.217	.109	.031	.213	.108	.031	.206	.105	.031	.199	.103	.030	.193	.101	.030	
7.0	.202	.100	.028	.198	.099	.028	.192	.097	.028	.186	.095	.028	.180	.094	.027	
8.0	.188	.092	.026	.185	.091	.026	.179	.090	.026	.174	.088	.025	.169	.087	.025	
9.0	.176	.085	.024	.174	.085	.024	.168	.083	.024	.163	.082	.023	.159	.081	.023	
10.0	.166	.079	.022	.163	.079	.022	.159	.078	.022	.154	.077	.022	.150	.075	.022	

ρcc	80%			70%			50%			30%			10%			0
ρw	50%	30%	10%	50%	30%	10%	50%	30%	10%	50%	30%	10%	50%	30%	10%	0
ρfc	20%			20%			20%			20%			20%			0
RCR	RCR:Room Cavity Ratio						Ceiling Cavity Exitance Coefficients(CCEC)									
0.0	.190	.190	.190	.163	.163	.163	.111	.111	.111	.064	.064	.064	.020	.020	.020	
1.0	.180	.156	.135	.154	.134	.116	.105	.092	.080	.061	.053	.047	.019	.017	.015	
2.0	.173	.132	.098	.148	.114	.084	.101	.079	.059	.058	.046	.035	.019	.015	.011	
3.0	.165	.114	.074	.142	.099	.064	.097	.069	.045	.056	.040	.026	.018	.013	.009	
4.0	.158	.101	.058	.135	.087	.050	.093	.061	.035	.054	.036	.021	.017	.012	.007	
5.0	.150	.091	.047	.129	.078	.041	.089	.055	.029	.052	.032	.017	.017	.011	.006	
6.0	.143	.082	.039	.123	.071	.034	.085	.050	.024	.049	.029	.014	.016	.010	.005	
7.0	.137	.076	.033	.117	.065	.029	.081	.046	.020	.047	.027	.012	.015	.009	.004	
8.0	.130	.070	.028	.112	.061	.025	.077	.042	.018	.045	.025	.010	.015	.008	.003	
9.0	.124	.065	.025	.107	.056	.022	.074	.040	.015	.043	.023	.009	.014	.008	.003	
10.0	.118	.061	.022	.102	.053	.019	.071	.037	.014	.041	.022	.008	.013	.007	.003	

C Range: 0 - 360DEG  
 C Interval: 10.0DEG  
 Test Speed: HIGH  
 Temperature:25.3DEG  
 Operators:DAMIN  
 Test Date:2016-10-25

γ Range: 0 - 180DEG  
 γ Interval: 1.0DEG  
 Test System:EVERFINE GO-2000B\_V1 SYSTEM V2.0.351  
 Humidity:65.0%  
 Test Distance:4.950m [K=1.0000]  
 Remarks:

UGR(Unified Glare Rating) Table

Test:U:24.00V I:0.1909A P:4.583W PF:1.000 Lamp Flux:297.72x1 lm		
NAME: LED Strip	TYPE:Indoor lighting	WEIGHT:25g
SPEC.:2016+5050 180LED	DIM.: 1000*14*1MM	SERIAL No.:201601025003
MFR.: Dilux	SUR.:1000*14mm	Shielding Angle:

ceiling/cavity	0.7	0.7	0.5	0.5	0.3	0.7	0.7	0.5	0.5	0.3
walls	0.5	0.3	0.5	0.3	0.3	0.5	0.3	0.5	0.3	0.3
working plane	0.2	0.2	0.2	0.2	0.2	0.2	0.2	0.2	0.2	0.2
Room dimensions	Viewed crosswise					Viewed endwise				
x = 2H y = 2H	18.3	19.9	18.6	20.1	20.3	18.7	20.3	19.0	20.5	20.7
3H	19.4	20.9	19.7	21.1	21.3	20.0	21.5	20.3	21.7	22.0
4H	19.7	21.0	20.0	21.3	21.6	20.5	21.8	20.8	22.1	22.3
6H	19.7	21.0	20.0	21.2	21.5	20.6	21.9	20.9	22.2	22.4
8H	19.6	20.9	20.0	21.1	21.4	20.6	21.8	20.9	22.1	22.4
12H	19.6	20.8	19.9	21.1	21.4	20.5	21.7	20.9	22.0	22.3
4H 2H	18.9	20.2	19.2	20.5	20.7	19.2	20.5	19.5	20.8	21.1
3H	20.1	21.3	20.5	21.6	21.9	20.6	21.8	21.0	22.1	22.4
4H	20.4	21.5	20.8	21.8	22.2	21.1	22.2	21.5	22.5	22.9
6H	20.5	21.4	20.9	21.8	22.1	21.3	22.3	21.7	22.6	23.0
8H	20.4	21.3	20.8	21.7	22.1	21.3	22.2	21.7	22.6	23.0
12H	20.4	21.2	20.8	21.6	22.0	21.3	22.1	21.7	22.5	22.9
8H 4H	20.5	21.4	20.9	21.8	22.2	21.2	22.1	21.6	22.5	22.8
6H	20.6	21.3	21.0	21.7	22.2	21.4	22.2	21.9	22.6	23.0
8H	20.6	21.2	21.0	21.6	22.1	21.4	22.1	21.9	22.5	23.0
12H	20.5	21.1	21.0	21.5	22.0	21.4	22.0	21.9	22.4	22.9
12H 4H	20.5	21.3	20.9	21.7	22.1	21.1	22.0	21.6	22.4	22.8
6H	20.6	21.2	21.0	21.6	22.1	21.4	22.1	21.9	22.5	22.9
8H	20.5	21.1	21.0	21.5	22.0	21.4	22.0	21.9	22.4	22.9
Variations with the observer position at spacings:										
S = 1.0H	+ 0.2 / - 0.3					+ 0.2 / - 0.2				
1.5H	+ 0.2 / - 0.4					+ 0.2 / - 0.3				
2.0H	+ 0.4 / - 0.4					+ 0.4 / - 0.5				

CIE Pub.117 Corrected 297.7 lm Total Lamp Luminous Flux. (8log(F/F0) = -4.2)

C Range: 0 - 360DEG  
 C Interval: 10.0DEG  
 Test Speed: HIGH  
 Temperature:25.3DEG  
 Operators:DAMIN  
 Test Date:2016-10-25

γ Range: 0 - 180DEG  
 γ Interval: 1.0DEG  
 Test System:EVERFINE GO-2000B\_V1 SYSTEM V2.0.351  
 Humidity:65.0%  
 Test Distance:4.950m [K=1.0000]  
 Remarks:

UTILIZATION FACTORS TABLE

Test:U:24.00V I:0.1909A P:4.583W PF:1.000 Lamp Flux:297.72x1 lm		
NAME: LED Strip	TYPE:Indoor lighting	WEIGHT:25g
SPEC.:2016+5050 180LED	DIM.: 1000*14*1MM	SERIAL No.:201601025003
MFR.: Dilux	SUR.:1000*14mm	Shielding Angle:

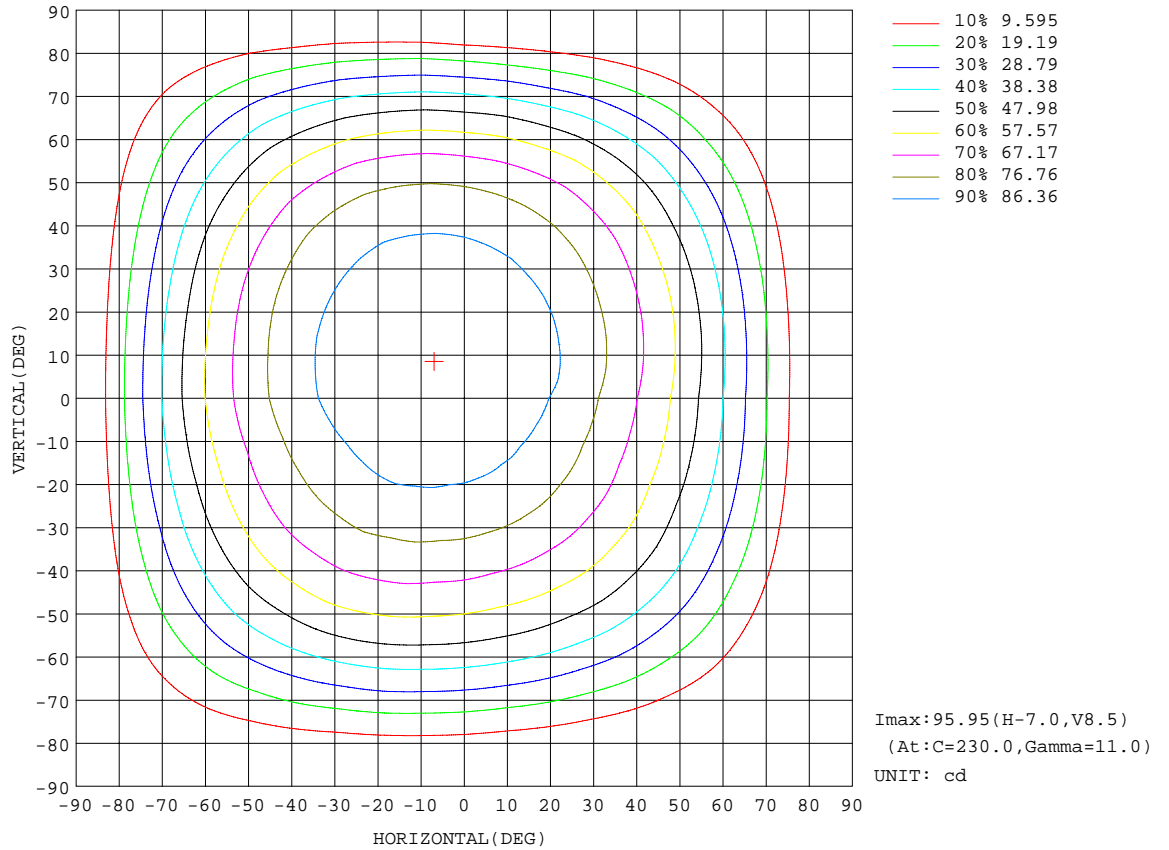
REFLECTANCE										
Ceiling	0.8	0.8	0.8	0.7	0.7	0.7	0.5	0.5	0.5	0
Walls	0.7	0.5	0.3	0.7	0.5	0.3	0.7	0.5	0.3	0
Working plane	0.2	0.2	0.2	0.2	0.2	0.2	0.2	0.2	0.2	0
ROOM INDEX	UTILIZATION FACTORS(PERCENT) $k(RI) \times RCR = 5$									
k = 0.60	56	44	37	55	44	37	54	43	37	30
0.80	66	54	47	65	54	47	63	53	46	39
1.00	75	63	56	74	63	56	71	64	55	48
1.25	82	71	64	81	71	64	78	69	63	55
1.50	87	77	70	86	76	70	83	75	69	61
2.00	95	86	79	93	85	78	89	82	77	69
2.50	99	91	85	97	89	84	93	87	82	73
3.00	102	95	90	100	94	88	96	91	86	78
4.00	106	100	96	104	99	94	100	95	92	83
5.00	109	104	100	106	102	98	102	98	95	86
ROOM INDEX	UF(total)									Direct
According to DIN EN 13032-2 2004			Suspended				SHRNOM = 1.25			

C Range: 0 - 360DEG  
 C Interval: 10.0DEG  
 Test Speed: HIGH  
 Temperature:25.3DEG  
 Operators:DAMIN  
 Test Date:2016-10-25

$\gamma$  Range: 0 - 180DEG  
 $\gamma$  Interval: 1.0DEG  
 Test System:EVERFINE GO-2000B\_V1 SYSTEM V2.0.351  
 Humidity:65.0%  
 Test Distance:4.950m [K=1.0000]  
 Remarks:

ISOCANDELA DIAGRAM

Test:U:24.00V I:0.1909A P:4.583W PF:1.000 Lamp Flux:297.72x1 lm		
NAME: LED Strip	TYPE:Indoor lighting	WEIGHT:25g
SPEC.:2016+5050 180LED	DIM.: 1000*14*1MM	SERIAL No.:201601025003
MFR.: Dilux	SUR.:1000*14mm	Shielding Angle:



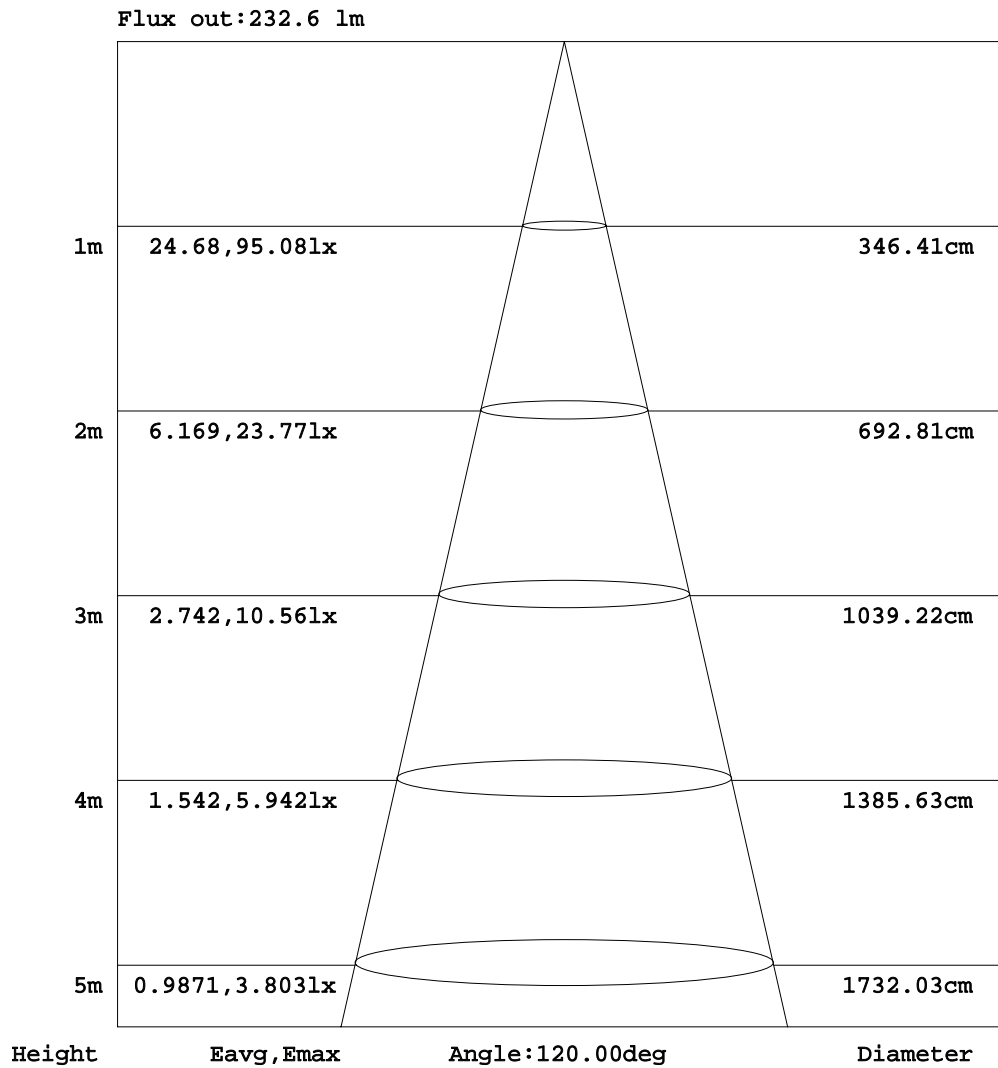
C Range: 0 - 360DEG  
 C Interval: 10.0DEG  
 Test Speed: HIGH  
 Temperature: 25.3DEG  
 Operators: DAMIN  
 Test Date: 2016-10-25

γ Range: 0 - 180DEG  
 γ Interval: 1.0DEG  
 Test System: EVERFINE GO-2000B\_V1 SYSTEM V2.0.351  
 Humidity: 65.0%  
 Test Distance: 4.950m [K=1.0000]  
 Remarks:



AAI Figure

Test:U:24.00V I:0.1909A P:4.583W PF:1.000 Lamp Flux:297.72x1 lm		
NAME: LED Strip	TYPE:Indoor lighting	WEIGHT:25g
SPEC.:2016+5050 180LED	DIM.: 1000*14*1MM	SERIAL No.:201601025003
MFR.: Dilux	SUR.:1000*14mm	Shielding Angle:



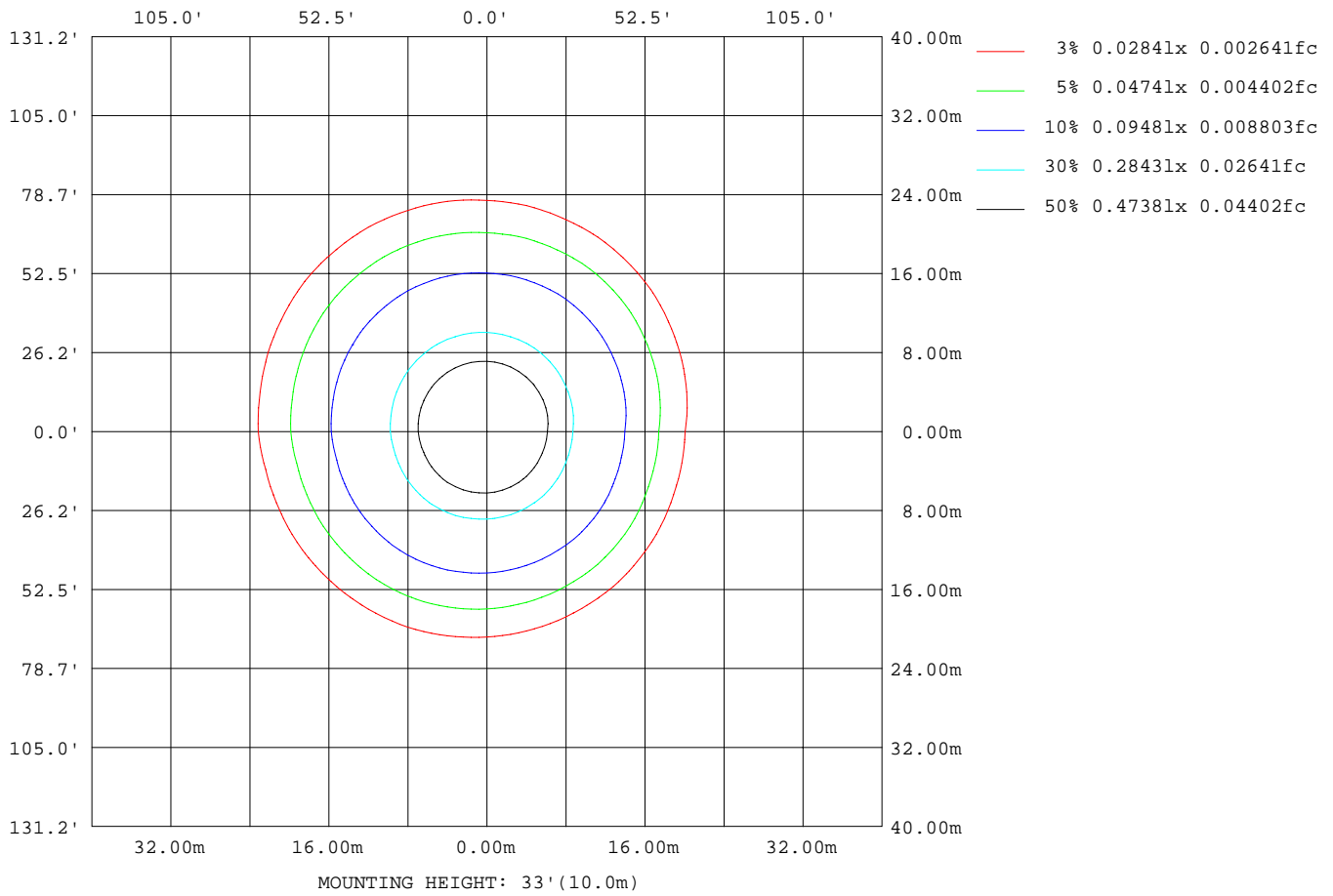
Note:The Curves indicate the illuminated area and the average illumination when the luminaire is at different distance.

C Range: 0 - 360DEG  
 C Interval: 10.0DEG  
 Test Speed: HIGH  
 Temperature:25.3DEG  
 Operators:DAMIN  
 Test Date:2016-10-25

γ Range: 0 - 180DEG  
 γ Interval: 1.0DEG  
 Test System:EVERFINE GO-2000B\_V1 SYSTEM V2.0.351  
 Humidity:65.0%  
 Test Distance:4.950m [K=1.0000]  
 Remarks:

ISOLUX DIAGRAM

Test:U:24.00V I:0.1909A P:4.583W PF:1.000 Lamp Flux:297.72x1 lm		
NAME: LED Strip	TYPE:Indoor lighting	WEIGHT:25g
SPEC.:2016+5050 180LED	DIM.: 1000*14*1MM	SERIAL No.:201601025003
MFR.: Dilux	SUR.:1000*14mm	Shielding Angle:



C Range: 0 - 360DEG  
 C Interval: 10.0DEG  
 Test Speed: HIGH  
 Temperature:25.3DEG  
 Operators:DAMIN  
 Test Date:2016-10-25

γ Range: 0 - 180DEG  
 γ Interval: 1.0DEG  
 Test System:EVERFINE GO-2000B\_V1 SYSTEM V2.0.351  
 Humidity:65.0%  
 Test Distance:4.950m [K=1.0000]  
 Remarks:

LED Avg.L Report

Test:U:24.00V I:0.1909A P:4.583W PF:1.000 Lamp Flux:297.72x1 lm		
NAME: LED Strip	TYPE:Indoor lighting	WEIGHT:25g
SPEC.:2016+5050 180LED	DIM.: 1000*14*1MM	SERIAL No.:201601025003
MFR.: Dilux	SUR.:1000*14mm	Shielding Angle:

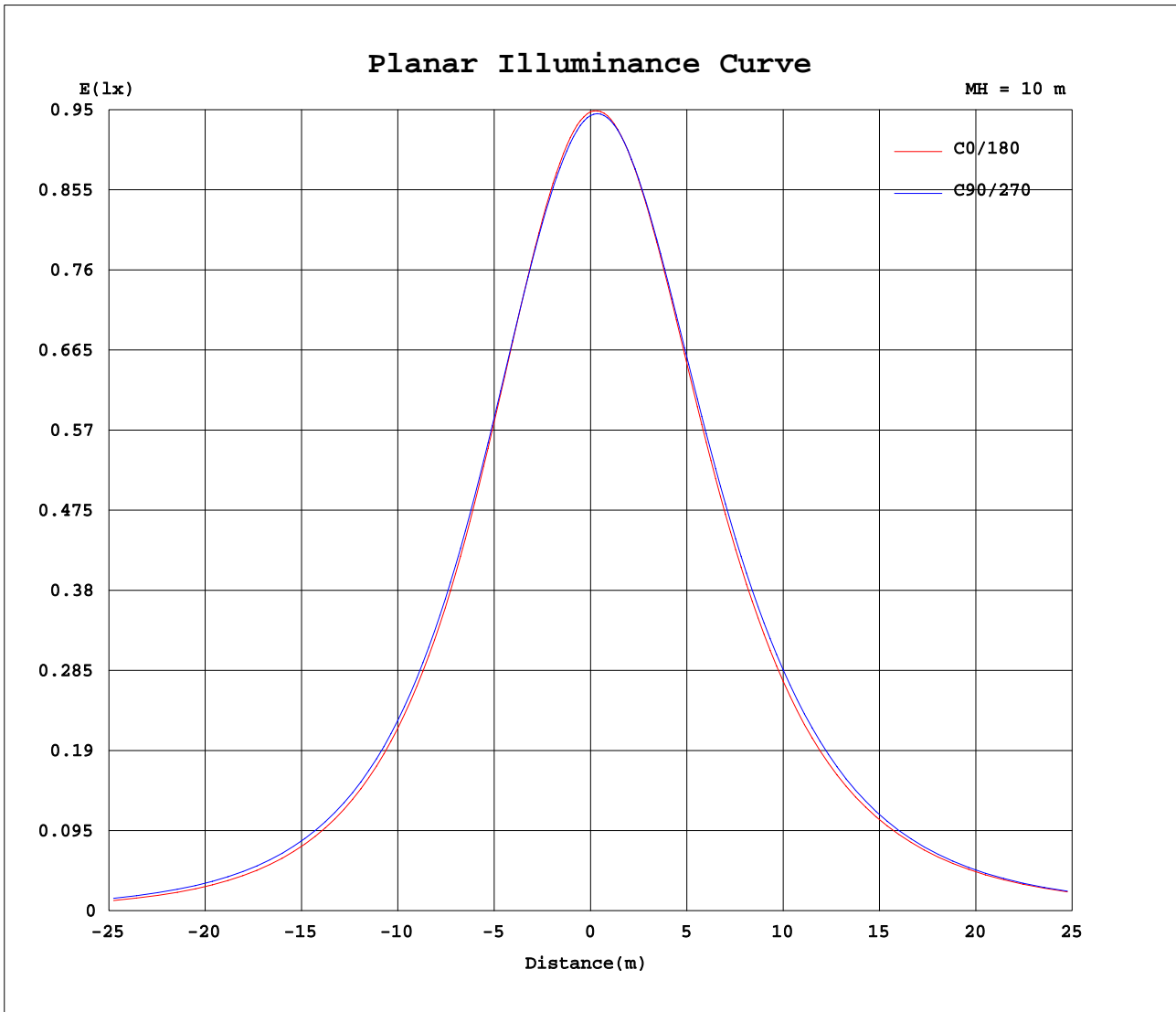
AvgL	cd/m2
L_0~180(65)av	6587
L_0~180(75)av	5239
L_0~180(85)av	2377
L_90~270(65)av	7150
L_90~270(75)av	5834
L_90~270(85)av	857
L_45(65)av	7048
L_45(75)av	5685
L_45(85)av	1239

Standard: GB/T 29293-2012

C Range: 0 - 360DEG  
 C Interval: 10.0DEG  
 Test Speed: HIGH  
 Temperature:25.3DEG  
 Operators:DAMIN  
 Test Date:2016-10-25

γ Range: 0 - 180DEG  
 γ Interval: 1.0DEG  
 Test System:EVERFINE GO-2000B\_V1 SYSTEM V2.0.351  
 Humidity:65.0%  
 Test Distance:4.950m [K=1.0000]  
 Remarks:

Planar Illuminance Curve



C Range: 0 - 360DEG  
 C Interval: 10.0DEG  
 Test Speed: HIGH  
 Temperature: 25.3DEG  
 Operators: DAMIN  
 Test Date: 2016-10-25

$\gamma$  Range: 0 - 180DEG  
 $\gamma$  Interval: 1.0DEG  
 Test System: EVERFINE GO-2000B\_V1 SYSTEM V2.0.351  
 Humidity: 65.0%  
 Test Distance: 4.950m [K=1.0000]  
 Remarks:

LUMINOUS DISTRIBUTION INTENSITY DATA

Test:U:24.00V I:0.1909A P:4.583W PF:1.000 Lamp Flux:297.72x1 lm		
NAME: LED Strip	TYPE:Indoor lighting	WEIGHT:25g
SPEC.:2016+5050 180LED	DIM.: 1000*14*1MM	SERIAL No.:201601025003
MFR.: Dilux	SUR.:1000*14mm	Shielding Angle:

Table--1

UNIT: cd

C(DEG) γ (DEG)	0	10	20	30	40	50	60	70	80	90	100	110	120	130	140	150	160	170	180
0	94.8	94.6	94.5	94.5	94.3	94.4	94.3	94.3	94.3	94.3	94.2	94.4	94.6	94.7	94.9	94.8	94.9	95.0	94.8
5	93.5	93.2	93.1	92.9	92.7	92.8	92.6	92.7	92.7	92.9	92.9	93.3	93.7	94.1	94.5	94.7	95.0	95.4	95.4
10	91.6	91.2	90.9	90.7	90.5	90.6	90.5	90.6	90.8	91.1	91.2	91.8	92.3	92.9	93.4	93.8	94.4	95.0	95.4
15	89.2	88.6	88.1	87.9	87.7	87.9	87.9	88.2	88.4	88.9	89.1	89.8	90.5	91.2	91.9	92.4	93.1	94.0	94.7
20	86.1	85.4	84.8	84.5	84.4	84.7	84.8	85.3	85.6	86.1	86.5	87.4	88.2	89.0	89.7	90.4	91.3	92.4	93.5
25	82.3	81.4	80.8	80.8	80.7	81.1	81.3	81.8	82.2	82.8	83.4	84.4	85.3	86.5	87.2	88.0	88.9	90.1	91.5
30	77.8	76.9	76.2	76.3	76.4	76.8	77.1	77.7	78.2	79.0	79.7	80.8	81.9	83.2	83.9	84.8	85.7	87.2	88.8
35	72.8	71.7	71.2	71.4	71.5	71.9	72.3	72.9	73.5	74.5	75.3	76.8	77.8	79.3	80.2	81.2	82.2	83.6	85.5
40	67.3	66.2	65.7	66.0	66.2	66.6	67.0	67.7	68.3	69.6	70.5	72.1	73.3	75.0	75.9	77.1	78.1	79.6	81.7
45	61.2	60.2	59.6	60.1	60.3	60.9	61.2	61.9	62.6	63.9	65.0	66.9	68.3	69.9	70.8	72.2	73.1	74.6	77.0
50	54.5	53.5	53.2	53.6	54.0	54.5	54.8	55.5	56.3	57.6	58.9	60.9	62.4	64.1	65.2	66.6	67.6	68.9	71.4
55	46.9	46.0	45.7	46.4	46.7	47.4	47.6	48.4	49.3	50.6	51.9	53.8	55.5	57.2	58.4	60.0	61.0	62.5	65.1
60	38.4	37.7	37.5	38.2	38.6	39.3	39.5	40.4	41.3	42.6	44.0	45.8	47.5	49.1	50.3	52.0	53.1	54.9	57.7
65	29.2	28.7	28.6	29.2	29.6	30.3	30.7	31.6	32.5	33.8	35.1	36.8	38.2	39.7	41.2	42.9	44.2	45.9	48.8
70	19.6	19.4	19.3	19.9	20.2	20.9	21.4	22.3	23.1	24.4	25.6	27.1	28.1	29.6	31.1	32.8	34.1	35.8	38.6
75	10.2	10.3	10.3	10.9	11.2	11.8	12.2	13.1	13.8	15.0	15.9	17.1	17.8	19.3	20.3	22.1	23.3	25.0	27.7
80	1.84	2.11	2.28	2.74	2.99	3.61	3.91	4.63	5.12	6.08	6.75	7.45	7.89	9.03	9.98	11.4	12.5	14.0	16.5
85	0.00	0.00	0.00	0.00	0.00	0.00	0.00	0.00	0.00	0.00	0.01	0.00	0.01	0.16	0.59	1.75	2.56	3.86	5.80
90	0.00	0.00	0.00	0.00	0.00	0.00	0.00	0.00	0.00	0.00	0.00	0.00	0.00	0.00	0.00	0.00	0.00	0.00	0.00
95	0.00	0.00	0.00	0.00	0.00	0.00	0.00	0.00	0.00	0.00	0.00	0.00	0.00	0.00	0.00	0.00	0.00	0.00	0.00
100	0.00	0.00	0.00	0.00	0.00	0.00	0.00	0.00	0.00	0.00	0.00	0.00	0.00	0.00	0.00	0.00	0.00	0.00	0.00
105	0.00	0.00	0.00	0.00	0.00	0.00	0.00	0.00	0.00	0.00	0.00	0.00	0.00	0.00	0.00	0.00	0.00	0.00	0.00
110	0.00	0.00	0.00	0.00	0.00	0.00	0.00	0.00	0.00	0.00	0.00	0.00	0.00	0.00	0.00	0.00	0.00	0.00	0.00
115	0.00	0.00	0.00	0.00	0.00	0.00	0.00	0.00	0.00	0.00	0.00	0.00	0.00	0.00	0.00	0.00	0.00	0.00	0.00
120	0.00	0.00	0.00	0.00	0.00	0.00	0.00	0.00	0.00	0.00	0.00	0.00	0.00	0.00	0.00	0.00	0.00	0.00	0.00
125	0.00	0.00	0.00	0.00	0.00	0.00	0.00	0.00	0.00	0.00	0.00	0.00	0.00	0.00	0.00	0.00	0.00	0.00	0.00
130	0.00	0.00	0.00	0.00	0.00	0.00	0.00	0.00	0.00	0.00	0.00	0.00	0.00	0.00	0.00	0.00	0.00	0.00	0.00
135	0.00	0.00	0.00	0.00	0.00	0.00	0.00	0.00	0.00	0.00	0.00	0.00	0.00	0.00	0.00	0.00	0.00	0.00	0.00
140	0.00	0.00	0.00	0.00	0.00	0.00	0.00	0.00	0.00	0.00	0.00	0.00	0.00	0.00	0.00	0.00	0.00	0.00	0.00
145	0.00	0.00	0.00	0.00	0.00	0.00	0.00	0.00	0.00	0.00	0.00	0.00	0.00	0.00	0.00	0.00	0.00	0.00	0.00
150	0.00	0.00	0.00	0.00	0.00	0.00	0.00	0.00	0.00	0.00	0.00	0.00	0.00	0.00	0.00	0.00	0.00	0.00	0.00
155	0.00	0.00	0.00	0.00	0.00	0.00	0.00	0.00	0.00	0.00	0.00	0.00	0.00	0.00	0.00	0.00	0.00	0.00	0.00
160	0.00	0.00	0.00	0.00	0.00	0.00	0.00	0.00	0.00	0.00	0.00	0.00	0.00	0.00	0.00	0.00	0.00	0.00	0.00
165	0.00	0.00	0.00	0.00	0.00	0.00	0.00	0.00	0.00	0.00	0.00	0.00	0.00	0.00	0.00	0.00	0.00	0.00	0.00
170	0.00	0.00	0.00	0.00	0.00	0.00	0.00	0.00	0.00	0.00	0.00	0.00	0.00	0.00	0.00	0.00	0.00	0.00	0.00
175	0.00	0.00	0.00	0.00	0.00	0.00	0.00	0.00	0.00	0.00	0.00	0.00	0.00	0.00	0.00	0.00	0.00	0.00	0.00
180	0.00	0.00	0.00	0.00	0.00	0.00	0.00	0.00	0.00	0.00	0.00	0.00	0.00	0.00	0.00	0.00	0.00	0.00	0.00

C Range: 0 - 360DEG  
 C Interval: 10.0DEG  
 Test Speed: HIGH  
 Temperature:25.3DEG  
 Operators:DAMIN  
 Test Date:2016-10-25

γ Range: 0 - 180DEG  
 γ Interval: 1.0DEG  
 Test System:EVERFINE GO-2000B\_V1 SYSTEM V2.0.351  
 Humidity:65.0%  
 Test Distance:4.950m [K=1.0000]  
 Remarks:

LUMINOUS DISTRIBUTION INTENSITY DATA

Test:U:24.00V I:0.1909A P:4.583W PF:1.000 Lamp Flux:297.72x1 lm		
NAME: LED Strip	TYPE:Indoor lighting	WEIGHT:25g
SPEC.:2016+5050 180LED	DIM.: 1000*14*1MM	SERIAL No.:201601025003
MFR.: Dilux	SUR.:1000*14mm	Shielding Angle:

Table--2

UNIT: cd

C( DEG) γ (DEG)	190	200	210	220	230	240	250	260	270	280	290	300	310	320	330	340	350		
0	94.6	94.5	94.5	94.3	94.4	94.3	94.3	94.3	94.3	94.2	94.4	94.6	94.7	94.9	94.8	94.9	95.0		
5	95.3	95.4	95.4	95.3	95.5	95.3	95.3	95.2	95.1	94.9	94.9	94.9	94.8	94.7	94.4	94.3	94.1		
10	95.4	95.6	95.7	95.8	95.9	95.8	95.7	95.6	95.4	95.0	94.8	94.6	94.3	93.9	93.4	92.9	92.5		
15	95.0	95.3	95.5	95.6	95.8	95.6	95.5	95.3	94.9	94.4	94.1	93.7	93.1	92.6	91.8	91.1	90.4		
20	93.9	94.4	94.7	94.9	95.0	94.9	94.7	94.4	93.9	93.3	92.8	92.1	91.4	90.6	89.6	88.7	87.6		
25	92.1	92.8	93.1	93.4	93.7	93.6	93.2	92.8	92.3	91.6	90.8	89.9	89.1	87.9	86.7	85.5	84.2		
30	89.5	90.4	90.9	91.3	91.6	91.7	91.3	90.9	90.3	89.4	88.5	87.3	86.1	84.6	83.0	81.5	79.9		
35	86.5	87.5	88.2	88.8	89.1	89.2	89.0	88.5	87.8	86.8	85.7	84.2	82.8	80.9	79.0	77.1	75.2		
40	82.7	83.9	84.8	85.5	86.1	86.5	86.0	85.5	84.6	83.5	82.2	80.6	78.8	76.4	74.1	72.0	69.9		
45	78.1	79.7	80.8	81.9	82.5	82.9	82.4	81.9	80.8	79.5	77.9	76.2	73.9	71.6	68.9	66.6	64.0		
50	72.8	74.6	76.0	77.4	78.0	78.3	77.7	77.0	75.7	74.3	72.7	70.9	68.4	65.9	62.8	60.3	57.5		
55	66.5	68.3	69.9	71.3	71.8	72.2	71.4	70.4	68.9	67.6	65.9	64.3	61.6	59.0	55.6	52.9	50.0		
60	58.9	60.8	62.2	63.6	63.9	64.2	63.4	62.4	60.6	59.5	57.5	55.8	53.1	50.4	47.1	44.4	41.5		
65	49.8	51.6	52.9	54.3	54.5	54.5	53.6	52.7	50.8	49.6	47.5	45.7	43.2	40.6	37.5	34.9	32.1		
70	39.6	41.1	42.4	43.5	43.5	43.5	42.4	41.5	39.7	38.1	35.9	34.6	32.2	29.8	27.1	24.7	22.3		
75	28.5	29.7	30.5	31.5	31.3	31.1	30.0	29.2	27.3	25.4	23.5	22.4	20.6	18.7	16.3	14.5	12.5		
80	16.8	17.7	18.1	18.6	18.2	17.9	17.2	16.4	14.4	13.0	11.5	10.6	9.20	7.85	6.07	4.81	3.37		
85	5.83	6.06	5.94	6.01	5.45	5.43	4.60	3.96	2.09	1.61	0.67	0.06	0.01	0.00	0.00	0.00	0.00		
90	0.00	0.00	0.00	0.00	0.00	0.00	0.00	0.00	0.00	0.00	0.00	0.00	0.00	0.00	0.00	0.00	0.00		
95	0.00	0.00	0.00	0.00	0.00	0.00	0.00	0.00	0.00	0.00	0.00	0.00	0.00	0.00	0.00	0.00	0.00		
100	0.00	0.00	0.00	0.00	0.00	0.00	0.00	0.00	0.00	0.00	0.00	0.00	0.00	0.00	0.00	0.00	0.00		
105	0.00	0.00	0.00	0.00	0.00	0.00	0.00	0.00	0.00	0.00	0.00	0.00	0.00	0.00	0.00	0.00	0.00		
110	0.00	0.00	0.00	0.00	0.00	0.00	0.00	0.00	0.00	0.00	0.00	0.00	0.00	0.00	0.00	0.00	0.00		
115	0.00	0.00	0.00	0.00	0.00	0.00	0.00	0.00	0.00	0.00	0.00	0.00	0.00	0.00	0.00	0.00	0.00		
120	0.00	0.00	0.00	0.00	0.00	0.00	0.00	0.00	0.00	0.00	0.00	0.00	0.00	0.00	0.00	0.00	0.00		
125	0.00	0.00	0.00	0.00	0.00	0.00	0.00	0.00	0.00	0.00	0.00	0.00	0.00	0.00	0.00	0.00	0.00		
130	0.00	0.00	0.00	0.00	0.00	0.00	0.00	0.00	0.00	0.00	0.00	0.00	0.00	0.00	0.00	0.00	0.00		
135	0.00	0.00	0.00	0.00	0.00	0.00	0.00	0.00	0.00	0.00	0.00	0.00	0.00	0.00	0.00	0.00	0.00		
140	0.00	0.00	0.00	0.00	0.00	0.00	0.00	0.00	0.00	0.00	0.00	0.00	0.00	0.00	0.00	0.00	0.00		
145	0.00	0.00	0.00	0.00	0.00	0.00	0.00	0.00	0.00	0.00	0.00	0.00	0.00	0.00	0.00	0.00	0.00		
150	0.00	0.00	0.00	0.00	0.00	0.00	0.00	0.00	0.00	0.00	0.00	0.00	0.00	0.00	0.00	0.00	0.00		
155	0.00	0.00	0.00	0.00	0.00	0.00	0.00	0.00	0.00	0.00	0.00	0.00	0.00	0.00	0.00	0.00	0.00		
160	0.00	0.00	0.00	0.00	0.00	0.00	0.00	0.00	0.00	0.00	0.00	0.00	0.00	0.00	0.00	0.00	0.00		
165	0.00	0.00	0.00	0.00	0.00	0.00	0.00	0.00	0.00	0.00	0.00	0.00	0.00	0.00	0.00	0.00	0.00		
170	0.00	0.00	0.00	0.00	0.00	0.00	0.00	0.00	0.00	0.00	0.00	0.00	0.00	0.00	0.00	0.00	0.00		
175	0.00	0.00	0.00	0.00	0.00	0.00	0.00	0.00	0.00	0.00	0.00	0.00	0.00	0.00	0.00	0.00	0.00		
180	0.00	0.00	0.00	0.00	0.00	0.00	0.00	0.00	0.00	0.00	0.00	0.00	0.00	0.00	0.00	0.00	0.00		

C Range: 0 - 360DEG  
 C Interval: 10.0DEG  
 Test Speed: HIGH  
 Temperature:25.3DEG  
 Operators:DAMIN  
 Test Date:2016-10-25

γ Range: 0 - 180DEG  
 γ Interval: 1.0DEG  
 Test System:EVERFINE GO-2000B\_V1 SYSTEM V2.0.351  
 Humidity:65.0%  
 Test Distance:4.950m [K=1.0000]  
 Remarks: