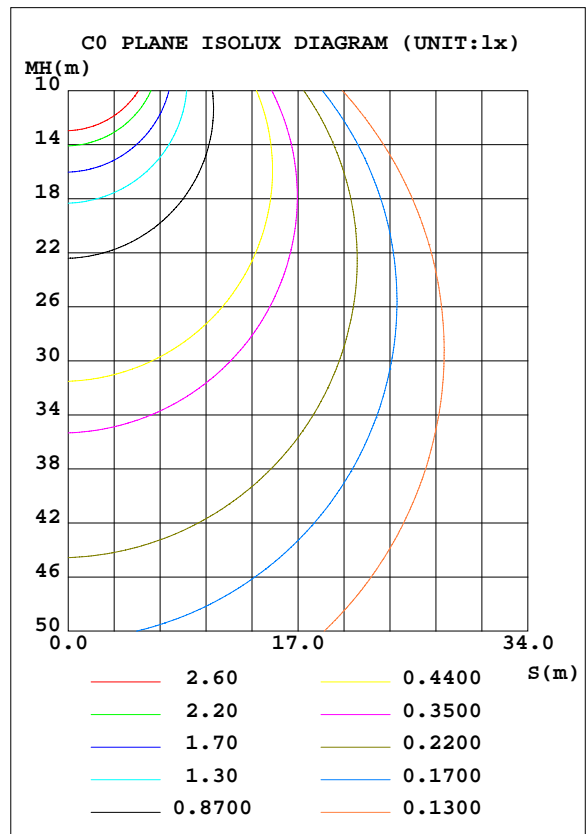
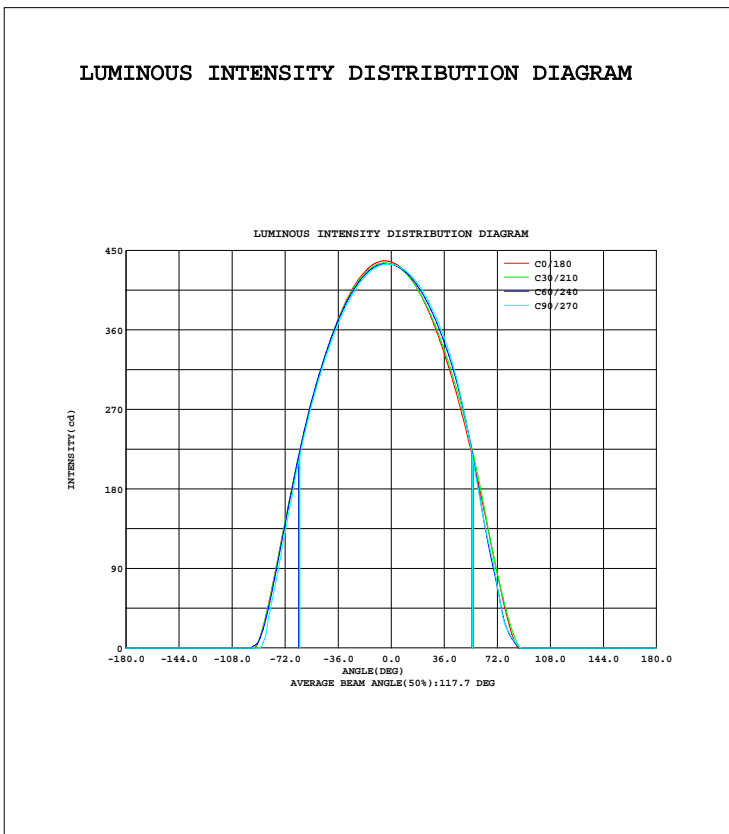


LUMINAIRE PHOTOMETRIC TEST REPORT

Test:U:24.00V I:1.095A P:26.28W PF:1.0000 Lamp Flux:1305.23x1 lm		
NAME: LED Strip	TYPE:Indoor lighting	WEIGHT:25g
SPEC.:2016+5050 180LED	DIM.: 1000*14*1MM	SERIAL No.:201601025001
MFR.: Dilux	SUR.:1000*14mm	Shielding Angle:

DATA OF LAMP		PHOTOMETRIC DATA Eff: 49.67 lm/W			
MODEL	FLS103T58FD180B-24(WCP)-UR	Imax(cd)	438.3	S/MH(C0/180)	1.34
NOMINAL POWER(W)	26.17	LOR(%)	100.0	S/MH(C90/270)	1.33
RATED VOLTAGE(V)	24	TOTAL FLUX(lm)	1305.2	η UP, DN(C0-180)	0.0,47.0
NOMINAL FLUX(lm)	1305.23	CIE CLASS	DIRECT	η UP, DN(C180-360)	0.0,53.0
LAMPS INSIDE	1	η up(%)	0.0	CIBSE SHR NOM	1.50
TEST VOLTAGE(V)	24	η down(%)	100.0	CIBSE SHR MAX	1.50



C Range: 0 - 360DEG
 C Interval: 10.0DEG
 Test Speed: HIGH
 Temperature:25.3DEG
 Operators:DAMIN
 Test Date:2016-10-25

γ Range: 0 - 180DEG
 γ Interval: 1.0DEG
 Test System:EVERFINE GO-2000B_V1 SYSTEM V2.0.351
 Humidity:65.0%
 Test Distance:4.950m [K=1.0000]
 Remarks:

ZONAL FLUX DIAGRAM

ZONAL FLUX DIAGRAM:

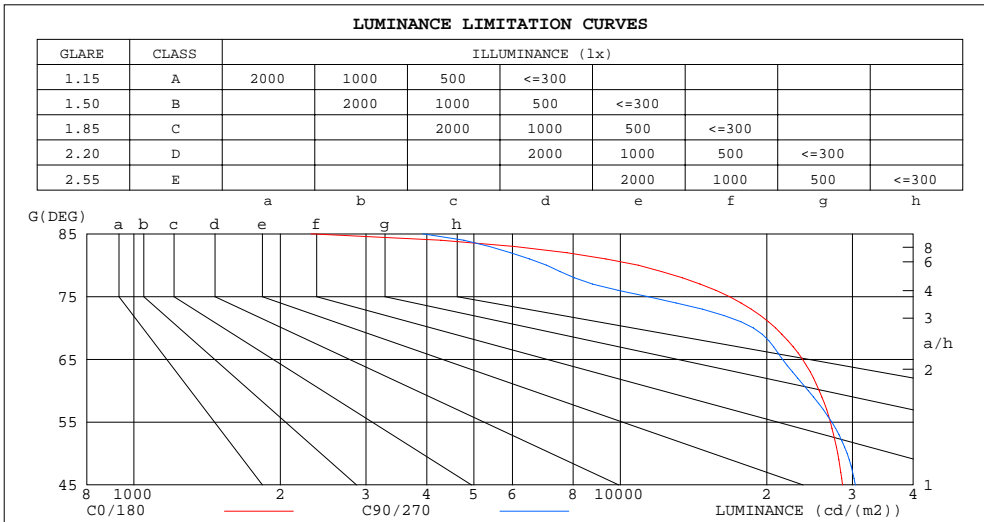
γ	C0	C45	C90	C135	C180	C225	C270	C315	γ	Φ zone	Φ total	lum, lamp
10	425.0	424.5	426.5	431.2	436.0	433.2	431.1	430.3	0- 10	41.29	41.29	3.16,3.16
20	399.7	402.2	407.5	413.7	421.8	419.3	415.9	411.7	10- 20	119.2	160.5	12.3,12.3
30	361.8	368.0	376.2	384.2	394.7	392.9	388.7	380.6	20- 30	183.4	343.9	26.3,26.3
40	312.4	321.5	331.4	341.8	354.5	354.1	349.6	337.7	30- 40	225.8	569.7	43.6,43.6
50	251.8	262.3	263.3	285.6	301.6	303.4	298.9	282.9	40- 50	240.1	809.8	62,62
60	179.5	180.5	170.4	208.8	237.0	238.8	232.8	215.0	50- 60	220.1	1030	78.9,78.9
70	99.89	87.63	89.90	117.5	159.3	159.4	148.5	132.7	60- 70	164.8	1195	91.5,91.5
80	26.47	26.85	17.15	42.16	75.39	73.59	60.26	51.02	70- 80	88.55	1283	98.3,98.3
90	0	0	0	0.0136	7.433	7.790	0	3.137	80- 90	21.64	1305	100,100
100	0	0	0	0	0	0	0	0	90-100	0.3884	1305	100,100
110	0	0	0	0	0	0	0	0	100-110	0	1305	100,100
120	0	0	0	0	0	0	0	0	110-120	0	1305	100,100
130	0	0	0	0	0	0	0	0	120-130	0	1305	100,100
140	0	0	0	0	0	0	0	0	130-140	0	1305	100,100
150	0	0	0	0	0	0	0	0	140-150	0	1305	100,100
160	0	0	0	0	0	0	0	0	150-160	0	1305	100,100
170	0	0	0	0	0	0	0	0	160-170	0	1305	100,100
180	0	0	0	0	0	0	0	0	170-180	0	1305	100,100
DEG	LUMINOUS INTENSITY:cd									UNIT:lm		

C Range: 0 - 360DEG
 C Interval: 10.0DEG
 Test Speed: HIGH
 Temperature:25.3DEG
 Operators:DAMIN
 Test Date:2016-10-25

γ Range: 0 - 180DEG
 γ Interval: 1.0DEG
 Test System:EVERFINE GO-2000B_V1 SYSTEM V2.0.351
 Humidity:65.0%
 Test Distance:4.950m [K=1.0000]
 Remarks:

LUMINANCE LIMITATION CURVES

Test:U:24.00V I:1.095A P:26.28W PF:1.0000 Lamp Flux:1305.23x1 lm		
NAME: LED Strip	TYPE:Indoor lighting	WEIGHT:25g
SPEC.:2016+5050 180LED	DIM.: 1000*14*1MM	SERIAL No.:201601025001
MFR.: Dilux	SUR.:1000*14mm	Shielding Angle:



LUMINANCE cd/(m2)		
G (DEG)	C0/180	C90/270
85	2314	3927
80	10888	7054
75	16756	11372
70	20862	18775
65	23693	21544
60	25636	24342
55	27026	27212
50	27979	29258
45	28629	30413

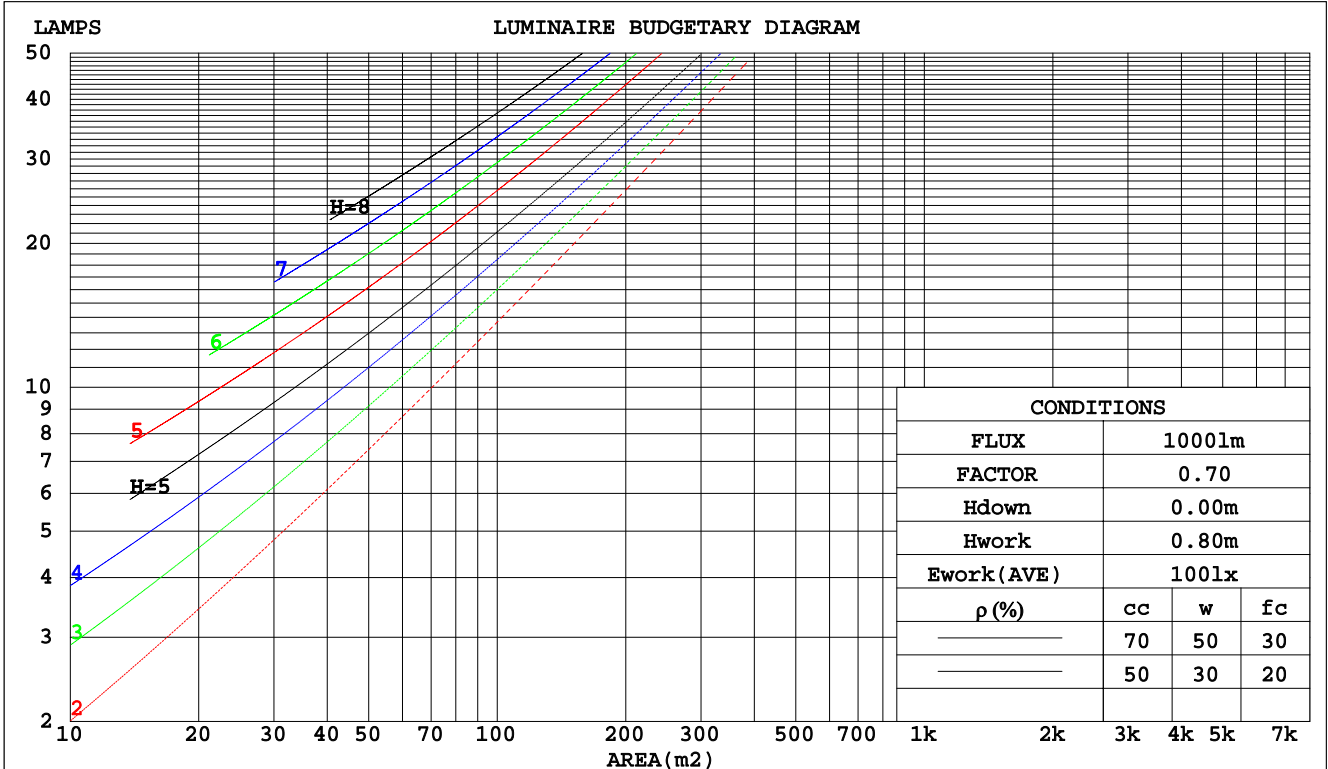
C Range: 0 - 360DEG
 C Interval: 10.0DEG
 Test Speed: HIGH
 Temperature:25.3DEG
 Operators:DAMIN
 Test Date:2016-10-25

γ Range: 0 - 180DEG
 γ Interval: 1.0DEG
 Test System:EVERFINE GO-2000B_V1 SYSTEM V2.0.351
 Humidity:65.0%
 Test Distance:4.950m [K=1.0000]
 Remarks:

CU AND LUMINAIRE BUDGETARY ESTIMATE DIAGRAM

Test:U:24.00V I:1.095A P:26.28W PF:1.0000 Lamp Flux:1305.23x1 lm		
NAME: LED Strip	TYPE:Indoor lighting	WEIGHT:25g
SPEC.:2016+5050 180LED	DIM.: 1000*14*1MM	SERIAL No.:201601025001
MFR.: Dilux	SUR.:1000*14mm	Shielding Angle:

pcc	80%			70%			50%			30%			10%			0
pw	50%	30%	10%	50%	30%	10%	50%	30%	10%	50%	30%	10%	50%	30%	10%	0
pfc	20%			20%			20%			20%			20%			0
RCR	RCR:Room Cavity Ratio															
	Coefficients of Utilization(CU)															
0.0	1.19	1.19	1.19	1.16	1.16	1.16	1.11	1.11	1.11	1.06	1.06	1.06	1.02	1.02	1.02	.00
1.0	1.04	.00	.96	1.02	.98	.94	.97	.94	.91	.93	.91	.88	.90	.88	.86	.84
2.0	.90	.84	.78	.89	.82	.77	.85	.80	.75	.82	.77	.73	.79	.75	.72	.69
3.0	.79	.71	.64	.78	.70	.64	.75	.68	.63	.72	.66	.62	.69	.65	.60	.58
4.0	.70	.61	.54	.69	.60	.54	.66	.59	.53	.64	.58	.52	.62	.56	.52	.50
5.0	.62	.53	.47	.61	.53	.46	.59	.52	.46	.57	.51	.45	.55	.49	.45	.43
6.0	.56	.47	.41	.55	.47	.40	.53	.46	.40	.52	.45	.40	.50	.44	.39	.37
7.0	.51	.42	.36	.50	.42	.36	.48	.41	.35	.47	.40	.35	.46	.39	.35	.33
8.0	.46	.38	.32	.46	.37	.32	.44	.37	.31	.43	.36	.31	.42	.36	.31	.29
9.0	.42	.34	.28	.42	.34	.28	.41	.33	.28	.40	.33	.28	.39	.32	.28	.26
10.0	.39	.31	.26	.39	.31	.26	.38	.30	.26	.37	.30	.25	.36	.30	.25	.24



C Range: 0 - 360DEG
 C Interval: 10.0DEG
 Test Speed: HIGH
 Temperature:25.3DEG
 Operators:DAMIN
 Test Date:2016-10-25

γ Range: 0 - 180DEG
 γ Interval: 1.0DEG
 Test System:EVERFINE GO-2000B_V1 SYSTEM V2.0.351
 Humidity:65.0%
 Test Distance:4.950m [K=1.0000]
 Remarks:

WEC AND CCEC

Test:U:24.00V I:1.095A P:26.28W PF:1.0000 Lamp Flux:1305.23x1 lm		
NAME: LED Strip	TYPE:Indoor lighting	WEIGHT:25g
SPEC.:2016+5050 180LED	DIM.: 1000*14*1MM	SERIAL No.:201601025001
MFR.: Dilux	SUR.:1000*14mm	Shielding Angle:

ρcc	80%			70%			50%			30%			10%			0
ρw	50%	30%	10%	50%	30%	10%	50%	30%	10%	50%	30%	10%	50%	30%	10%	0
ρfc	20%			20%			20%			20%			20%			0
RCR	RCR:Room Cavity Ratio						Wall Exitance Coefficients(WEC)									
0.0																
1.0	.309	.175	.056	.301	.172	.055	.288	.165	.053	.276	.159	.051	.265	.153	.049	
2.0	.292	.160	.049	.286	.157	.048	.274	.152	.047	.263	.148	.046	.253	.143	.045	
3.0	.271	.144	.043	.265	.142	.043	.255	.138	.042	.245	.134	.041	.236	.131	.041	
4.0	.250	.130	.038	.245	.128	.038	.236	.125	.037	.228	.122	.037	.220	.119	.036	
5.0	.232	.118	.034	.227	.117	.034	.219	.114	.034	.211	.112	.033	.204	.109	.033	
6.0	.215	.108	.031	.211	.107	.031	.204	.104	.030	.197	.102	.030	.190	.100	.030	
7.0	.200	.099	.028	.197	.098	.028	.190	.096	.028	.184	.094	.027	.178	.093	.027	
8.0	.187	.091	.026	.184	.090	.026	.178	.089	.025	.172	.087	.025	.167	.086	.025	
9.0	.175	.085	.024	.172	.084	.024	.167	.083	.023	.162	.081	.023	.157	.080	.023	
10.0	.164	.079	.022	.162	.078	.022	.157	.077	.022	.153	.076	.022	.149	.075	.021	

ρcc	80%			70%			50%			30%			10%			0
ρw	50%	30%	10%	50%	30%	10%	50%	30%	10%	50%	30%	10%	50%	30%	10%	0
ρfc	20%			20%			20%			20%			20%			0
RCR	RCR:Room Cavity Ratio						Ceiling Cavity Exitance Coefficients(CCEC)									
0.0	.191	.191	.191	.163	.163	.163	.111	.111	.111	.064	.064	.064	.020	.020	.020	
1.0	.180	.156	.135	.154	.134	.116	.106	.092	.080	.061	.053	.047	.019	.017	.015	
2.0	.172	.132	.098	.148	.114	.085	.101	.079	.059	.058	.046	.035	.019	.015	.011	
3.0	.165	.115	.074	.141	.099	.065	.097	.069	.045	.056	.040	.027	.018	.013	.009	
4.0	.157	.101	.058	.135	.087	.051	.093	.061	.036	.054	.036	.021	.017	.012	.007	
5.0	.150	.091	.047	.129	.079	.041	.089	.055	.029	.051	.032	.017	.017	.011	.006	
6.0	.143	.083	.039	.123	.071	.034	.085	.050	.024	.049	.029	.014	.016	.010	.005	
7.0	.136	.076	.033	.117	.066	.029	.081	.046	.021	.047	.027	.012	.015	.009	.004	
8.0	.130	.070	.029	.112	.061	.025	.077	.043	.018	.045	.025	.011	.015	.008	.004	
9.0	.124	.065	.025	.106	.056	.022	.074	.040	.016	.043	.023	.009	.014	.008	.003	
10.0	.118	.061	.023	.102	.053	.020	.070	.037	.014	.041	.022	.008	.013	.007	.003	

C Range: 0 - 360DEG
 C Interval: 10.0DEG
 Test Speed: HIGH
 Temperature:25.3DEG
 Operators:DAMIN
 Test Date:2016-10-25

γ Range: 0 - 180DEG
 γ Interval: 1.0DEG
 Test System:EVERFINE GO-2000B_V1 SYSTEM V2.0.351
 Humidity:65.0%
 Test Distance:4.950m [K=1.0000]
 Remarks:

UGR(Unified Glare Rating) Table

Test:U:24.00V I:1.095A P:26.28W PF:1.0000 Lamp Flux:1305.23x1 lm										
NAME: LED Strip					TYPE:Indoor lighting			WEIGHT:25g		
SPEC.:2016+5050 180LED					DIM.: 1000*14*1MM			SERIAL No.:201601025001		
MFR.: Dilux					SUR.:1000*14mm			Shielding Angle:		
ceiling/cavity	0.7	0.7	0.5	0.5	0.3	0.7	0.7	0.5	0.5	0.3
walls	0.5	0.3	0.5	0.3	0.3	0.5	0.3	0.5	0.3	0.3
working plane	0.2	0.2	0.2	0.2	0.2	0.2	0.2	0.2	0.2	0.2
Room dimensions	Viewed crosswise					Viewed endwise				
x = 2H y = 2H	24.1	25.6	24.4	25.8	26.0	23.9	25.4	24.2	25.6	25.8
3H	25.4	26.8	25.7	27.0	27.2	24.9	26.3	25.2	26.5	26.8
4H	25.8	27.1	26.1	27.4	27.6	25.1	26.4	25.4	26.7	26.9
6H	25.9	27.2	26.2	27.5	27.7	25.1	26.3	25.4	26.6	26.9
8H	25.9	27.1	26.3	27.4	27.7	25.0	26.3	25.4	26.5	26.8
12H	25.9	27.0	26.2	27.3	27.6	25.0	26.2	25.3	26.5	26.8
4H 2H	24.6	25.9	24.9	26.2	26.4	24.4	25.7	24.7	26.0	26.2
3H	26.0	27.2	26.3	27.5	27.8	25.5	26.7	25.9	27.0	27.3
4H	26.5	27.6	26.9	27.9	28.2	25.7	26.8	26.1	27.1	27.5
6H	26.8	27.7	27.2	28.1	28.4	25.8	26.7	26.2	27.1	27.4
8H	26.8	27.7	27.2	28.0	28.4	25.7	26.6	26.2	27.0	27.4
12H	26.8	27.6	27.2	28.0	28.4	25.7	26.5	26.1	26.9	27.3
8H 4H	26.6	27.5	27.0	27.8	28.2	25.9	26.8	26.3	27.1	27.5
6H	26.9	27.7	27.4	28.1	28.5	25.9	26.7	26.4	27.1	27.5
8H	27.0	27.7	27.5	28.1	28.5	25.9	26.6	26.4	27.0	27.5
12H	27.0	27.6	27.5	28.0	28.5	25.9	26.5	26.4	26.9	27.4
12H 4H	26.5	27.4	27.0	27.8	28.2	25.9	26.7	26.3	27.1	27.5
6H	26.9	27.6	27.4	28.0	28.5	26.0	26.6	26.4	27.0	27.5
8H	27.0	27.6	27.5	28.0	28.5	26.0	26.5	26.5	27.0	27.5
Variations with the observer position at spacings:										
S = 1.0H	+ 0.2 / - 0.3					+ 0.2 / - 0.3				
1.5H	+ 0.3 / - 0.5					+ 0.3 / - 0.5				
2.0H	+ 0.2 / - 0.5					+ 0.6 / - 0.6				

CIE Pub.117 Corrected 1305 lm Total Lamp Luminous Flux.(8log(F/F0) = 0.9)

C Range: 0 - 360DEG
 C Interval: 10.0DEG
 Test Speed: HIGH
 Temperature:25.3DEG
 Operators:DAMIN
 Test Date:2016-10-25

γ Range: 0 - 180DEG
 γ Interval: 1.0DEG
 Test System:EVERFINE GO-2000B_V1 SYSTEM V2.0.351
 Humidity:65.0%
 Test Distance:4.950m [K=1.0000]
 Remarks:

UTILIZATION FACTORS TABLE

Test:U:24.00V I:1.095A P:26.28W PF:1.0000 Lamp Flux:1305.23x1 lm		
NAME: LED Strip	TYPE:Indoor lighting	WEIGHT:25g
SPEC.:2016+5050 180LED	DIM.: 1000*14*1MM	SERIAL No.:201601025001
MFR.: Dilux	SUR.:1000*14mm	Shielding Angle:

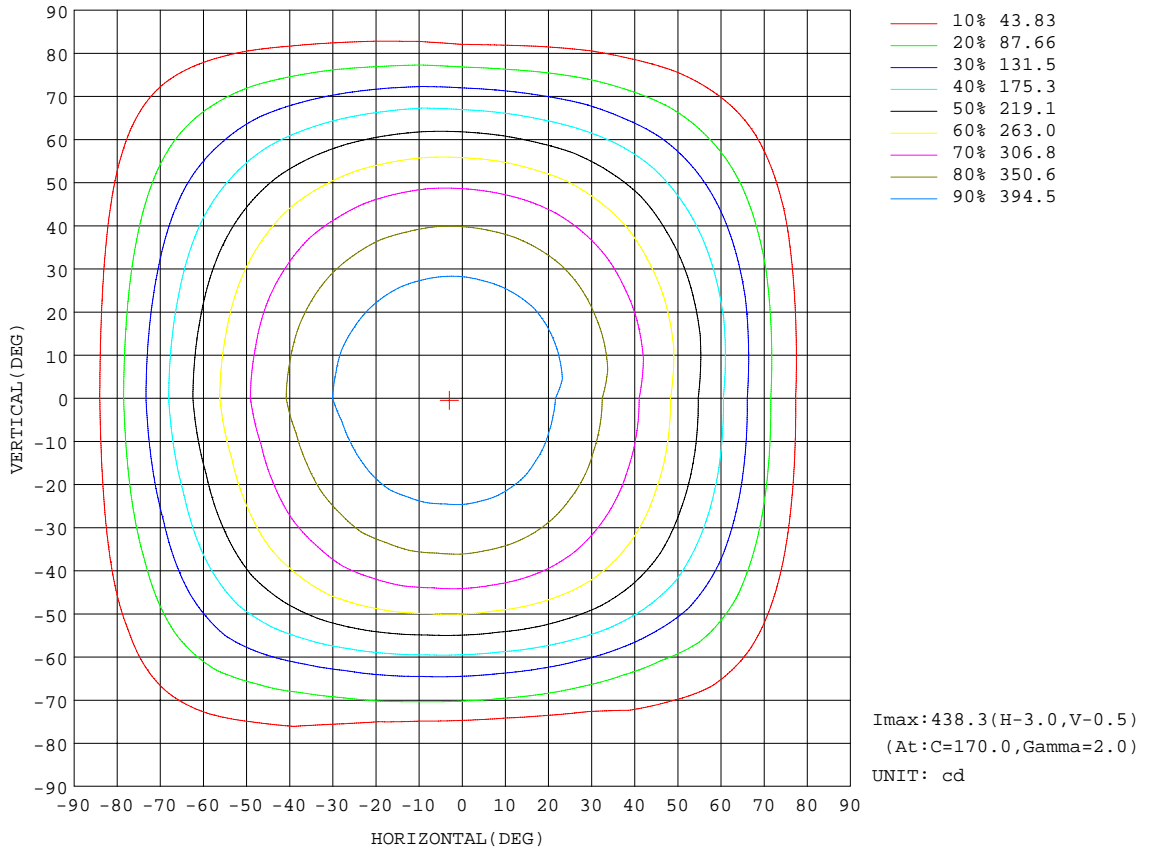
REFLECTANCE										
Ceiling	0.8	0.8	0.8	0.7	0.7	0.7	0.5	0.5	0.5	0
Walls	0.7	0.5	0.3	0.7	0.5	0.3	0.7	0.5	0.3	0
Working plane	0.2	0.2	0.2	0.2	0.2	0.2	0.2	0.2	0.2	0
ROOM INDEX	UTILIZATION FACTORS(PERCENT) $k(RI) \times RCR = 5$									
k = 0.60	57	45	38	56	45	38	55	44	38	31
0.80	67	55	48	66	55	48	64	54	47	40
1.00	76	64	57	74	64	57	72	65	56	49
1.25	83	72	65	81	71	65	79	70	64	56
1.50	88	78	71	86	77	70	83	75	69	62
2.00	95	86	80	93	85	79	89	83	77	70
2.50	99	91	85	97	90	84	93	87	82	74
3.00	102	95	90	100	94	89	96	91	87	78
4.00	106	101	96	104	99	94	100	95	92	83
5.00	109	104	100	106	102	98	102	98	95	86
ROOM INDEX	UF(total)									Direct
According to DIN EN 13032-2 2004			Suspended				SHRNOM = 1.25			

C Range: 0 - 360DEG
 C Interval: 10.0DEG
 Test Speed: HIGH
 Temperature:25.3DEG
 Operators:DAMIN
 Test Date:2016-10-25

γ Range: 0 - 180DEG
 γ Interval: 1.0DEG
 Test System:EVERFINE GO-2000B_V1 SYSTEM V2.0.351
 Humidity:65.0%
 Test Distance:4.950m [K=1.0000]
 Remarks:

ISOCANDELA DIAGRAM

Test:U:24.00V I:1.095A P:26.28W PF:1.0000 Lamp Flux:1305.23x1 lm		
NAME: LED Strip	TYPE:Indoor lighting	WEIGHT:25g
SPEC.:2016+5050 180LED	DIM.: 1000*14*1MM	SERIAL No.:201601025001
MFR.: Dilux	SUR.:1000*14mm	Shielding Angle:



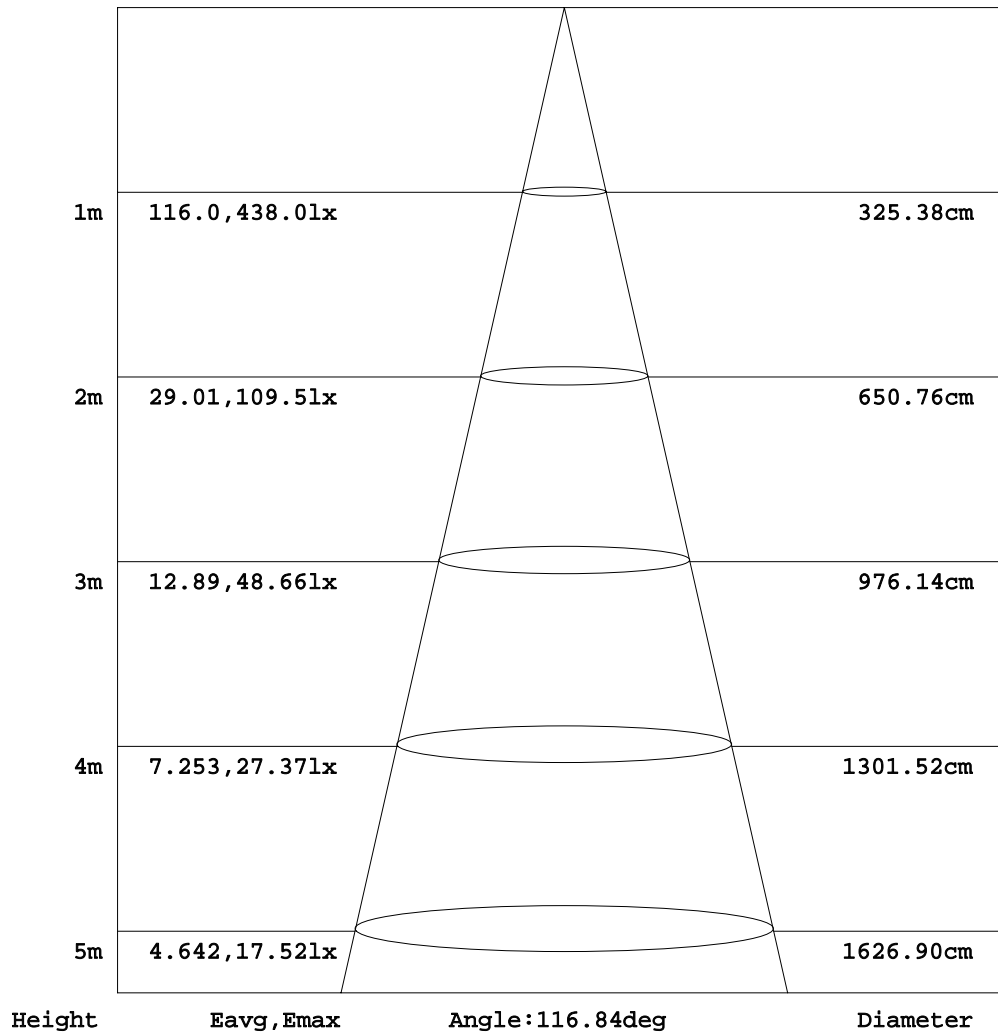
C Range: 0 - 360DEG
 C Interval: 10.0DEG
 Test Speed: HIGH
 Temperature: 25.3DEG
 Operators: DAMIN
 Test Date: 2016-10-25

γ Range: 0 - 180DEG
 γ Interval: 1.0DEG
 Test System: EVERFINE GO-2000B_V1 SYSTEM V2.0.351
 Humidity: 65.0%
 Test Distance: 4.950m [K=1.0000]
 Remarks:

AAI Figure

Test:U:24.00V I:1.095A P:26.28W PF:1.0000 Lamp Flux:1305.23x1 lm		
NAME: LED Strip	TYPE:Indoor lighting	WEIGHT:25g
SPEC.:2016+5050 180LED	DIM.: 1000*14*1MM	SERIAL No.:201601025001
MFR.: Dilux	SUR.:1000*14mm	Shielding Angle:

Flux out:1010 lm



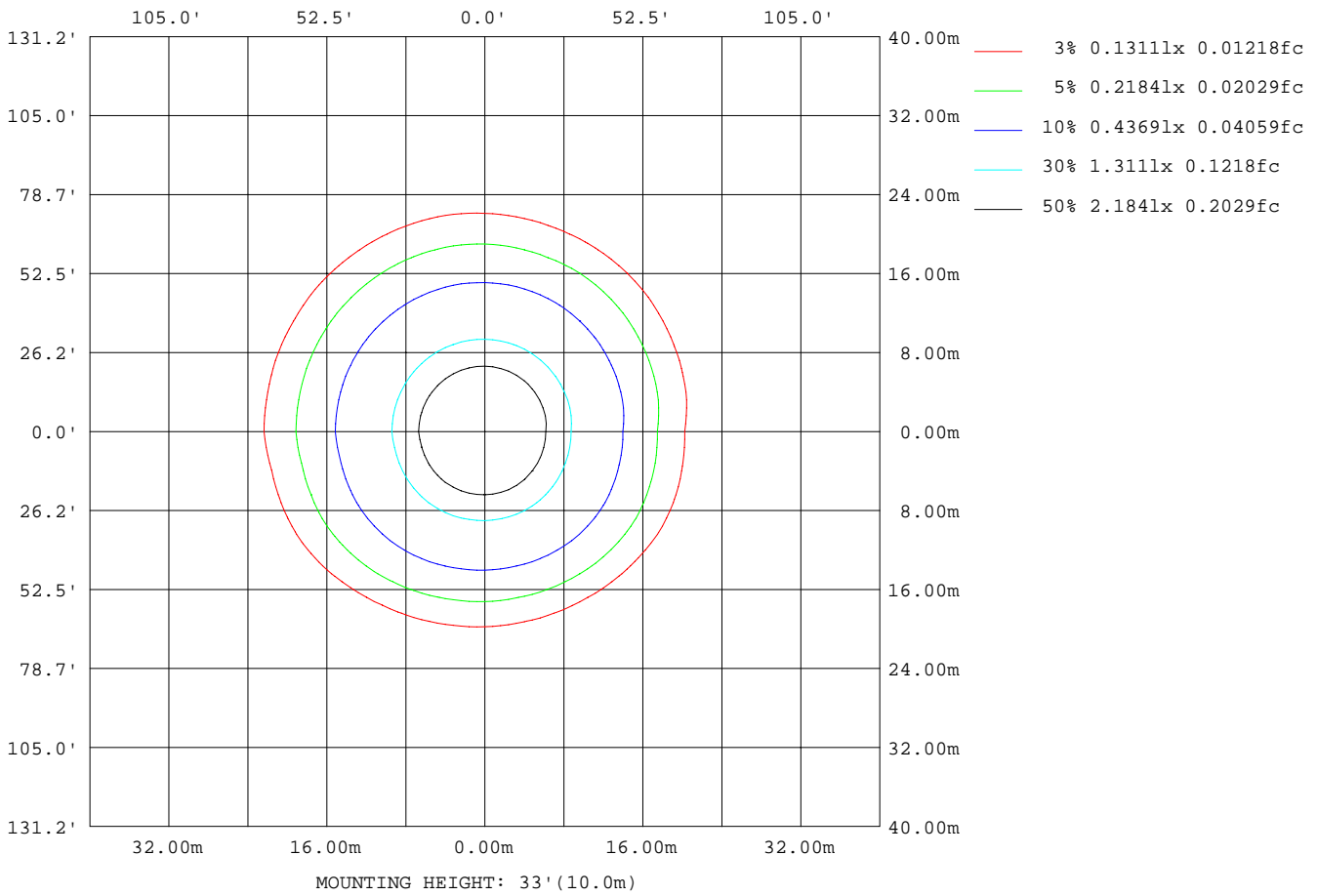
Note:The Curves indicate the illuminated area and the average illumination when the luminaire is at different distance.

C Range: 0 - 360DEG
 C Interval: 10.0DEG
 Test Speed: HIGH
 Temperature:25.3DEG
 Operators:DAMIN
 Test Date:2016-10-25

γ Range: 0 - 180DEG
 γ Interval: 1.0DEG
 Test System:EVERFINE GO-2000B_V1 SYSTEM V2.0.351
 Humidity:65.0%
 Test Distance:4.950m [K=1.0000]
 Remarks:

ISOLUX DIAGRAM

Test:U:24.00V I:1.095A P:26.28W PF:1.0000 Lamp Flux:1305.23x1 lm		
NAME: LED Strip	TYPE:Indoor lighting	WEIGHT:25g
SPEC.:2016+5050 180LED	DIM.: 1000*14*1MM	SERIAL No.:201601025001
MFR.: Dilux	SUR.:1000*14mm	Shielding Angle:



C Range: 0 - 360DEG
 C Interval: 10.0DEG
 Test Speed: HIGH
 Temperature:25.3DEG
 Operators:DAMIN
 Test Date:2016-10-25

γ Range: 0 - 180DEG
 γ Interval: 1.0DEG
 Test System:EVERFINE GO-2000B_V1 SYSTEM V2.0.351
 Humidity:65.0%
 Test Distance:4.950m [K=1.0000]
 Remarks:

LED Avg.L Report

Test:U:24.00V I:1.095A P:26.28W PF:1.0000 Lamp Flux:1305.23x1 lm		
NAME: LED Strip	TYPE:Indoor lighting	WEIGHT:25g
SPEC.:2016+5050 180LED	DIM.: 1000*14*1MM	SERIAL No.:201601025001
MFR.: Dilux	SUR.:1000*14mm	Shielding Angle:

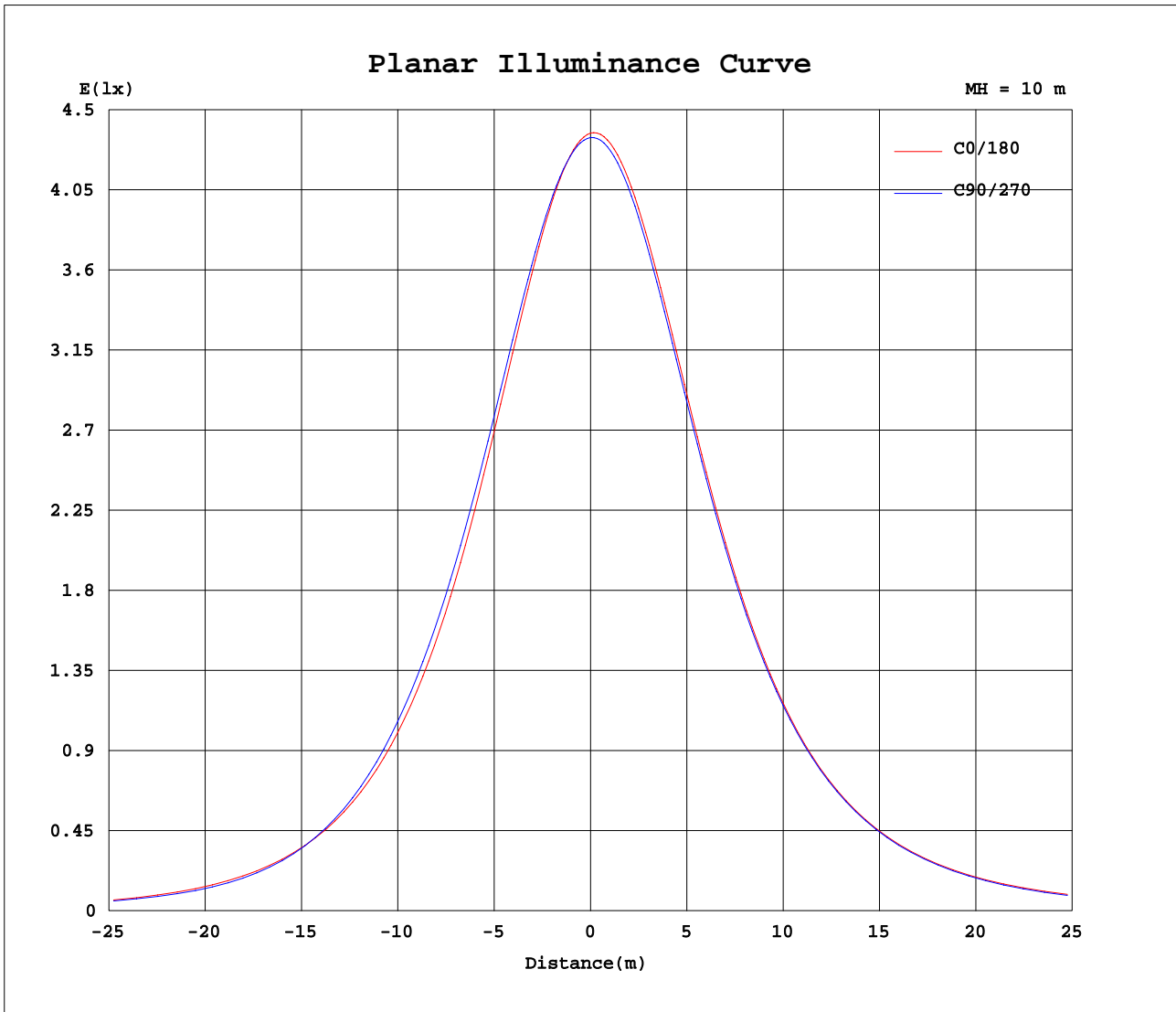
AvgL	cd/m2
L_0~180(65)av	28718
L_0~180(75)av	24589
L_0~180(85)av	16264
L_90~270(65)av	27050
L_90~270(75)av	19985
L_90~270(85)av	8485
L_45(65)av	28349
L_45(75)av	23305
L_45(85)av	15764

Standard: GB/T 29293-2012

C Range: 0 - 360DEG
 C Interval: 10.0DEG
 Test Speed: HIGH
 Temperature:25.3DEG
 Operators:DAMIN
 Test Date:2016-10-25

γ Range: 0 - 180DEG
 γ Interval: 1.0DEG
 Test System:EVERFINE GO-2000B_V1 SYSTEM V2.0.351
 Humidity:65.0%
 Test Distance:4.950m [K=1.0000]
 Remarks:

Planar Illuminance Curve



C Range: 0 - 360DEG
 C Interval: 10.0DEG
 Test Speed: HIGH
 Temperature: 25.3DEG
 Operators: DAMIN
 Test Date: 2016-10-25

γ Range: 0 - 180DEG
 γ Interval: 1.0DEG
 Test System: EVERFINE GO-2000B_V1 SYSTEM V2.0.351
 Humidity: 65.0%
 Test Distance: 4.950m [K=1.0000]
 Remarks:

LUMINOUS DISTRIBUTION INTENSITY DATA

Test:U:24.00V I:1.095A P:26.28W PF:1.0000 Lamp Flux:1305.23x1 lm		
NAME: LED Strip	TYPE:Indoor lighting	WEIGHT:25g
SPEC.:2016+5050 180LED	DIM.: 1000*14*1MM	SERIAL No.:201601025001
MFR.: Dilux	SUR.:1000*14mm	Shielding Angle:

Table--1

UNIT: cd

C(DEG) γ (DEG)	0	10	20	30	40	50	60	70	80	90	100	110	120	130	140	150	160	170	180
0	437	436	435	435	435	435	434	434	434	434	434	435	436	436	437	437	437	438	437
5	433	432	431	431	431	431	431	431	431	432	432	433	434	435	436	436	437	438	438
10	425	424	424	424	424	425	425	426	426	427	427	428	429	431	432	432	433	435	436
15	414	413	413	414	414	416	416	417	418	419	419	420	422	423	425	425	426	428	431
20	400	399	399	400	401	403	404	406	406	408	408	410	411	413	414	415	416	418	422
25	382	382	382	384	385	388	390	391	392	393	394	396	398	400	401	402	403	405	410
30	362	362	362	365	367	369	372	373	375	376	377	379	381	384	384	385	387	389	395
35	338	339	339	342	345	348	350	352	354	356	357	360	361	364	365	366	367	369	376
40	312	313	314	317	320	323	326	328	329	331	333	337	338	342	342	344	344	347	354
45	283	284	285	289	292	296	297	298	299	301	303	308	311	316	316	318	319	321	330
50	252	253	255	259	261	263	263	262	261	263	266	273	279	285	287	289	290	292	302
55	217	219	221	225	225	224	221	218	216	219	222	230	239	248	253	257	258	261	271
60	179	181	184	186	183	178	173	170	168	170	174	182	192	204	213	221	223	226	237
65	140	142	144	143	135	129	125	124	125	127	130	136	143	155	170	181	185	188	200
70	99.9	103	104	100	89.6	85.7	85.1	85.9	86.7	89.9	93.5	98.7	102	110	125	138	144	147	159
75	60.7	63.6	65.0	63.2	55.8	51.7	42.9	39.4	38.6	41.2	44.6	52.0	63.5	73.2	80.8	93.9	101	105	117
80	26.5	28.9	30.8	30.9	28.2	25.5	16.0	13.7	15.0	17.1	18.6	19.7	26.3	39.0	45.3	53.1	59.9	64.0	75.4
85	2.82	4.46	5.67	7.19	7.15	7.24	3.54	2.80	3.56	4.79	5.52	5.63	7.00	13.5	17.7	21.8	24.8	27.6	36.9
90	0.00	0.00	0.00	0.00	0.00	0.00	0.00	0.00	0.00	0.00	0.00	0.00	0.00	0.00	0.03	0.97	1.32	2.49	7.43
95	0.00	0.00	0.00	0.00	0.00	0.00	0.00	0.00	0.00	0.00	0.00	0.00	0.00	0.00	0.00	0.00	0.00	0.00	0.00
100	0.00	0.00	0.00	0.00	0.00	0.00	0.00	0.00	0.00	0.00	0.00	0.00	0.00	0.00	0.00	0.00	0.00	0.00	0.00
105	0.00	0.00	0.00	0.00	0.00	0.00	0.00	0.00	0.00	0.00	0.00	0.00	0.00	0.00	0.00	0.00	0.00	0.00	0.00
110	0.00	0.00	0.00	0.00	0.00	0.00	0.00	0.00	0.00	0.00	0.00	0.00	0.00	0.00	0.00	0.00	0.00	0.00	0.00
115	0.00	0.00	0.00	0.00	0.00	0.00	0.00	0.00	0.00	0.00	0.00	0.00	0.00	0.00	0.00	0.00	0.00	0.00	0.00
120	0.00	0.00	0.00	0.00	0.00	0.00	0.00	0.00	0.00	0.00	0.00	0.00	0.00	0.00	0.00	0.00	0.00	0.00	0.00
125	0.00	0.00	0.00	0.00	0.00	0.00	0.00	0.00	0.00	0.00	0.00	0.00	0.00	0.00	0.00	0.00	0.00	0.00	0.00
130	0.00	0.00	0.00	0.00	0.00	0.00	0.00	0.00	0.00	0.00	0.00	0.00	0.00	0.00	0.00	0.00	0.00	0.00	0.00
135	0.00	0.00	0.00	0.00	0.00	0.00	0.00	0.00	0.00	0.00	0.00	0.00	0.00	0.00	0.00	0.00	0.00	0.00	0.00
140	0.00	0.00	0.00	0.00	0.00	0.00	0.00	0.00	0.00	0.00	0.00	0.00	0.00	0.00	0.00	0.00	0.00	0.00	0.00
145	0.00	0.00	0.00	0.00	0.00	0.00	0.00	0.00	0.00	0.00	0.00	0.00	0.00	0.00	0.00	0.00	0.00	0.00	0.00
150	0.00	0.00	0.00	0.00	0.00	0.00	0.00	0.00	0.00	0.00	0.00	0.00	0.00	0.00	0.00	0.00	0.00	0.00	0.00
155	0.00	0.00	0.00	0.00	0.00	0.00	0.00	0.00	0.00	0.00	0.00	0.00	0.00	0.00	0.00	0.00	0.00	0.00	0.00
160	0.00	0.00	0.00	0.00	0.00	0.00	0.00	0.00	0.00	0.00	0.00	0.00	0.00	0.00	0.00	0.00	0.00	0.00	0.00
165	0.00	0.00	0.00	0.00	0.00	0.00	0.00	0.00	0.00	0.00	0.00	0.00	0.00	0.00	0.00	0.00	0.00	0.00	0.00
170	0.00	0.00	0.00	0.00	0.00	0.00	0.00	0.00	0.00	0.00	0.00	0.00	0.00	0.00	0.00	0.00	0.00	0.00	0.00
175	0.00	0.00	0.00	0.00	0.00	0.00	0.00	0.00	0.00	0.00	0.00	0.00	0.00	0.00	0.00	0.00	0.00	0.00	0.00
180	0.00	0.00	0.00	0.00	0.00	0.00	0.00	0.00	0.00	0.00	0.00	0.00	0.00	0.00	0.00	0.00	0.00	0.00	0.00

C Range: 0 - 360DEG
 C Interval: 10.0DEG
 Test Speed: HIGH
 Temperature:25.3DEG
 Operators:DAMIN
 Test Date:2016-10-25

γ Range: 0 - 180DEG
 γ Interval: 1.0DEG
 Test System:EVERFINE GO-2000B_V1 SYSTEM V2.0.351
 Humidity:65.0%
 Test Distance:4.950m [K=1.0000]
 Remarks:

LUMINOUS DISTRIBUTION INTENSITY DATA

Test:U:24.00V I:1.095A P:26.28W PF:1.0000 Lamp Flux:1305.23x1 lm		
NAME: LED Strip	TYPE:Indoor lighting	WEIGHT:25g
SPEC.:2016+5050 180LED	DIM.: 1000*14*1MM	SERIAL No.:201601025001
MFR.: Dilux	SUR.:1000*14mm	Shielding Angle:

Table--2

UNIT: cd

C(DEG) γ (DEG)	190	200	210	220	230	240	250	260	270	280	290	300	310	320	330	340	350		
0	436	435	435	435	435	434	434	434	434	434	435	436	436	437	437	437	438		
5	437	437	436	435	436	435	435	434	434	434	434	435	435	435	435	435	435		
10	435	434	434	433	433	432	432	431	431	430	430	430	430	430	429	429	428		
15	429	429	428	428	428	427	426	426	425	424	424	423	423	422	421	420	419		
20	421	421	420	420	419	418	417	417	416	415	414	413	412	411	409	407	406		
25	409	409	408	408	407	407	406	405	404	402	401	400	399	397	394	392	390		
30	394	394	393	393	393	392	391	390	389	387	386	384	382	379	376	373	370		
35	375	376	375	375	375	374	373	372	371	369	367	365	363	359	355	351	348		
40	354	355	355	354	354	354	352	351	350	348	346	343	340	335	331	327	322		
45	329	330	330	331	330	330	328	328	326	324	321	318	314	310	304	300	294		
50	301	303	303	304	303	303	302	302	299	296	293	291	285	281	274	269	263		
55	270	272	272	273	273	273	272	271	268	266	262	259	254	248	241	236	230		
60	236	238	238	239	239	239	237	236	233	230	226	223	217	213	205	199	193		
65	199	200	200	202	200	199	198	197	193	188	184	181	178	173	166	160	153		
70	159	160	160	160	159	157	156	155	149	144	142	140	134	131	125	119	113		
75	116	118	117	117	115	114	111	109	104	101	98.6	96.9	92.4	89.0	83.3	78.6	72.8		
80	74.2	75.3	74.6	74.8	72.4	70.7	68.5	66.2	60.3	58.7	58.3	56.8	52.4	49.6	44.7	40.8	35.9		
85	36.1	36.7	36.4	36.0	33.9	32.9	31.3	24.6	15.9	16.9	24.6	22.8	20.2	17.4	14.6	11.9	8.76		
90	6.98	7.95	7.76	8.18	7.40	7.30	5.88	0.21	0.00	0.00	4.28	4.63	3.68	2.59	0.99	0.00	0.00		
95	0.00	0.00	0.00	0.73	1.19	0.00	0.00	0.00	0.00	0.00	0.00	0.00	0.00	0.00	0.00	0.00	0.00		
100	0.00	0.00	0.00	0.00	0.00	0.00	0.00	0.00	0.00	0.00	0.00	0.00	0.00	0.00	0.00	0.00	0.00		
105	0.00	0.00	0.00	0.00	0.00	0.00	0.00	0.00	0.00	0.00	0.00	0.00	0.00	0.00	0.00	0.00	0.00		
110	0.00	0.00	0.00	0.00	0.00	0.00	0.00	0.00	0.00	0.00	0.00	0.00	0.00	0.00	0.00	0.00	0.00		
115	0.00	0.00	0.00	0.00	0.00	0.00	0.00	0.00	0.00	0.00	0.00	0.00	0.00	0.00	0.00	0.00	0.00		
120	0.00	0.00	0.00	0.00	0.00	0.00	0.00	0.00	0.00	0.00	0.00	0.00	0.00	0.00	0.00	0.00	0.00		
125	0.00	0.00	0.00	0.00	0.00	0.00	0.00	0.00	0.00	0.00	0.00	0.00	0.00	0.00	0.00	0.00	0.00		
130	0.00	0.00	0.00	0.00	0.00	0.00	0.00	0.00	0.00	0.00	0.00	0.00	0.00	0.00	0.00	0.00	0.00		
135	0.00	0.00	0.00	0.00	0.00	0.00	0.00	0.00	0.00	0.00	0.00	0.00	0.00	0.00	0.00	0.00	0.00		
140	0.00	0.00	0.00	0.00	0.00	0.00	0.00	0.00	0.00	0.00	0.00	0.00	0.00	0.00	0.00	0.00	0.00		
145	0.00	0.00	0.00	0.00	0.00	0.00	0.00	0.00	0.00	0.00	0.00	0.00	0.00	0.00	0.00	0.00	0.00		
150	0.00	0.00	0.00	0.00	0.00	0.00	0.00	0.00	0.00	0.00	0.00	0.00	0.00	0.00	0.00	0.00	0.00		
155	0.00	0.00	0.00	0.00	0.00	0.00	0.00	0.00	0.00	0.00	0.00	0.00	0.00	0.00	0.00	0.00	0.00		
160	0.00	0.00	0.00	0.00	0.00	0.00	0.00	0.00	0.00	0.00	0.00	0.00	0.00	0.00	0.00	0.00	0.00		
165	0.00	0.00	0.00	0.00	0.00	0.00	0.00	0.00	0.00	0.00	0.00	0.00	0.00	0.00	0.00	0.00	0.00		
170	0.00	0.00	0.00	0.00	0.00	0.00	0.00	0.00	0.00	0.00	0.00	0.00	0.00	0.00	0.00	0.00	0.00		
175	0.00	0.00	0.00	0.00	0.00	0.00	0.00	0.00	0.00	0.00	0.00	0.00	0.00	0.00	0.00	0.00	0.00		
180	0.00	0.00	0.00	0.00	0.00	0.00	0.00	0.00	0.00	0.00	0.00	0.00	0.00	0.00	0.00	0.00	0.00		

C Range: 0 - 360DEG
 C Interval: 10.0DEG
 Test Speed: HIGH
 Temperature:25.3DEG
 Operators:DAMIN
 Test Date:2016-10-25

γ Range: 0 - 180DEG
 γ Interval: 1.0DEG
 Test System:EVERFINE GO-2000B_V1 SYSTEM V2.0.351
 Humidity:65.0%
 Test Distance:4.950m [K=1.0000]
 Remarks: