

IN-PROFILE DIMMER

TOUCH - ALUMINIUM

LL-CON-PR-TD01

This dimmer module is designed to be mounted within the aluminium profile.



Operation is controlled by touching any part of the aluminium profile rather than the PC cover/lens of the profile.

On/Off	<i>Quick touch</i>
Dim Up/Down	<i>Touch and hold (2 sec)</i>

This module will memorise the level of last brightness, even when power is disconnected.

Electrical Data

Input Voltage	12.0 ~ 24.0 VDC
Input Current	3A
Output Voltage	12.0 ~ 24.0 VDC
Output Load	36W @ 12V / 72W @ 24V

Operation

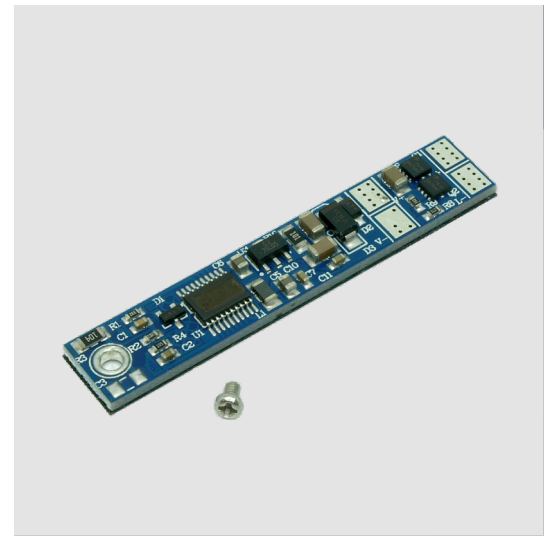
On / Off	Quick touch on Quick touch off
Dim	Touch for 2 sec (6~100%)
Memory Brightness Level	Yes, even with loss of power

Construction / Protection Data

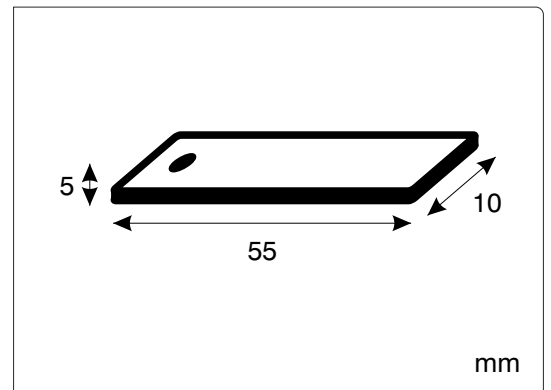
Substrate	PCB
Mounting	M2 3mm Screw
IP rating	IP20
Operating temperature	-20 ~ +60 C°
Storage temperature	-20 ~ +50 C°

Dimensions

Length	55 mm
Width	10 mm
Height	5 mm



Dimensions



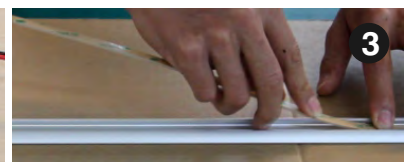
Installation Procedure



1 Drill a 1.5mm hole in the aluminium profile and screw the profile in place



2 Solder the input power wires to the input terminals of the module



3 Attach an insulating layer of thick double sided foam to the profile



4 Lay the LED strip light down on to the insulating double sided tape



5 Solder the LED strip to the output terminals of the module



6 Insert the PC cover and end caps



7 Touch the aluminium profile to test functionality